



## Alacross Road, W5

£3,200 Per calendar month

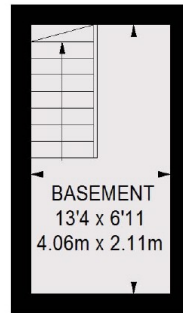
A well maintained and spacious semi-detached family home. With three reception rooms, cellar, four bedrooms, period features throughout and a good-size garden.

Close to Walpole Park, Lammas Park, and Ealing Common, the property is ideally positioned for access to both South Ealing and Ealing Broadway tube stations.

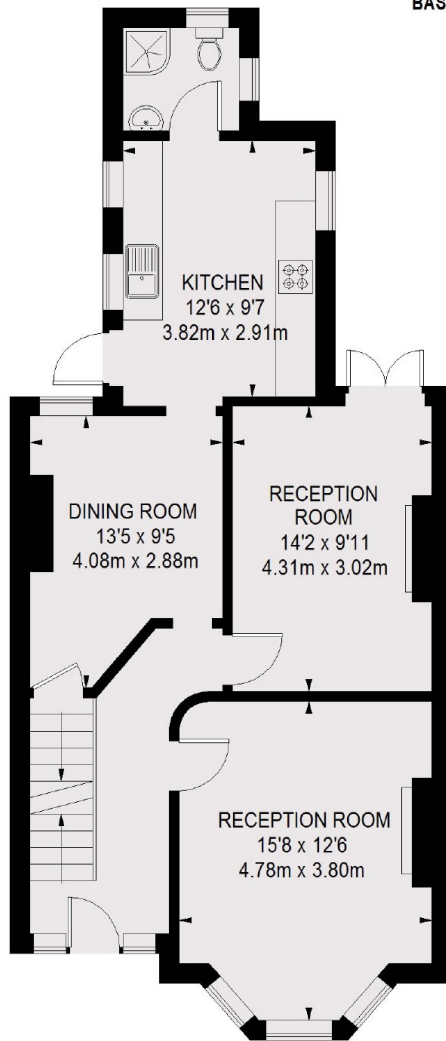
### Features

- Four Bedrooms
- Three Reception Rooms
- Period Features
- Enclosed Rear Garden
- Close To South Ealing Tube
- High Ceilings

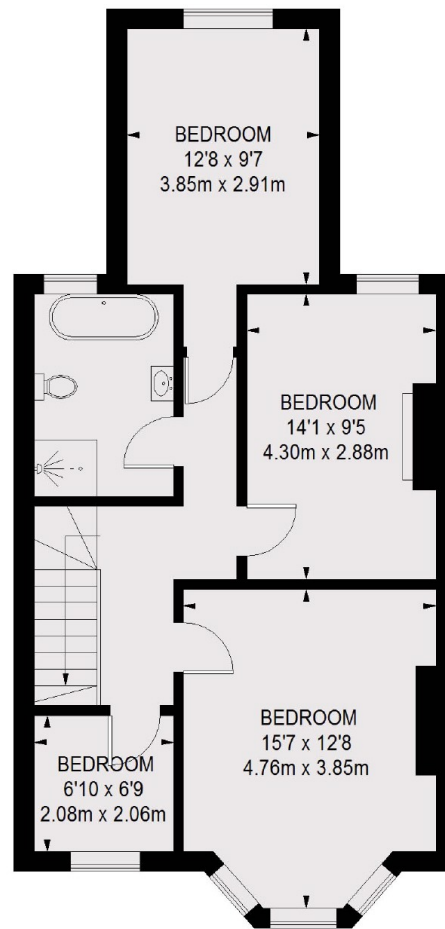
# Alacross Road, London, W5



BASEMENT



GROUND FLOOR



FIRST FLOOR

TOTAL APPROX. FLOOR AREA  
1496 SQ. FT. (138.99 SQ. M.)