



Cox Meadow Road, Leicester Forest East Leicester LE3 3QD

welcome to

Cox Meadow Road, Leicester Forest East Leicester

Modern two-bedroom semi-detached home in excellent condition with no onward chain. Located in popular Leicester Forest East, offering off-street parking and a larger-than-average garden, plus easy access to local amenities and motorway links.

Entrance Hall

Door to the front.

W C

Double glazed window to the side, WC, hand wash basin and tiled floor.

Lounge

French doors to the rear and integrated storage.

Kitchen

Fitted kitchen comprising of wall and base units with work surfaces over, sink drainer unit, tiled floor, integrated oven, hob, fridge freezer and dishwasher. Double glazed window to the front.

First Floor Landing

Stairs rising from the ground floor.

Bedroom One

Two double glazed windows to the rear.

Bedroom Two

Two double glazed windows to the front and two storage cupboards.

Bathroom

Bath with shower over, WC, hand wash basin and fully tiled.

Front & Rear Of Property

To the front of the property is a garden laid to lawn with a driveway to the side providing off-street parking and gated access to the rear garden. To the rear of the property is a larger than average garden laid to lawn with paved patio area.





view this property online williamhbrown.co.uk/Property/LHS115925



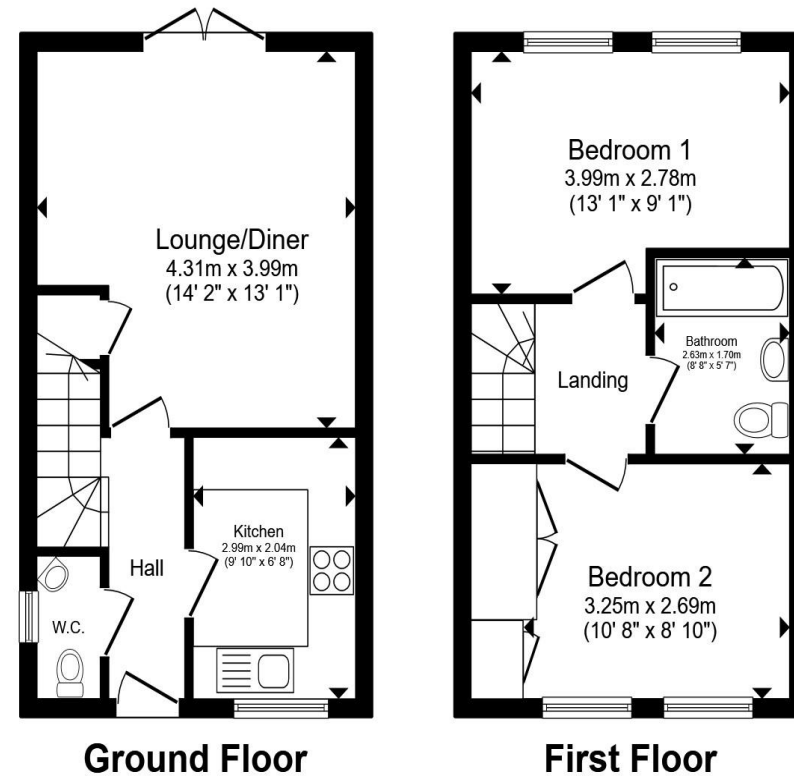
welcome to

Cox Meadow Road, Leicester Forest East Leicester

- Semi-detached
- Two bedrooms
- Off-street parking
- Larger-than-average rear garden
- No onward chain

Tenure: Freehold EPC Rating: B
Council Tax Band: B

offers over
£250,000



Total floor area 59.2 m² (637 sq.ft.) approx

This floor plan is for illustrative purposes only. It is not drawn to scale. Any measurements, floor areas (including any total floor area), openings and orientation are approximate. No details are guaranteed, they cannot be relied upon for any purpose and they do not form part of any agreement. No liability is taken for any error, omission or misstatement. A party must rely upon its own inspection(s). Powered by www.propertybox.io



view this property online williamhbrown.co.uk/Property/LHS115925



Property Ref:
LHS115925 - 0002

1. MONEY LAUNDERING REGULATIONS Intending purchasers will be asked to produce identification documentation at a later stage and we would ask for your co-operation in order that there is no delay in agreeing the sale. 2. These particulars do not constitute part or all of an offer or contract. 3. The measurements indicated are supplied for guidance only and as such must be considered incorrect. Potential buyers are advised to recheck measurements before committing to any expense. 4. We have not tested any apparatus, equipment, fixtures or services and it is in the buyers interest to check the working condition of any appliances. 5. Where an EPC, or a Home Report (Scotland only) is held for this property, it is available for inspection at the branch by appointment. If you require a printed version of a Home Report, you will need to pay a reasonable production charge reflecting printing and other costs. 6. We are not able to offer an opinion either written or verbal on the content of these reports and this must be obtained from your legal representative. 7. Whilst we take care in preparing these reports, a buyer should ensure that his/her legal representative confirms as soon as possible all matters relating to title including the extent and boundaries of the property and other important matters before exchange of contracts.

William H Brown is a trading name of Sequence (UK) Limited which is registered in England and Wales under company number 4268443, Registered Office is Cumbria House, 16-20 Hockliffe Street, Leighton Buzzard, Bedfordshire, LU7 1GN. VAT Registration Number is 500 2481 05.


william h brown



0116 251 4131



Leicester@williamhbrown.co.uk



16-18 Halford Street, LEICESTER, Leicestershire,
LE1 1JB



williamhbrown.co.uk