



BELGRAVE ROAD, SW1V

£692 per week

Two double bedrooms

Two bathrooms

Storage

Natural light

Spacious

Energy rating: c



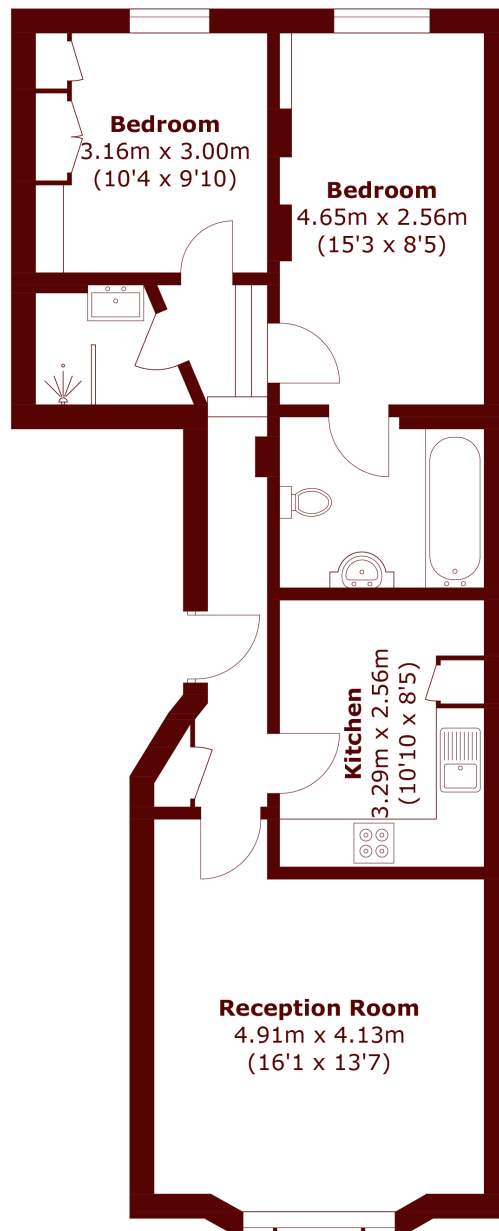
ABOUT THE PROPERTY

A well-proportioned two-bedroom, two-bathroom apartment ideally positioned on Belgrave Road, offering generous living space and excellent storage throughout.

The property comprises a bright and spacious reception room with wooden flooring, two well-sized double bedrooms also featuring wooden floors, and ample built-in storage. A separate kitchen provides practical and functional space for everyday living, while two bathrooms offer added convenience and flexibility. Set within easy reach of Pimlico and Victoria, the property is perfectly located for access to transport links, local amenities, and the green open spaces of central London. Ideal for professional sharers or a couple seeking space



STEP INSIDE BELGRAVE ROAD



Total area (approx.): 64.7 sq. m (696.4 sq. ft)

Pimlico & Westminster
020 7828 8100

Energy Rating: C We aim to make our particulars both accurate and reliable. However, they are not guaranteed; nor do they form part of an offer or contract. If you require clarification on any points then please contact us, especially if you're traveling some distance to view. Please note that appliances and heating systems have not been tested and therefore no warranties can be given as to their good working order

**MARSH &
PARSONS**