



PONT STREET
Knightsbridge SW1X



EXCEPTIONAL FINISH THROUGHOUT

Located on one of Knightsbridge's most distinguished addresses, this beautifully presented two-bedroom apartment combines period character with contemporary interior design.



2



2



1

EPC

D

Local Authority: Royal Borough of Kensington and Chelsea

Council Tax band: H

Tenure: Share of Freehold, 995 years remaining

Ground rent: £250 per annum, next review 2076

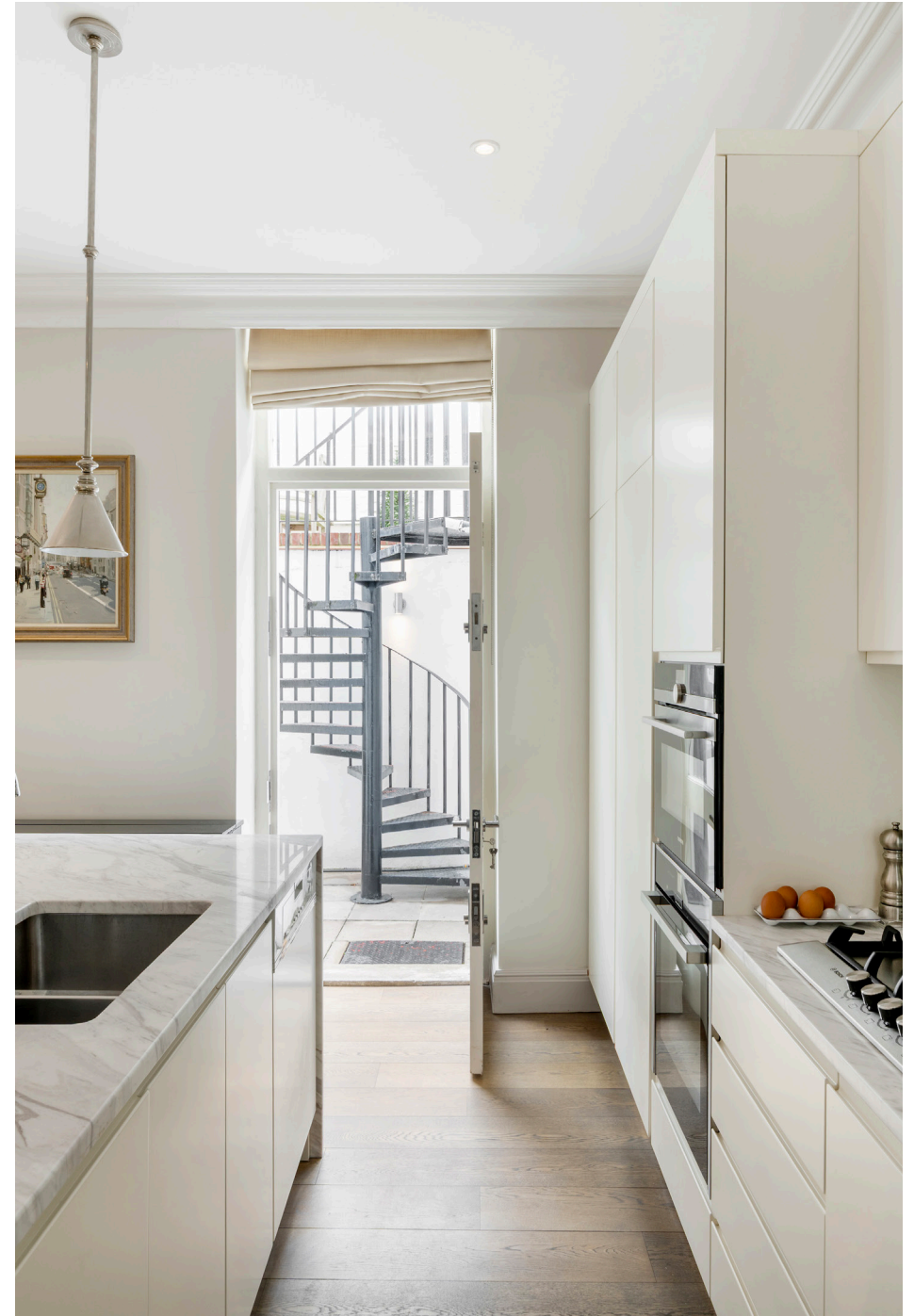
Service charge: £8,406 per annum, next review 2026

Guide Price: £2,325,000



Finished to an exceptional standard throughout, the property offers generous proportions, excellent ceiling heights, and a thoughtful layout ideal for modern living.

On the ground floor, you are welcomed by an impressive principal bedroom suite, featuring elegant fitted wardrobes and a beautifully appointed en-suite bathroom. The room has been thoughtfully designed to balance comfort and refinement, with exceptional 3.75m ceiling heights adding to its sense of space and light. The second bedroom suite continues the same high standard of design, complete with a walk-in wardrobe and a luxurious en suite bathroom.





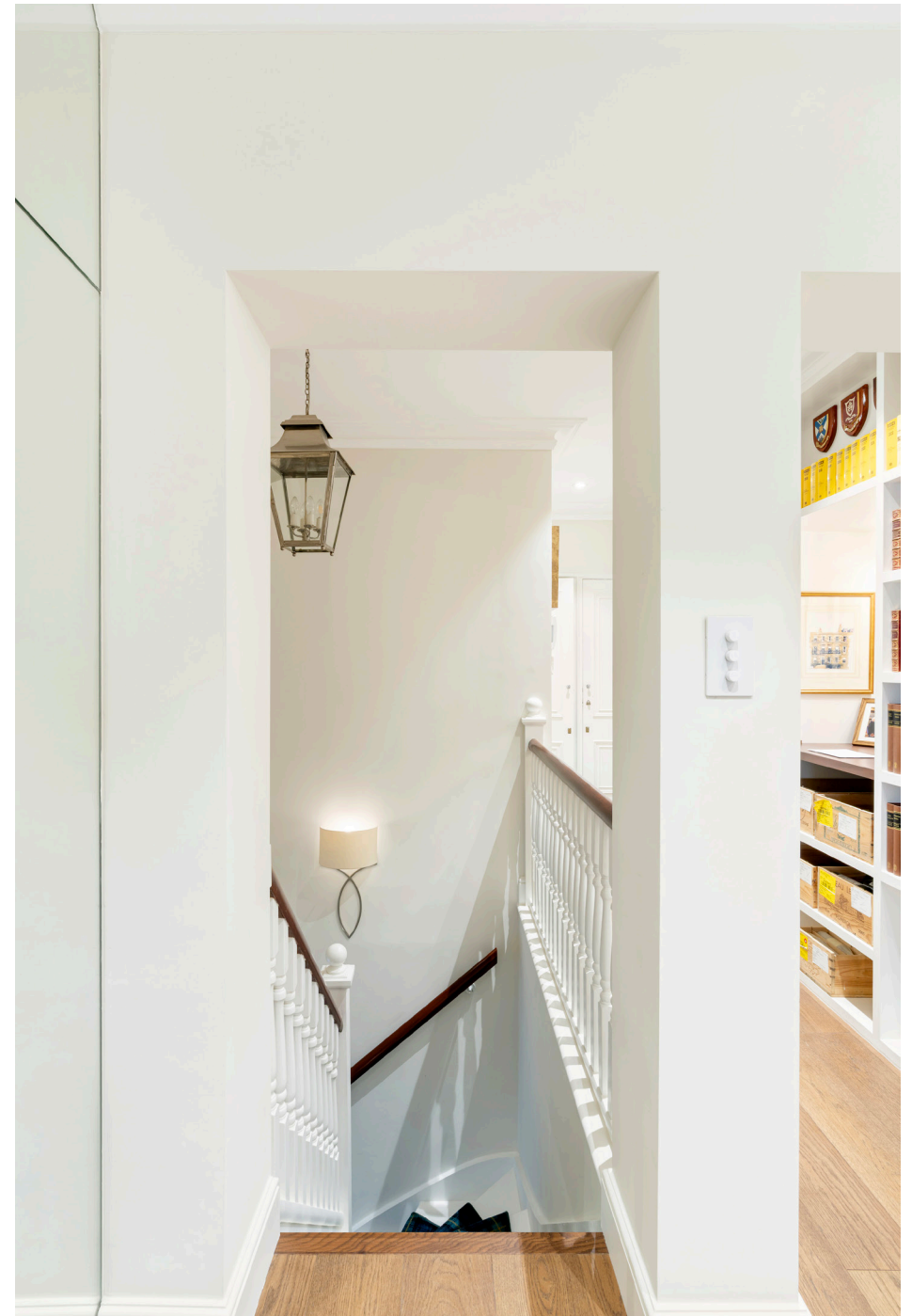


The lower ground floor features an elegant open-plan kitchen, dining, and living area, designed with both style and functionality in mind. High-quality finishes, bespoke joinery, and integrated appliances create a sophisticated yet comfortable living environment. With impressive ceiling heights of approximately 2.75 metres, the space feels bright and expansive, enhanced by large windows that bring in natural light.

To the rear of the property, a two-tiered private terrace offers a secluded and tranquil outdoor space perfect for dining, relaxing, or entertaining. Residents also benefit from the services of a porter, ensuring convenience and security.



Located in the heart of Knightsbridge, Pont Street is one of London's most coveted addresses, just 0.3 miles from Harrods and 0.1 miles from the internationally renowned boutiques of Sloane Street. The apartment is perfectly positioned to enjoy the best of London living while offering a haven of sophistication and comfort.

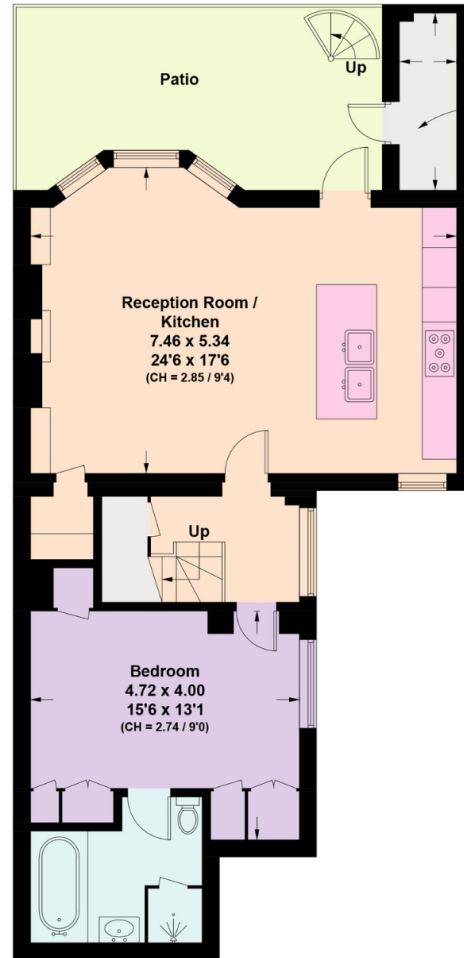




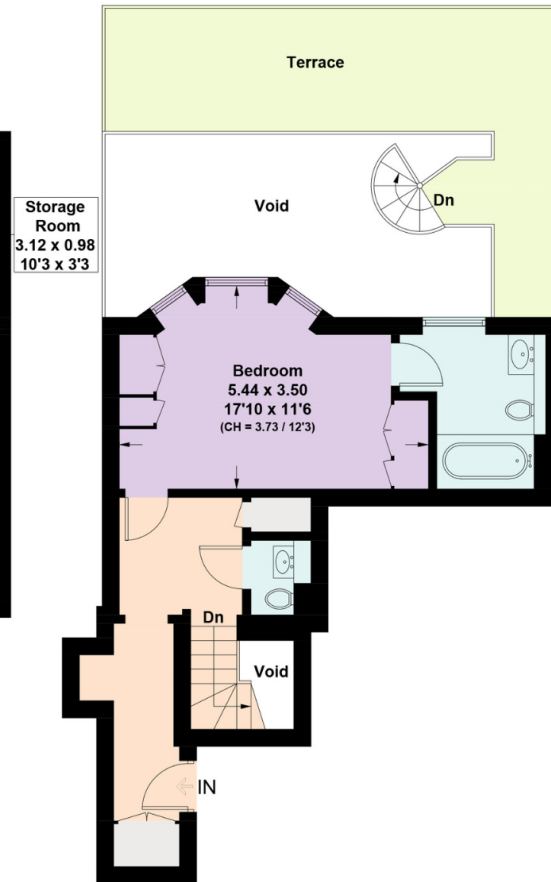




[] = Reduced head height below 1.5m



Lower Ground Floor



Ground Floor

Approximate Gross Internal Area = 114.2 sq m / 1,229 sq ft

This plan is for layout guidance only. Not drawn to scale unless stated. Windows and door openings are approximate. Whilst every care is taken in the preparation of this plan, please check all dimensions, shapes and compass bearings before making any decisions reliant upon them. (ID767266)

We would be delighted
to tell you more.

Daniel Sugarman
020 7861 1224
daniel.sugarman@knightfrank.com

Knight Frank Knightsbridge
52-54 Sloane Avenue
SW3 3DD

knightfrank.co.uk

Your partners in property

1. Particulars: These particulars are not an offer or contract, nor part of one. You should not rely on statements given by Knight Frank in the particulars, by word of mouth or in writing ("information") as being factually accurate about the property, its condition or its value. Neither Knight Frank nor any joint agent has any authority to make any representations about the property, and accordingly any information given is entirely without responsibility on the part of Knight Frank. 2. Material Information: Please note that the material information is provided to Knight Frank by third parties and is provided here as a guide only. While Knight Frank has taken steps to verify this information, we advise you to confirm the details of any such material information prior to any offer being submitted. If we are informed of changes to this information by the seller or another third party, we will use reasonable endeavours to update this as soon as practical. 3. Photos, Videos etc: The photographs, property videos and virtual viewings etc. show only certain parts of the property as they appeared at the time they were taken. Areas, measurements and distances given are approximate only. 4. Regulations etc: Any reference to alterations to, or use of, any part of the property does not mean that any necessary planning, building regulations or other consent has been obtained. A buyer must find out by inspection or in other ways that these matters have been properly dealt with and that all information is correct. 5. Fixtures and fittings: A list of the fitted carpets, curtains, light fittings and other items fixed to the property which are included in the sale (or may be available by separate negotiation) will be provided by the Seller's Solicitors. 6. VAT: The VAT position relating to the property may change without notice. 7. To find out how we process Personal Data, please refer to our Group Privacy Statement and other notices at <https://www.knightfrank.com/legals/privacy-statement>.

Particulars dated May 2024. Photographs and videos dated March 2024. All information is correct at the time of going to print. Knight Frank is the trading name of Knight Frank LLP. Knight Frank LLP is a limited liability partnership registered in England and Wales with registered number OC305934. Our registered office is at 55 Baker Street, London W1U 8AN. We use the term 'partner' to refer to a member of Knight Frank LLP, or an employee or consultant. A list of members names of Knight Frank LLP may be inspected at our registered office. If you do not want us to contact you further about our services then please contact us by either calling 020 3544 0692, email to marketing.help@knightfrank.com or post to our UK Residential Marketing Manager at our registered office (above) providing your name and address.