



Scan me to get a **detailed property report & valuation** on your house!



complete  
ESTATE AGENTS

**Woodside Park, Wood Street**  
**Offers Over £107,500**

**complete** ● ● ●  
ESTATE AGENTS

# Woodside Park, Wood Street, Rugby

Nestled in the heart of Rugby, this charming one-bedroom apartment on Woodside Park offers a delightful blend of comfort and convenience. As a purpose-built residence, it boasts a well-designed layout that maximises space and functionality. The apartment features a welcoming reception room, perfect for relaxation or entertaining guests, and a fully fitted kitchen that caters to all your culinary needs.

One of the standout features of this property is the allocated parking, a rare find in such a central location. This added convenience makes it easy to come and go as you please, whether you're commuting or enjoying the local amenities.

Situated close to Rugby's vibrant town centre, you will have easy access to a variety of shops, cafes, and restaurants, as well as excellent transport links. This apartment is ideal for first-time buyers, professionals, or those seeking a low-maintenance lifestyle in a thriving community.

In summary, this one-bedroom apartment offers an excellent opportunity for those looking to embrace modern living in a prime location. Don't miss your chance to make this lovely property your new home.

## Communal Hallway

## Entrance Hall

Doors to

## Open Plan Lounge / Kitchen

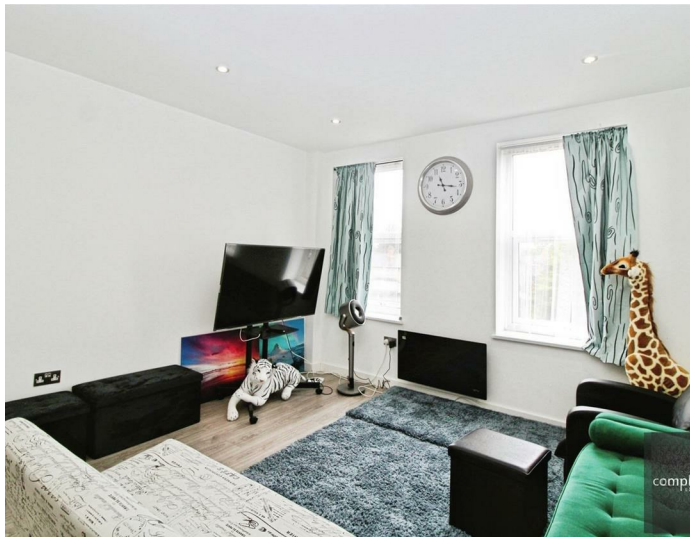
Wood effect flooring. Modern hi gloss white kitchen units with integrated fan assisted oven and electric hob and extractor. Built in fridge/freezer. Built in washing machine. Eye level units. Electric panel radiator. Window.

## Bedroom

Electric panel radiator. Window

## Shower Room

Glazed shower enclosure with fitted shower. Low flush WC. Wash hand basin.



## Parking

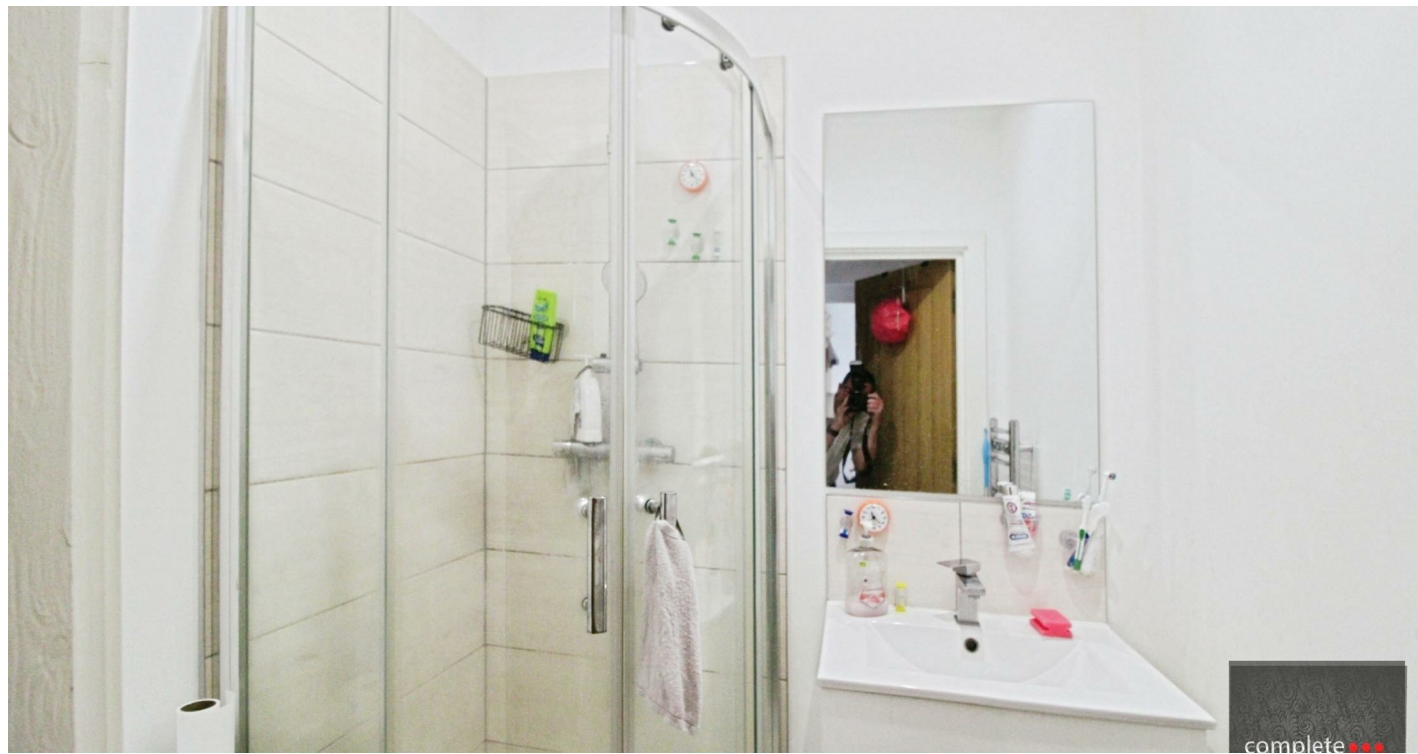
Allocated parking space

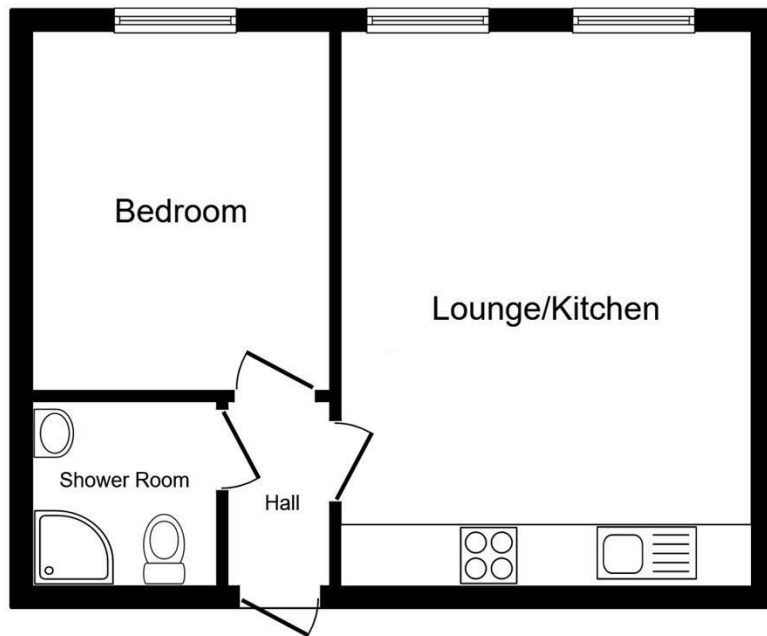
## About Rugby

Rugby is a market town in Warwickshire, England, on the River Avon. The town has a population of 70,628 (2011 census[1]) making it the second largest town in the county. The enclosing Borough of Rugby has a population of 100,500 (2011 census). Rugby is 13 miles (21 km) east of Coventry, on the eastern edge of Warwickshire, near the borders with Northamptonshire and Leicestershire. The town is credited with being the birthplace of rugby football.

## Rugby Borough Council

Rugby Borough Council,  
Town Hall,  
Evreux Way,  
Rugby  
CV21 2RR

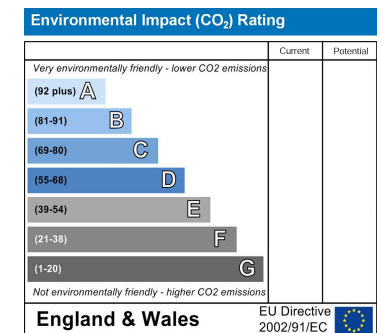
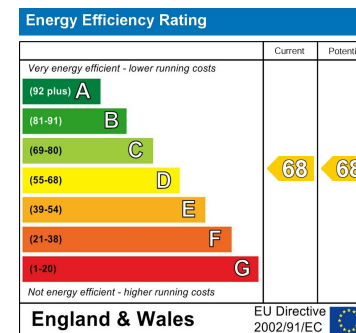




**Floor Plan**  
Floor area 37.8 sq.m. (407 sq.ft.)

Total floor area: 37.8 sq.m. (407 sq.ft.)

This floor plan is for illustrative purposes only. It is not drawn to scale. Any measurements, floor areas (including any total floor area), openings and orientations are approximate. No details are guaranteed, they cannot be relied upon for any purpose and do not form any part of any agreement. No liability is taken for any error, omission or misstatement. A party must rely upon its own inspection(s). Powered by www.Propertybox.io



Misrepresentation Act 1967 - These particulars are believed to be correct but their accuracy is not guaranteed nor do they form part of any contract.

18 Church Street, Rugby, Warwickshire, CV21 3PU  
T: 01788 550 800  
sales@complete247.co.uk  
www.complete247.co.uk

**complete** ●●●  
ESTATE AGENTS