



Bermondsey Street, SE1

£1,000,000

A very rarely available Victorian Conversion with a very large private roof terrace, high ceilings, original fireplaces and sash windows. Featuring a spacious kitchen-diner, a generous living room, two double bedrooms and a three piece bathroom. Sold chain free.

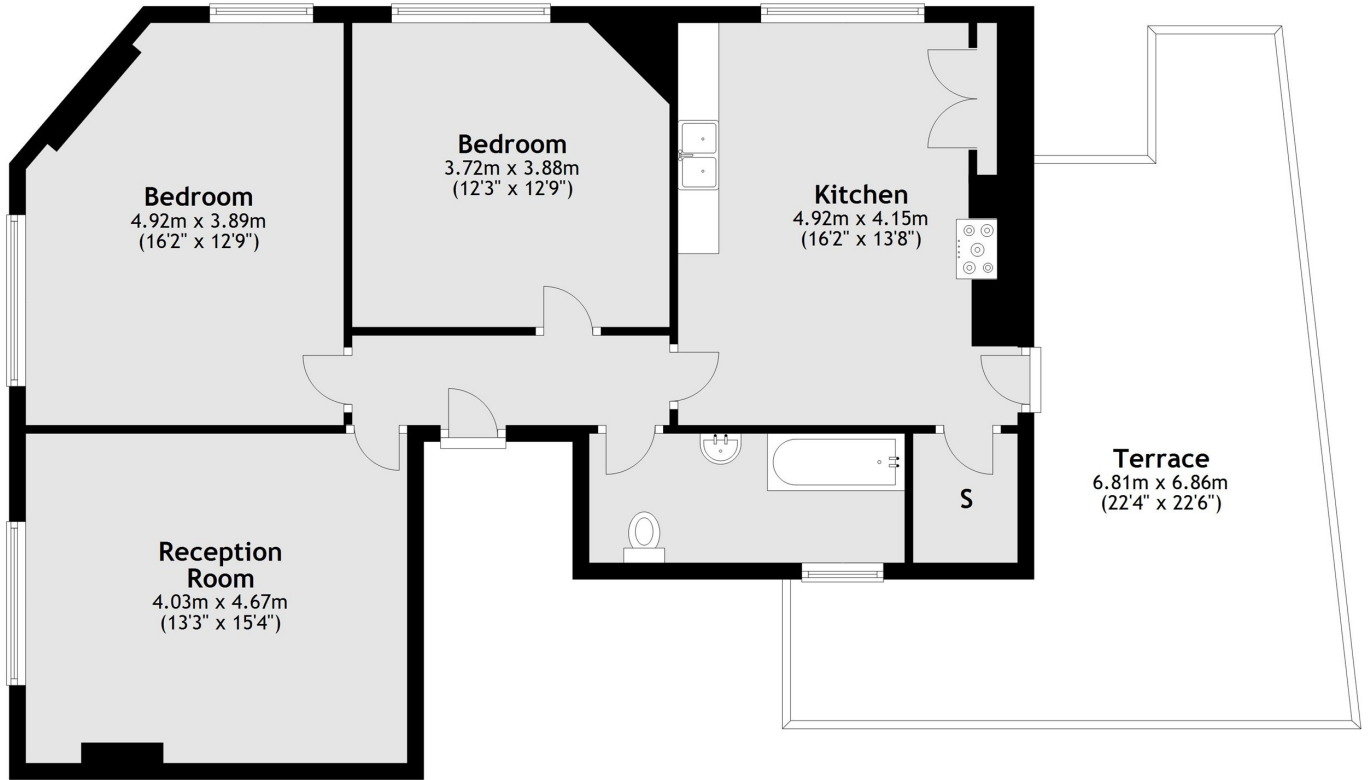
Enviably located on the vibrant Bermondsey Street, this property offers the very best of SE1. Surrounded by independent cafés and acclaimed restaurants, galleries and theatres. Moments from the South Bank, Borough Market and Shad Thames.

Features

- Long Lease - 190 Years
- Large Private Roof Terrace
- Victorian Conversion
- Spacious Kitchen-Diner
- Generous Living Room
- Chain Free Sale

Bermondsey Street, London, SE1

First Floor



Main area: Approx. 86.5 sq. metres (930.6 sq. feet)
Plus roof terrace, approx. 32.2 sq. metres (346.9 sq. feet)