



**A LOVELY TWO BEDROOM, TWO BATHROOM GROUND FLOOR APARTMENT**

Myrtle Side Close, Northwood, Middlesex, HA6 2XH



Myrtleside Close, Northwood, Middlesex, HA6 2XH

**GROUND FLOOR • TWO BEDROOMS • TWO BATHROOMS • LIVING/DINING ROOM • KITCHEN • COMMUNAL GARDENS • ON STREET PARKING • HEART OF NORTHWOOD**

### Description

Nestled within the sought-after setting of Myrtleside Close in Northwood, this well-presented two-bedroom, two-bathroom ground floor apartment offers a superb blend of style, comfort, and convenience.

Generously proportioned throughout, the property features a bright and spacious living/dining area with large windows that flood the space with natural light, complementing the tasteful modern décor. The kitchen is well-appointed with sleek cabinetry and integrated appliances. Both double bedrooms are generously sized, with the principal bedroom benefiting from a stylish ensuite shower room. A further modern family bathroom serves the second bedroom.

Additional features include ample storage, gas central heating, double glazing, and well-maintained communal grounds. The property is presented to the market with no onward chain.





Northwood provides a range of shopping facilities including Waitrose supermarket, a variety of restaurants and other amenities with the Metropolitan Line station providing access to Baker Street and the City. There is a plethora of state and private schooling together with a wide choice of recreational facilities, which include golf courses and fitness centres. The M1, M40 and M25 motorways are also accessible.

NB this property is situated within the proximity of the ULEZ, if your vehicle does not comply charges may apply.

\*Please note the photographs displayed are prior to current tenancy\*

### **Additional Information**

Tenure: Leasehold

Lease Length: 999 years from 24 June 2013

Service Charge/Ground Rent: £4,063.68

Local Authority: London Borough of Hillingdon

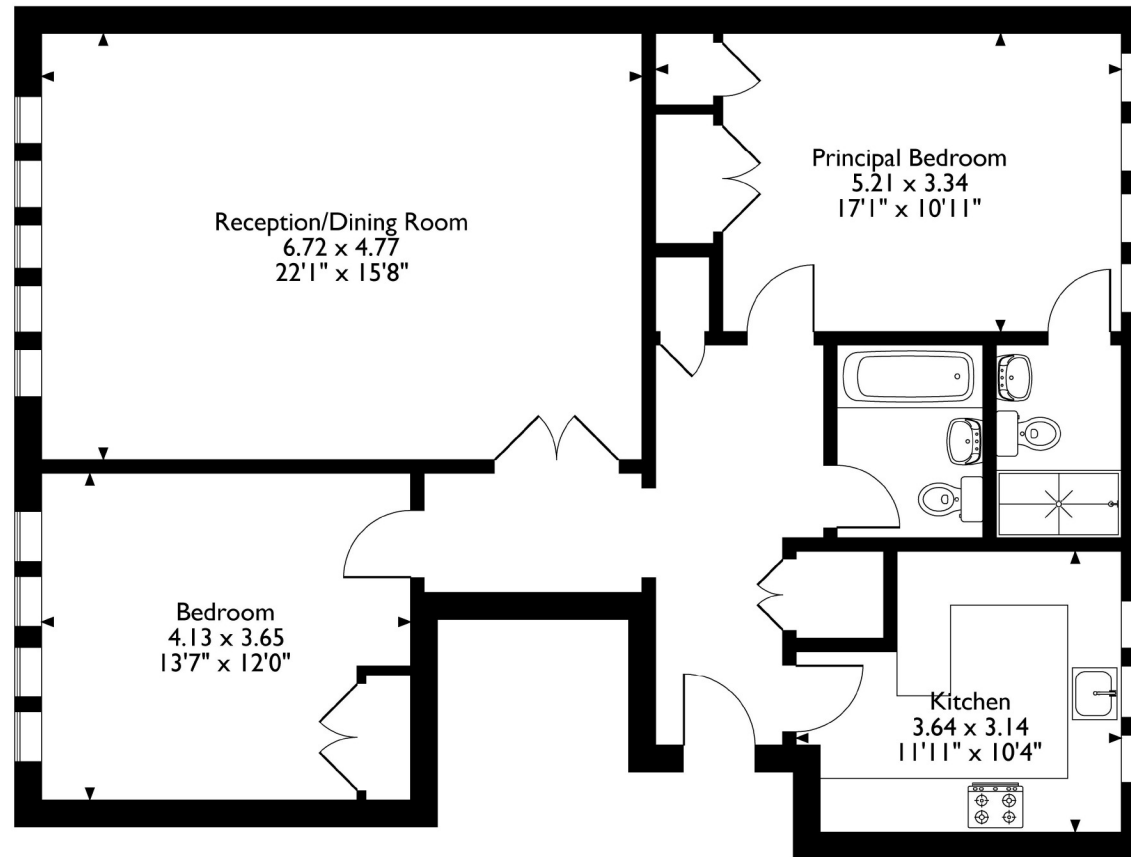
Council Tax Band: F

Energy Efficiency Rating: B

For additional information, please refer to [www.robsonswb.com](http://www.robsonswb.com) or call us on: 01923 835355.



Myrtleside Close, Northwood, HA6 2XH  
Approximate Gross Internal Area  
97 Sq M/1044 Sq Ft



**Ground Floor**

Please note that the location of doors, windows and other items are approximate and this floorplan is to be used for illustrative purposes only. Unauthorized reproduction is prohibited.

**ROBSONS**

7 Clive Parade, Northwood, HA6 2QF  
Tel: 01923 835355 Email: northwood@robsonswb.com

[www.robsonswb.com](http://www.robsonswb.com)

SCAN TO VISIT



OUR WEBSITE

Important notice: Robsons, their clients and any joint agents give notice that 1: They are not authorised to make or give any representations or warranties in relation to the property either here or elsewhere, either on their own behalf or on behalf of their client or otherwise. They assume no responsibility for any statement that may be made in these particulars. These particulars do not form part of any offer or contract and must not be relied upon as statements or representations of fact. 2: Any areas, measurements or distances are approximate. Plot sizes and dimensions are taken from Promap and are approximate. The text, photographs and plans are for guidance only and are not necessarily comprehensive. It should not be assumed that the property has all necessary planning, building regulation or other consents and Robsons have not tested any services, equipment or facilities. Purchasers must satisfy themselves by inspection or otherwise.