




Hill Road, Kirkby-in-Cleveland, Middlesbrough, TS9 7AN

Offers Over £850,000

 6  3  4



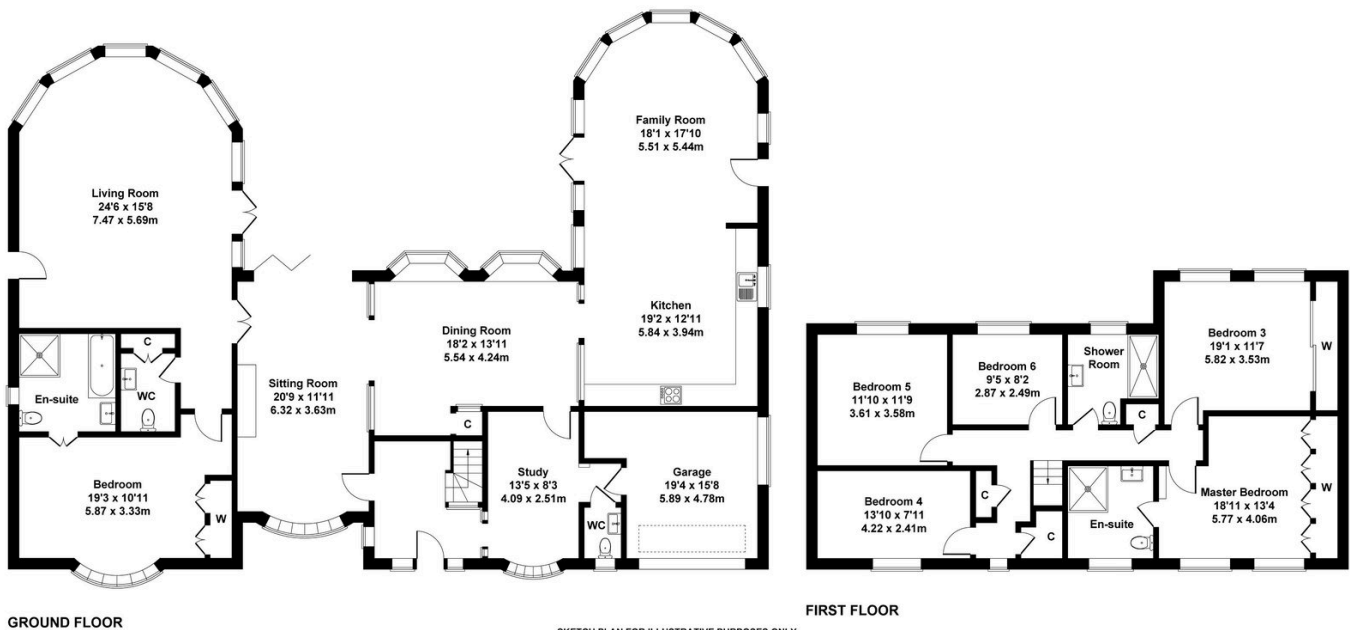
The Yorkshire Property Agency is delighted to introduce a rare opportunity to acquire a luxurious six-bedroom country home in one of North Yorkshire's most sought-after villages. Combining the charm of rural surroundings with contemporary living and finished to an exceptional specification, it is a home that offers elegance, space, and serenity in equal measure.

Key Features

- Lucurious six-bedroom family home
- Offering elegance, space, and serenity in equal measure
- Nestled at the foot of the stunning Cleveland Hills
- Stunning plot with substantial mature gardens
- Four reception-rooms
- Off-street parking for multiple cars
- Ideal for entertainment or family living
- Finished to an exceptional specification
- Chain-free sale
- Council tax band G

Rudland House, Kirby In Cleveland

Approximate Gross Internal Area
3369 sq ft - 313 sq m



GROUND FLOOR

FIRST FLOOR

SKETCH PLAN FOR ILLUSTRATIVE PURPOSES ONLY
All measurements walls, doors, windows, fittings and appliances, their sizes and locations, are approximate only. They cannot be regarded as being a representation by the seller, nor their agent.
Produced by Potterplans Ltd. 2025