

Symonds
& Sampson

Apple Tree House

17 East Street, Chickerell, Weymouth, Dorset

Apple Tree

17 East Street

Chickerell

Weymouth

Dorset DT3 4DS

Built circa 1780, this charming three-storey, five-bedroom Georgian family home is nestled in the heart of old Chickerell.



- Distinctive period home
- Well positioned in the heart of old Chickerell
 - Accommodation over three storeys
 - Spacious reception room
 - Five bedrooms
 - Southerly aspect garden
 - Enclosed courtyard
 - Off road parking
 - Close to amenities

Guide Price **£450,000**

Freehold

Poundbury Sales
01305 251154

poundbury@symondsandsampson.co.uk



THE PROPERTY

Situated in the heart of Chickerell, this distinctive five-bedroom period home is rich in character and charm. Ideally located near the village shop, Church, traditional pubs, and convenient transport links to Weymouth, it also offers the added benefit of off-road parking. The breath-taking World Heritage Jurassic Coast is just a short distance away.

ACCOMMODATION

Upon entering through the porch, the main door opens into a spacious, open-plan sitting and dining room that extends the full width of the property. South-facing wooden sash double-glazed windows bathe the room in natural light, while a charming period fireplace enhances its character.

At the heart of the home, the generously sized country-style kitchen/breakfast room provides ample space for a table. A west-facing double-glazed window offer a pleasant view of the courtyard. A rear vestibule houses the boiler and a door into a WC. There is also direct access to the courtyard.

On the first floor, a central landing leads to three bedrooms and the family bathroom, along with built-in storage for added convenience. The principal bedroom is a double room with generous storage and the added benefit of a built-in shower and wash basin. A second double bedroom benefits from a built in wardrobe and a single complete this level.

The second floor features two additional double bedrooms, offering versatility and extra living space.

OUTSIDE

To the front of the house is a south-facing cottage garden, complete with lawn, mature shrubs, two apple trees, two timber garden sheds and a small vegetable plot. There is an gated area for off-road parking. To the rear, a westerly-facing courtyard provides a private outdoor retreat.

DIRECTIONS

What3words///dynamics.savers.sculpting

SITUATION

Chickerell is a highly sought-after location on the outskirts of the vibrant coastal town of Weymouth, offering easy access to the stunning World Heritage Jurassic Coastline. This includes the renowned Chesil Beach, which stretches along the coast to Lyme Regis.

Popular with families and young professionals, Chickerell boasts a thriving community and an excellent range of local amenities. These include both primary and secondary schools, a Morrisons Local with a Post Office, a Village Hall, a Library, a Church, a Chemist, two traditional pubs, a restaurant, and a leisure centre featuring a gymnasium and 3G sports pitches.

The nearby Jurassic Coast offers a network of scenic footpaths, perfect for coastal walks with breathtaking views across the Fleet Lagoon. Just three miles away, Weymouth town centre is easily accessible by cycle lanes, local bus routes, or car, providing an even wider selection of shops, restaurants, and cafés, as well as a sandy beach and a picturesque inner harbour.

SERVICES

Mains electric, water and drainage.
Gas fired central heating system.

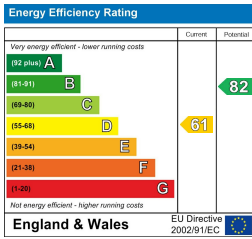
Broadband- Ultrafast broadband is available with 1000Mbps download speeds
Mobile phone coverage- Network coverage is limited indoors and likely outdoors
(Information from <https://www.ofcom.org.uk>)

Local Authority
Dorset Council Tel: 01305 251010
Council Tax Band E

MATERIAL INFORMATION

The property is found within a conservation area
The woodburner in the sitting room has been decommissioned.
There is a right of access to the rear of the property via the side of the Methodist Church.

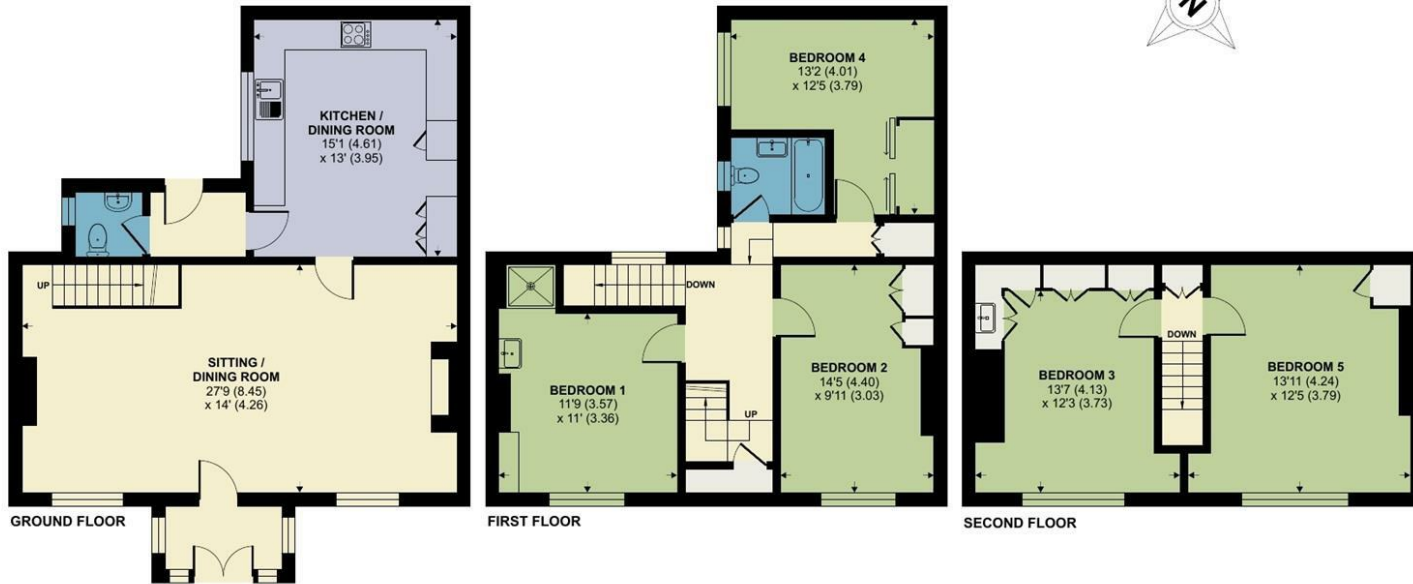




East Street, Chickerell, Weymouth

Approximate Area = 1702 sq ft / 158.1 sq m

For identification only - Not to scale



Floor plan produced in accordance with RICS Property Measurement 2nd Edition, Incorporating International Property Measurement Standards (IPMS2 Residential). © nichecom 2025. Produced for Symonds & Sampson. REF: 1268368



Poundbury/JS/28.4.26Rev



01305 251154

poundbury@symondsandsampson.co.uk
Symonds & Sampson LLP
Arch Point House, 7 Queen Mother Square,
Poundbury, Dorset DT1 3BY



Important Notice: Symonds & Sampson LLP and their clients give notice that they have no authority to make or give any representations or warranties regarding the property. These particulars do not form part of any offer or contract and must not be relied upon as statements of fact. Some descriptions and images may have been AI-assisted; while reviewed for accuracy, interested parties should verify key details through inspection or by contacting our agents. All measurements and distances are approximate. Text, photographs, and plans are for guidance only and may not be comprehensive. It should not be assumed that the property has all necessary planning or regulatory consents, and no services, equipment, or facilities have been tested. No investigations have been made into pollution or contamination; purchasers must make their own enquiries. The property is sold subject to all existing wayleaves, easements, and rights of way (public or private), whether mentioned or not. Vendors are not required to define such rights.

SALES | LETTINGS | AUCTIONS | FARMS & LAND | COMMERCIAL | NEW HOMES | PLANNING & DEVELOPMENT