



Jubilee Heights

Shoot Up Hill, Kilburn NW2

Asking Price £440,000

A two double bedroom flat comprising 1,012 square feet situated in this luxury purpose built block.

Jubilee Heights is located just 150 yards from the Jubilee Line and offers numerous benefits to its residents including a gymnasium, swimming pool & sauna, secure underground parking (for one car), manicured gardens, a communal roof terrace and a 24 hour concierge. Sole agent.

CHESTERTONS



Jubilee Heights

Shoot Up Hill, Kilburn NW2

- Two bedrooms
- Two bathrooms
- 1,012 square feet
- Communal roof terrace
- Underground parking for one car
- Communal swimming pool
- 150 yards to the Jubilee Line



Tenure: Share of Freehold and a lease with 970 years remaining.

Service Charge: £8,460 per annum (£705 per month including water rates.)

Ground Rent: £250 per annum

Local Authority: Barnet

Council Tax Band: F

Score	Energy rating	Current	Potential
92+	A		
81-91	B	81 B	83 B
69-80	C		
55-68	D		
39-54	E		
21-38	F		
1-20	G		

Chestertons Hampstead Sales

55-56 Hampstead High Street

Hampstead

NW3 1QH

hampstead@chestertons.co.uk

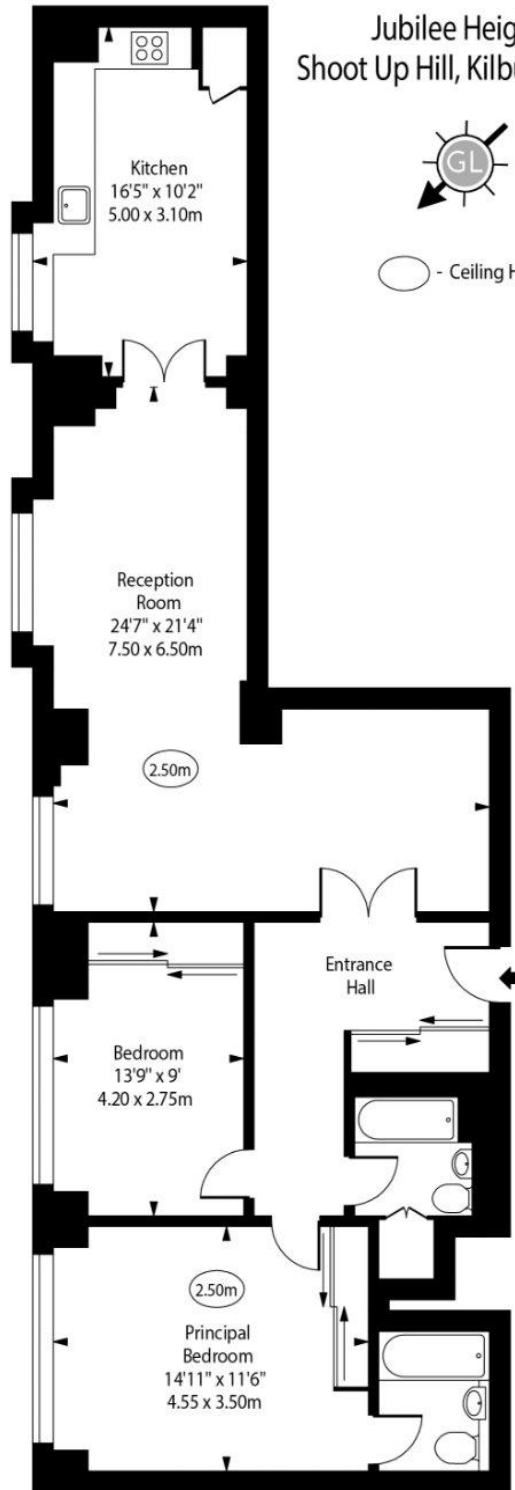
020 7794 3311

chestertons.co.uk

Jubilee Heights,
Shoot Up Hill, Kilburn, NW2



○ - Ceiling Height



First Floor

Approx Gross Internal Area 1012 Sq Ft - 94.01 Sq M

Every attempt has been made to ensure the accuracy of the floor plan shown. However, all measurements, fixtures, fittings, and data shown are approximate interpretations and for illustrative purposes only.

Measured according to the RICS IPMS 2. Not To Scale.

www.goldlens.co.uk
Prepared for Chestertons
Ref. No. 028536WI

