



SCAN HERE
FOR
PROPERTY
DETAILS



Jersey Road, Isleworth

£1,400,000 Freehold

OAKHILL

Situated on the sought after Jersey Road with viewings directly overlooking Osterley Park, this beautifully pretended five double bedroom family home is ideally located for access to Syon Lane train station, Osterley tube station and a range of excellent local schools including the popular Nishkam School. The property has been extended on the ground and now offers over 2,100 sq ft of living space, with the ground floor accommodation offering a welcoming hallway, spacious front reception room, a bedroom, bathroom, a stunning open plan modern kitchen/dining area with high end fittings and bi-folding doors leafing out to the rear garden and a utility room. The first floor offers a large master bedroom with an en-suite shower room, second double bedroom with en-suite shower room, two further double bedrooms and a luxury family bathroom with separate shower. Externally the property offers driveway parking for multiple cars and a large south facing rear garden with side access and a wooden storage shed. Further benefits include gas central heating, double glazing and access to loft space.

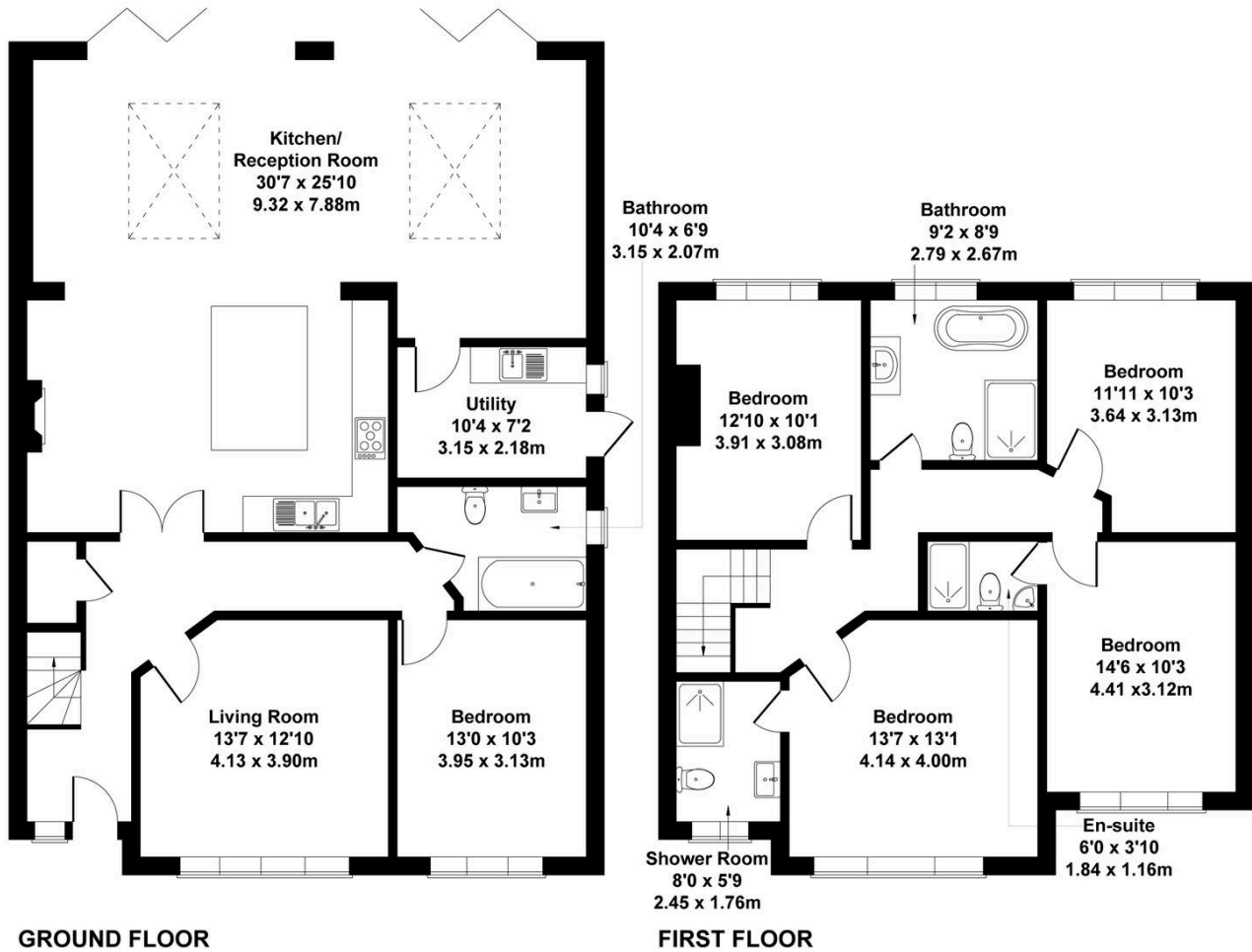
There is potential to extend the property further subject to the relevant planning consent.





Jersey Rd, Osterley, Isleworth TW7 4QJ, UK

Approximate Gross Internal Area
2196 sq ft - 204 sq m



This floorplan is for guidance only and does not form part of an offer or contract.
Buyers or tenants should verify all details through inspection, searches, and surveys.
Measurements are approximate and should not be relied upon for valuation or transactions.
Produced by Plan Portal.
www.evvelondon.co.uk

You can include any text here. The text can be modified upon generating your brochure.