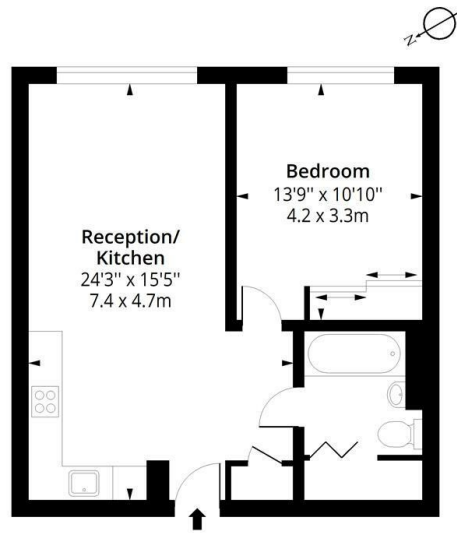




31 Lavender House, Eden Grove, Staines-Upon-Thames, £1,600 Per month

- One bedroom
- Residents gym and cinema
- 24-hour concierge

Lavender House, TW18
 Approx. Gross Internal Area 558 Sq Ft - 51.84 Sq M

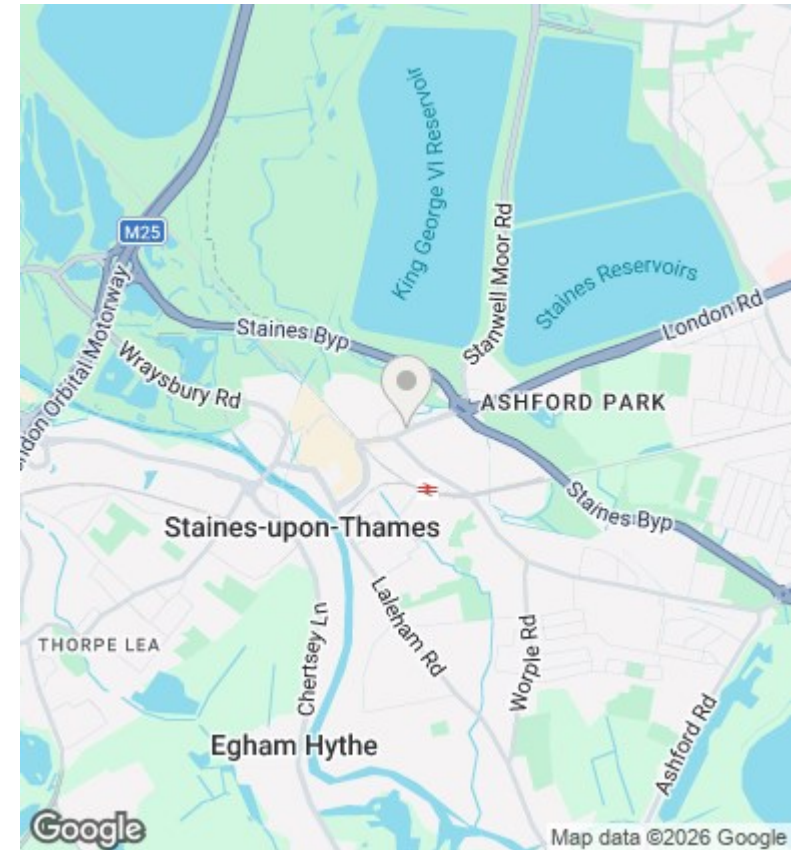


Fourth Floor

Floor Area 558 Sq Ft - 51.84 Sq M



Measured according to RICS IPMS2. Floor plan is for illustrative purposes only and is not to scale. Every attempt has been made to ensure the accuracy of the floor plan shown, however all measurements, fixtures, fittings and data shown are an approximate interpretation for illustrative purposes only. 1 sq m = 10.76 sq feet.
 ipaplus.com Date: 26/2/2024



Directions

Viewings

Viewings by arrangement only. Call 0208 075 4927 to make an appointment.

Council Tax Band

C

EPC Rating:

C

Energy Efficiency Rating		Current	Potential
<i>Very energy efficient - lower running costs</i>			
(92 plus) A			
(81-91) B			
(69-80) C		79	79
(55-68) D			
(39-54) E			
(21-38) F			
(1-20) G			
<i>Not energy efficient - higher running costs</i>			
England & Wales		EU Directive 2002/91/EC	