



Lurline Gardens
Battersea Park, SW11

CHESTERTONS





Chestertons has the pleasure of presenting a fabulous one-bedroom apartment to the rental market in Battersea Park. Finished to a high standard and benefiting from high ceilings throughout, the property comprises a generous living room with feature fireplace and large bay windows, a separate kitchen and dining area with modern integrated appliances, a large double bedroom with built in storage and a modern bathroom with white three-piece suite. The property further benefits from a private terrace accessible through French doors from the kitchen and ample residential permit parking directly outside the front of the property.

Lurline Gardens is a popular residential road within a five-minute walk of Battersea Park and Queenstown Road Mainline stations, as well as numerous bus services providing links into the City, the West End and Chelsea. The cafes, bars, restaurants and shops local to the area are also a convenient five-minute walk from this splendid apartment.

- Finished to a high standard and benefiting from high ceilings throughout
- Generous living room with feature fireplace and large bay windows
- Separate kitchen and dining area with modern integrated appliances

£2,500 pcm

Additional tenant charges apply (fees apply to non-AST tenancies only)

Tenancy Agreement Fee: £300

References per Tenant/Guarantor: £60

Inventory check (approx. £100 – £250 inc. VAT)

chestertons.co.uk/property-to-rent/applicable-fees

Energy Efficiency Rating		Current	Potential
100-92	A		
81-91	B		
69-80	C	73	81
55-68	D		
39-54	E		
21-38	F		
1-20	G		

Not energy efficient - higher running costs

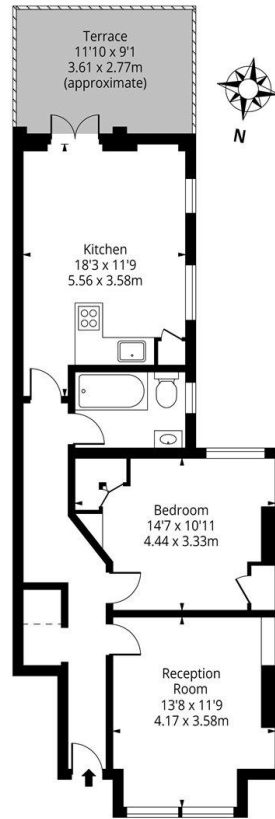
England, Scotland & Wales EU Directive 2002/91/EC

Minimum Term: months
Deposit Required: £2,884.62
Local Authority: London Borough of Wandsworth
Council Tax Band: D
EPC Rating: C
Part Furnished

Chestertons Battersea Park & Nine Elms Lettings

62-64 Battersea Bridge Road
 London
 SW11 3AG
batterseapark@chestertons.co.uk
 02030408269
chestertons.co.uk

Lurline Gardens, SW11



Raised Ground Floor

Approx Gross Internal Area **670 Sq Ft - 62.24 Sq M**

For Illustration Purposes Only - Not To Scale

Ref: No. 32295

