



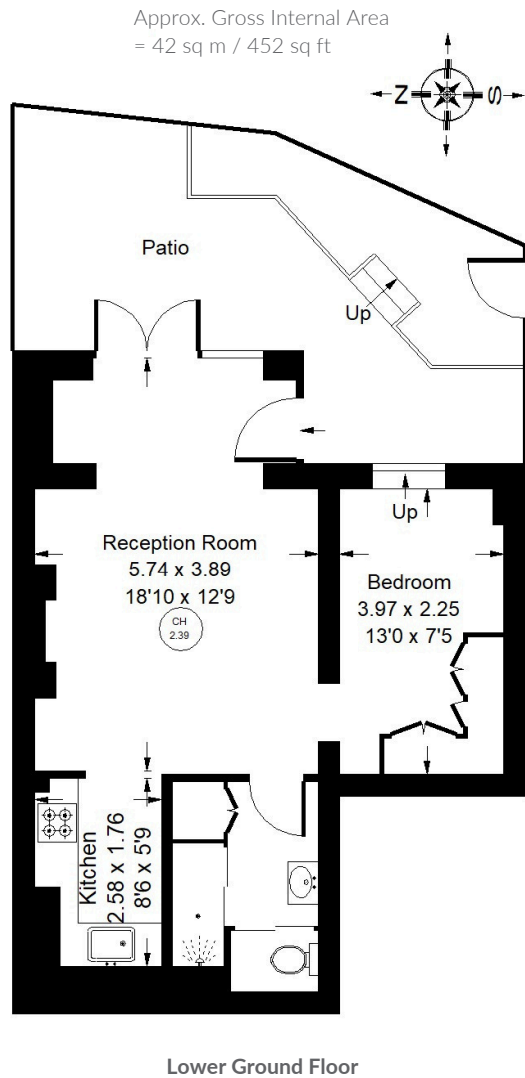
PEMBRIDGE VILLAS, W11



Pembridge Villas, W11

A charming garden flat set within an attractive period conversion in a prime Notting Hill location. Beautifully presented throughout, the property features a spacious open-plan reception room and kitchen, with glazed double doors opening directly onto a private patio garden. The double bedroom benefits from fitted wardrobes and excellent natural light, there is also a bathroom and wooden flooring in the living space. Perfectly positioned just moments from the boutiques, cafés and restaurants of Westbourne Grove, the property is also only a short walk from Notting Hill Gate Underground Station, providing convenient access to the Central, Circle and District lines.





Pembridge Villas, W11 - Share of Freehold Local Authority - Royal Borough of Kensington & Chelsea

- Private Garden
- Open-plan Living
- Prime Notting Hill Location
- Period Conversion
- EPC = C
- Council Tax Band = E



Whilst every attempt has been made to ensure the accuracy of the floor plan, measurements are approximate and not to scale. No guarantee is given on the total square footage of the property quoted on the plan. Figures given are for guidance. Plan is for illustration purposes only, not to be used for valuations.