



Goodge Place, W1T

£450,000

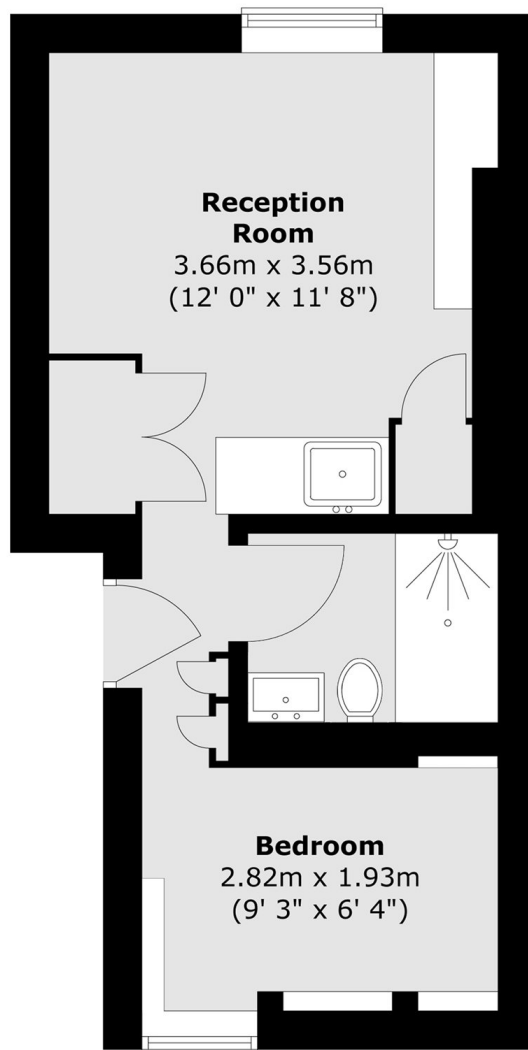
A one bedroom, ground floor flat located in the heart of Fitzrovia, in an attractive period building that also boasts a communal garden. This flat was originally a studio flat but was refurbished into a 1 bedroom flat by the current owners and provides a great space, making an ideal pied-a-terre or buy to let due to the low running costs.

This property boasts a great location in Fitzrovia, with local shops and amenities close by, this is a perfect investment for convenience.

Features

- Quiet Location
- Low Service Charge
- Refurbished Interior
- Close To Local Amenities
- Great Pied-a-Terre
- Communal Garden

Goodge Place, London, W1T



Ground Floor

Total area (approx.) : 24.3 sq. m (261 sq. ft)