



Wish Hill, Eastbourne BN20 9HE

welcome to

Wish Hill, Eastbourne

A charming three-bedroom period home located in the heart of desirable Willingdon Village, arranged over three floors and offering a blend of character features and modern finishes throughout, including a bright living room and three spacious double bedrooms.



Ground Floor

Entrance Porch

Entrance Hall

Lounge

Window to the front and side aspect. Open log burner fire place. Spotighting. Radiator. Restricted head height.

Bedroom 3

Window to the rear aspect. Spotighting. Radiator.

Cloakroom

Comprising a low level W.C. Wash hand basin. Radiator. Extractor fan. Cupboard.

Lower Ground Floor Landing

Stairs leading from ground floor to lower ground floor.

Kitchen

A range of wall and base units with work top over incorporating a sink and drainer unit. Oven with gas hob and cooker hood above. Space and plumbing for dish washer and under counter fridge / freezer. Partly tiled walls. Spotighting. Radiator. Breakfast bar. Under stairs cupboard. Two windows to the side aspect.

Dining Room

Two windows to the side and rear aspect. Door to the rear aspect. Spotighting. Radiator.

First Floor Landing

Stairs leading from ground floor to first floor landing.

Bedroom 1

Window to the rear aspect. Spotighting. Radiator.

Bedroom 2

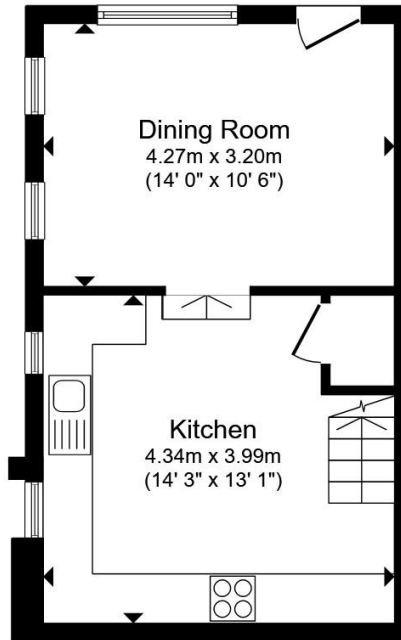
Window to the front aspect. Spotighting. Radiator.

Bathroom

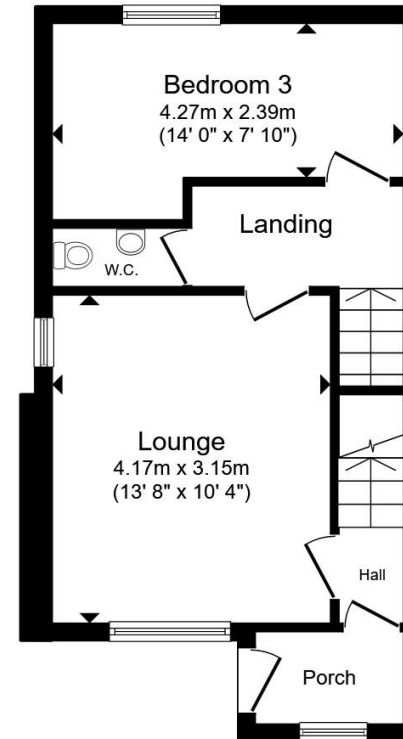
Comprising a bath with mixer taps and over head shower attachment. Low level W.C. Wash hand basin. Spotighting. Partly tiled walls. Window to the side aspect.

Rear Garden

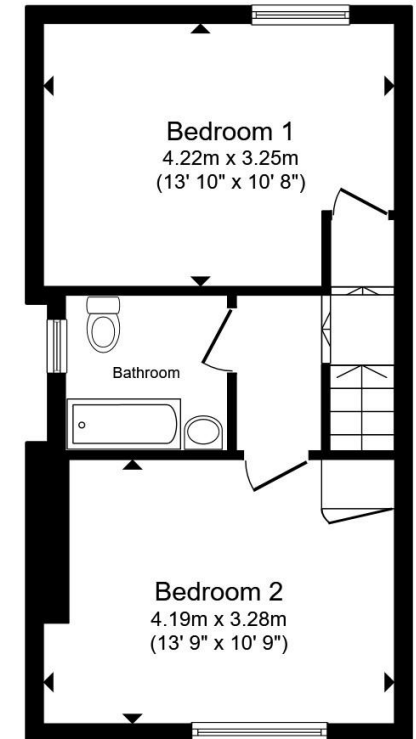
Patio rear garden with fence surround.



Lower Ground Floor



Ground Floor



First Floor

Total floor area 100.2 m² (1,078 sq.ft.) approx

This floor plan is for illustrative purposes only. It is not drawn to scale. Any measurements, floor areas (including any total floor area), openings and orientation are approximate. No details are guaranteed, they cannot be relied upon for any purpose and they do not form part of any agreement. No liability is taken for any error, omission or misstatement. A party must rely upon its own inspection(s). Powered by www.propertybox.io



view this property online fox-and-sons.co.uk/Property/EBN120925



welcome to

Wish Hill, Eastbourne

- THREE DOUBLE BEDROOMS
- PERIOD HOME FULL OF CHARACTER
- ARRANGED OVER THREE FLOORS
- MODERN FINISHES THROUGHOUT
- SPACIOUS KITCHEN/BREAKFAST ROOM

Tenure: Freehold EPC Rating: D

Council Tax Band: D

£450,000



Please note the marker reflects the postcode not the actual property

view this property online fox-and-sons.co.uk/Property/EBN120925



Property Ref:
EBN120925 - 0002

1. MONEY LAUNDERING REGULATIONS Intending purchasers will be asked to produce identification documentation at a later stage and we would ask for your co-operation in order that there is no delay in agreeing the sale. 2. These particulars do not constitute part or all of an offer or contract. 3. The measurements indicated are supplied for guidance only and as such must be considered incorrect. Potential buyers are advised to recheck measurements before committing to any expense. 4. We have not tested any apparatus, equipment, fixtures or services and it is in the buyers interest to check the working condition of any appliances. 5. Where an EPC, or a Home Report (Scotland only) is held for this property, it is available for inspection at the branch by appointment. If you require a printed version of a Home Report, you will need to pay a reasonable production charge reflecting printing and other costs. 6. We are not able to offer an opinion either written or verbal on the content of these reports and this must be obtained from your legal representative. 7. Whilst we take care in preparing these reports, a buyer should ensure that his/her legal representative confirms as soon as possible all matters relating to title including the extent and boundaries of the property and other important matters before exchange of contracts.

Fox & Sons is a trading name of Sequence (UK) Limited which is registered in England and Wales under company number 4268443, Registered Office is Cumbria House, 16-20 Hockliffe Street, Leighton Buzzard, Bedfordshire, LU7 1GN. VAT Registration Number is 500 2481 05.


fox & sons



01323 410911



Eastbourne@fox-and-sons.co.uk



19 Cornfield Road, EASTBOURNE, East Sussex,
BN21 4QD



fox-and-sons.co.uk