



Dorset Street, W1U

£980 Per week

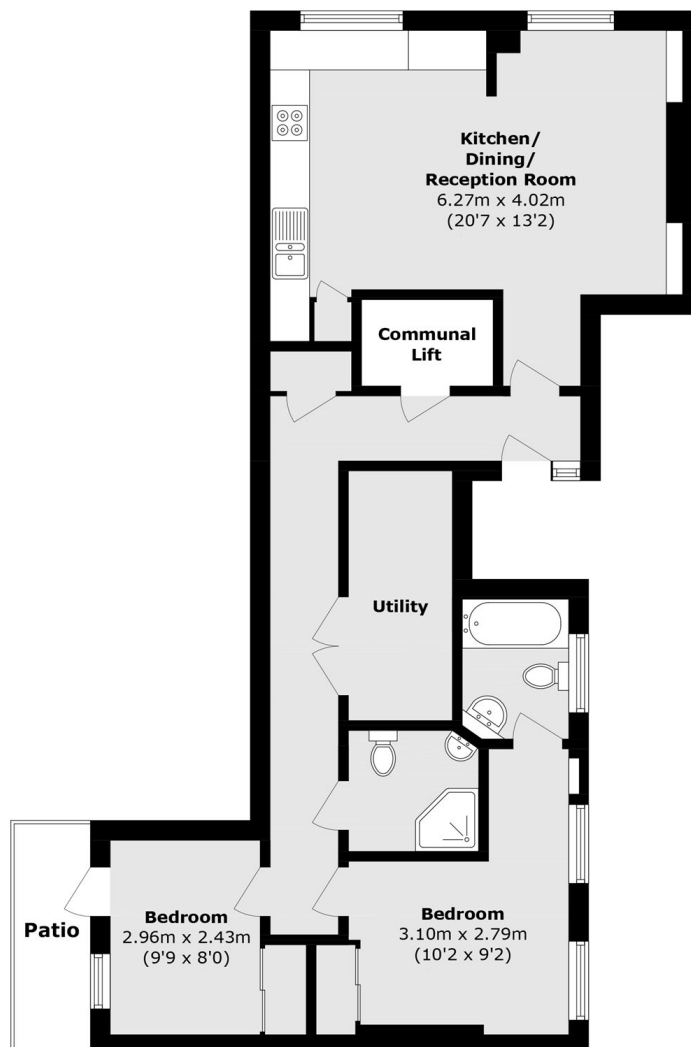
This lateral apartment is on the first floor of an attractive building close to Marylebone High Street. The flat has an open-plan kitchen/reception room, two double bedrooms and two bathrooms.

Dorset Street sits close to Portman Village, with the open spaces of Hyde Park and Regent's Park close by. The property has fantastic transport connections, with Marble Arch and Bond Street Underground stations nearby.

Features

- First Floor Flat
- Two Bedrooms
- Two Bathrooms
- Unfurnished
- Kitchen/Reception
- Lots Of Storage

Dorset Street, London, W1U



Total area (approx.): 80.2 sq. m (863.2 sq. ft)