



WAYNE DIGGINS

exp[®] UK

@ wayne.diggins@exp.uk.com

waynediggins.exp.uk.com

07715 925 332

Cherrydown, Grays, RM16 2PA

From £415,000

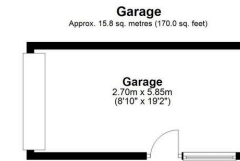
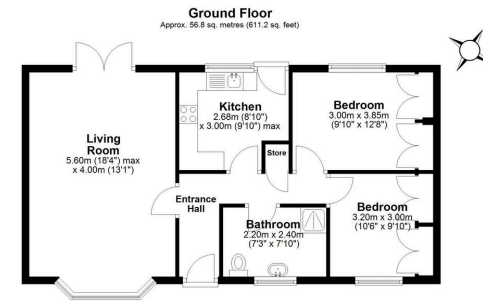
🛏️ 2 🚿 1 🚗 1

- Detached two-bedroom bungalow (Ref: WD1273)
- Good-sized kitchen
- Lovely lounge with French doors opening onto the rear garden
- Private front garden
- Garage with power and off-street parking
- Chain free and ready to move into
- Spacious bathroom
- Gas central heating and double glazing throughout
- Low-maintenance rear garden with large patio area, shrub borders, and outside tap
- Ideal for downsizers seeking single-level living



HAVE A LOOK AT THIS BEAUTIFUL TWO BEDROOM BUNGALOW!!! Ref WD1273 A charming two-bedroom detached bungalow in the heart of North Grays, offered chain free and ideal for downsizers. This delightful home has been thoughtfully designed to provide comfortable and practical living. Inside, you'll find two generously sized double bedrooms, a spacious bathroom, and a good-sized kitchen offering plenty of space for cooking and dining. The lovely lounge is full of natural light and features French doors opening onto the rear garden, creating a seamless flow between indoor and outdoor living – perfect for relaxing or entertaining family and friends. The property benefits from gas central heating and double glazing throughout, ensuring warmth and comfort year-round. Externally, the bungalow is equally impressive.





Total area: approx. 72.6 sq. metres (781.2 sq. feet)

All measurements have been taken as a guide to prospective buyers only and are not precise. This plan is for illustrative purposes only and no responsibility for any error, omission or misstatement. The services, systems and appliances shown have not been tested and no guarantee as to their operability or efficiency can be given. Measurements may have been taken from the widest area and may include wardrobe/closetboard space. No guarantee is given to any measurements including total areas. Buyers are advised to take their own measurements.

© @modghstock | www.modghphoto.co.uk
Plan produced using PlanUp.

Cherrydown, Grays

