



OLD HOSPITAL CLOSE, SW12

£925,000

- Five Bedrooms
- Three Bathrooms
- Off-Street Parking
- No Onward Chain
- Close To Wandsworth Common
- Energy Rating: C





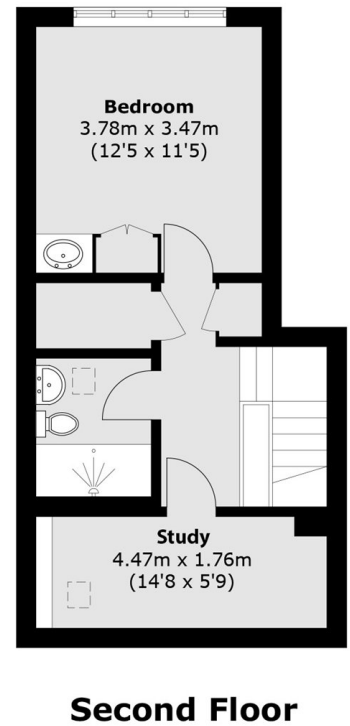
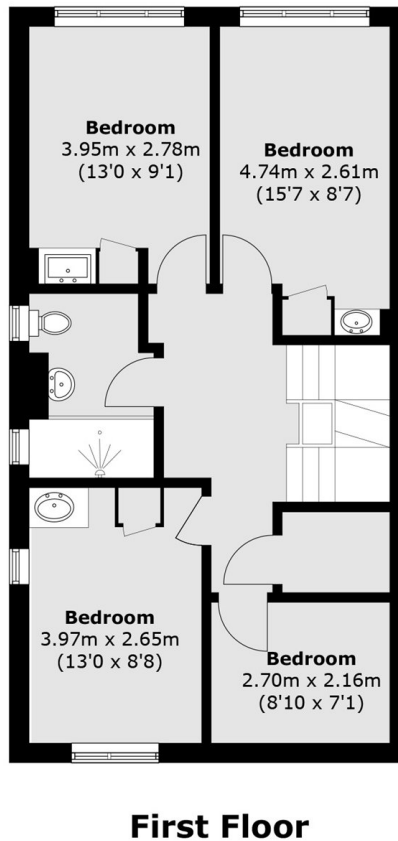
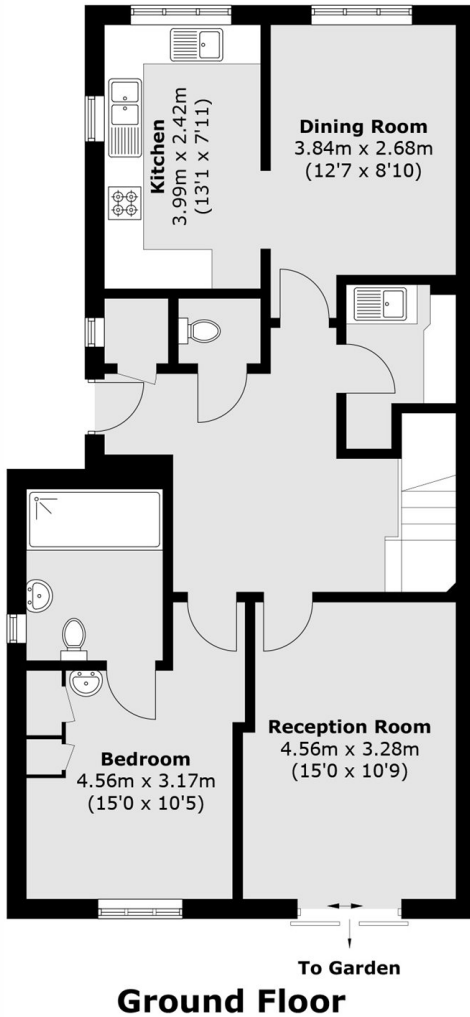
ABOUT THE HOME

A substantial five bedroom freehold house within a quiet sort-after development in Balham. This large house also offers two reception rooms, which lead out to a private garden, three bathrooms and a large kitchen/dining room. The house also offers off street parking and measures just shy of 2000 square feet and further benefits from having no onward chain.

Old Hospital Close is just off St. James's Drive sitting in the enviable location between Balham and Wandsworth Common, where the amenities of both areas are within easy reach. The green open spaces of Wandsworth Common are moments away and Balham mainline and underground stations are also close by offering excellent transport links to the city.







Total area (approx.): 177.5 sq. m (1,910.5 sq. ft)

JACKSONS BALHAM

8-11 Balham Station Road,
London, SW12 9SG
Sales: 020 8675 6555
Lettings: 020 8675 6565

Energy Rating: We aim to make our particulars both accurate and reliable. However they are not guaranteed; nor do they form part of an offer or contract. If you require clarification on any points then please contact us, especially if you're traveling some distance to view. Please note that appliances and heating systems have not been tested and therefore no warranties can be given as to their good working order.