



The Deepdale, Plot 94

# The Deepdale, Plot 94

Trevithick Manor Park, Newquay, TR8 4GA

Newquay 1.5 miles Newquay Airport 8.2 miles Truro 13 miles

The Deepdale, a 2 bedroom semi detached home offers a balanced feel with flexible living options to suit your needs.

- 2 bedroom semi detached
- Separate living room
- Ensuite to bedroom 1
- 10 year warranty
- Council tax band TBC
- Open plan kitchen/dining area
- Downstairs WC
- Study
- Freehold
- EPC TBC

Guide Price £307,500

## SITUATION

A prime location, these new build properties for sale in Newquay are set in one of Cornwall's most iconic coastal towns. Known for its beaches, surf and laid-back lifestyle, whether you're after a modern one, two, three or four-bedroom home, you'll find energy-efficient features, high-quality finishes and a friendly neighbourhood feel – all close to sandy shores and everyday essentials.

At Trevithick Manor Park, each of the new homes are designed for real life. Complete with money and time-saving features, the family-friendly development also includes a play area kids will love and beautiful planting throughout to bring you closer to nature.



## DESCRIPTION

The Deepdale has a lovely balanced feel, created by a central entrance hall and generous living space to either side. It's much the same upstairs, with bedroom one to one side of the landing, and two bedrooms on the other side. If two bedrooms are plenty for you, the third, smaller room, would make a great home office and a great option.

## OUTSIDE

This home benefits from 2 parking spaces and a private rear garden.

## AGENT NOTES

Annual service charge will be payable.  
Some images may be CGI. Internal photos are provided to illustrate the high-quality finish and are taken from a similar property.

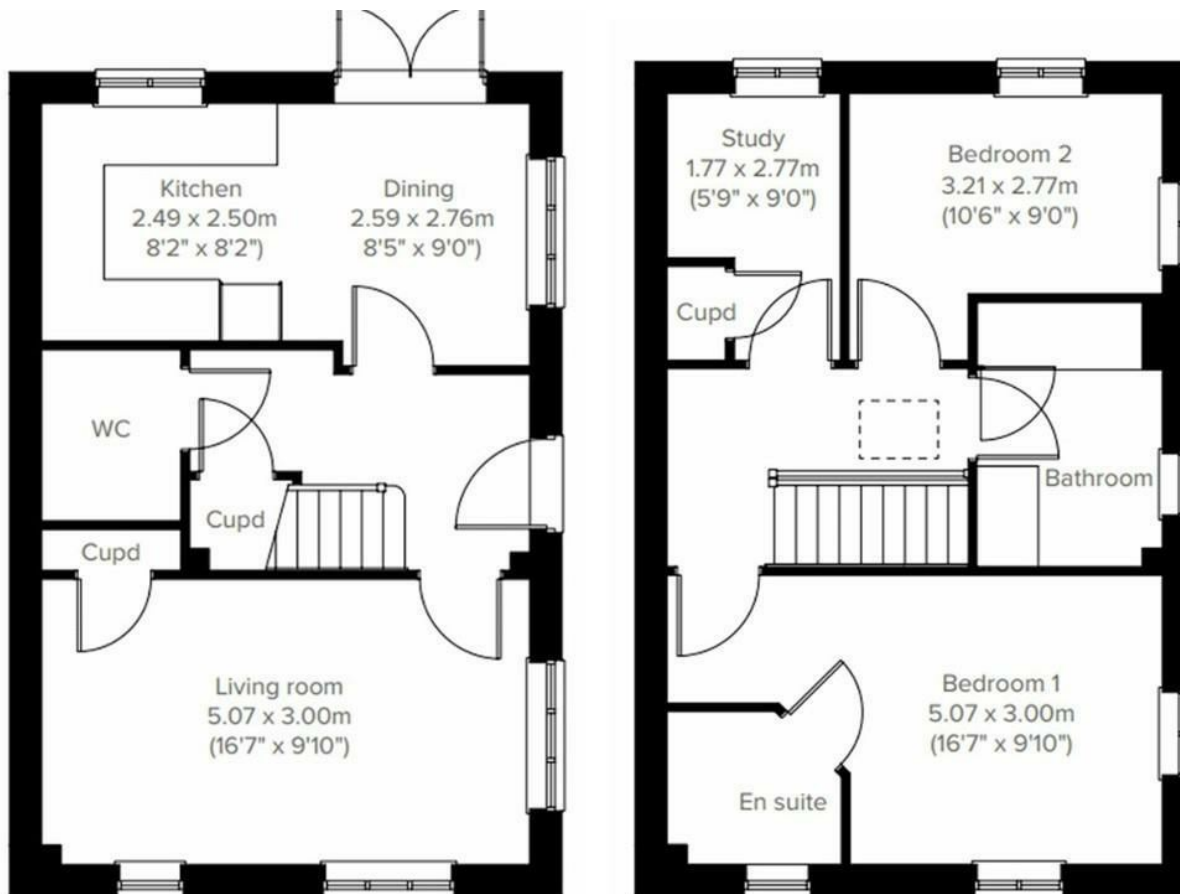
## VIEWINGS

Strictly by prior appointment with Stags Truro office on 01872 264488.

## DIRECTIONS

From the A30, take the junction sign posted for Newquay and continue onto the A39. At the next roundabout, take the second exit for Newquay (A392). Continue on this road, driving through Quintrell Downs, until you reach the second roundabout after this village where you will find the Trevithick Manor Park Development on the left.





IMPORTANT: Stags gives notice that: 1. These particulars are a general guide to the description of the property and are not to be relied upon for any purpose. 2. These particulars do not constitute part of an offer or contract. 3. We have not carried out a structural survey and the services, appliances and fittings have not been tested or assessed. Purchasers must satisfy themselves. 4. All photographs, measurements, floorplans and distances referred to are given as a guide only. 5. It should not be assumed that the property has all necessary planning, building regulation or other consents. 6. Whilst we have tried to describe the property as accurately as possible, if there is anything you have particular concerns over or sensitivities to, or would like further information about, please ask prior to arranging a viewing.



61 Lemon Street, Truro, TR1 2PE

truro@stags.co.uk

01872 264488