



GREENWICH HIGH ROAD, SE10

£475,000

First floor modern apartment

Two large bedrooms

Two bathrooms

Long lease

Refurbished kitchen

Energy rating: c

@marshandparsons
marshandparsons.co.uk

MARSH &
PARSONS



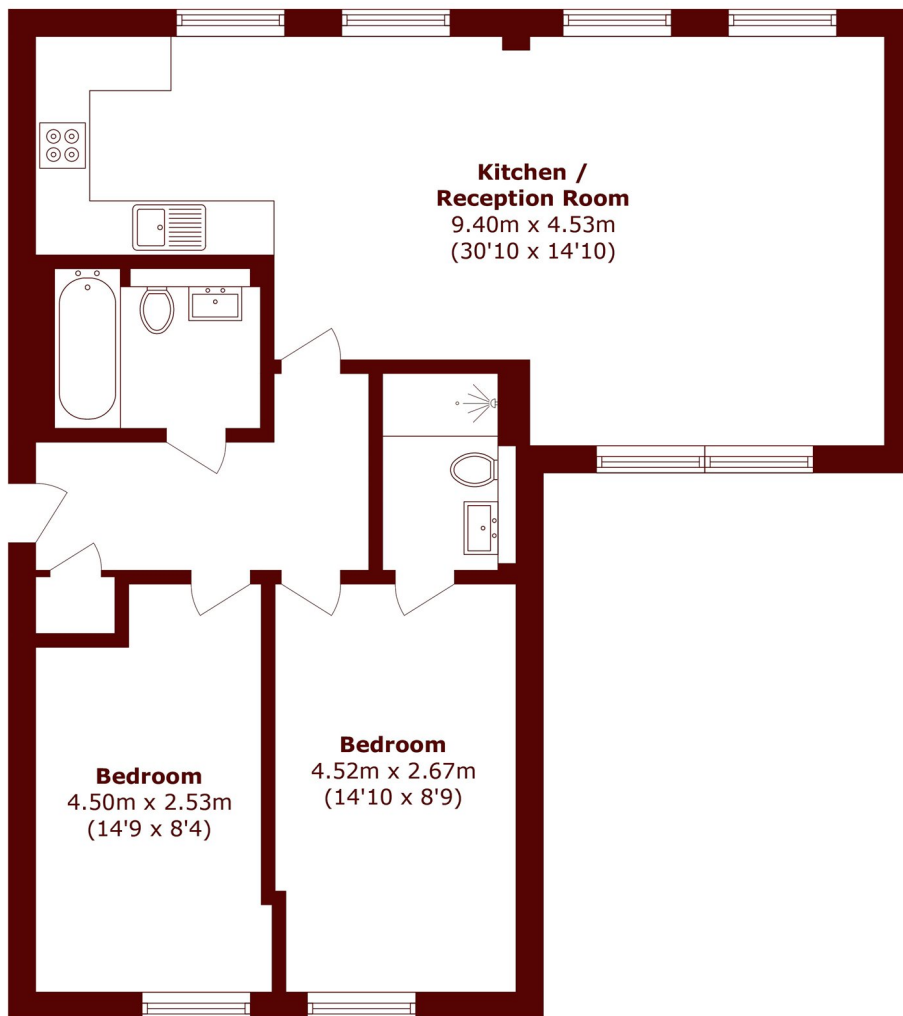
ABOUT THE PROPERTY

Beautifully presented first floor modern apartment, forming part of a small development and with a very long lease. The interior comprises a large entrance hall, two large bedrooms, en suite to principal bedroom, a family bathroom, bright and spacious double aspect living room with dining space and renovated open plan kitchen. Further benefits include upgraded stylish flooring, ample storage, and a chain free seller.

Greenwich rail and DLR stations are a short walk away making this very convenient for those wanting to get into central London quickly. The town centre is also close by, where you will find the royal park, covered market, the Royal Naval college and Greenwich pier to name a few.



STEP INSIDE GREENWICH HIGH ROAD



Total area (approx.): 74.7 sq. m (804.0 sq. ft)

Greenwich
020 8312 8312

Energy Rating: C We aim to make our particulars both accurate and reliable. However, they are not guaranteed; nor do they form part of an offer or contract. If you require clarification on any points then please contact us, especially if you're traveling some distance to view. Please note that appliances and heating systems have not been tested and therefore no warranties can be given as to their good working order

MARSH &
PARSONS