



Longmore Road
Shirley Solihull

burchell
edwards

Longmore Road Shirley Solihull B90 3EL

for sale offers over
£550,000



Property Description

Introducing Your Dream Family Home!

Step into luxury with this immaculate, modern three-bedroom property, perfectly designed for family living. Bathed in natural light, the home boasts beautiful bay windows and an expansive open-plan kitchen diner, complete with skylights and bifold doors with integral blinds. Enjoy the convenience of two stylish shower rooms, one on each floor.

The rear garden features a fantastic annex, ideal for entertaining guests or creating a private retreat. With a large driveway for ample off-road parking and a garage, practicality meets elegance.

Located in the highly sought-after catchment area for Tudor Grange Academy, this property ensures access to outstanding education. Benefit from excellent transport links and a short distance to Sears Retail Park, making daily life a breeze.

Don't miss the opportunity to make this exceptional property your forever home! Contact us today to arrange a viewing."

Entrance Hall

tiled floor

Lounge

Double bedroom, double glazed bay window to front, radiator and log burner.

Kitchen

Kitchen comprising of a range of wall and base units, sink and drainer oven with gas hob and extractor fan over head. Spotlights, 2 Skylights and i fold doors with blinds.

Landing

Side double glazed window.

Bedroom One

Front double glazed bay window, radiator and built in storage

Bedroom Two

Double glazed window to the rear, built in storage and radiator

Bedroom Three

Front double glazed window and radiator.

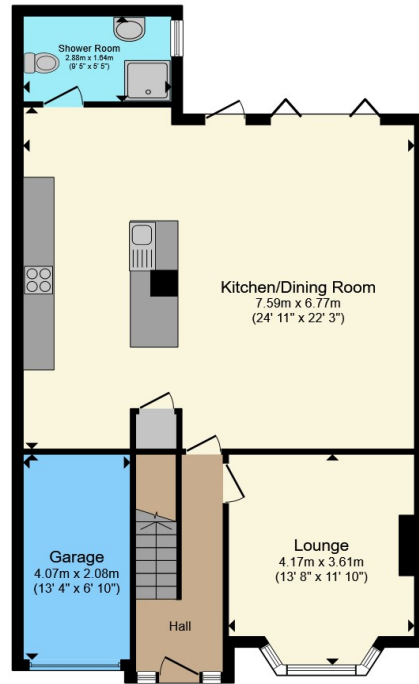
Shower Room

Shower, basin, w/c, vanity light up mirror fully tiled and spotlights.

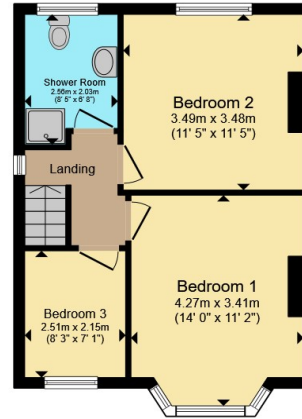




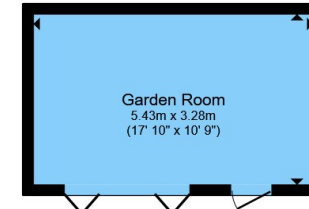




Ground Floor



First Floor



Outbuilding

Total floor area 144.6 m² (1,556 sq.ft.) approx

This floor plan is for illustrative purposes only. It is not drawn to scale. Any measurements, floor areas (including any total floor area), openings and orientation are approximate. No details are guaranteed, they cannot be relied upon for any purpose and they do not form part of any agreement. No liability is taken for any error, omission or misstatement. A party must rely upon its own inspection(s). Powered by www.propertybox.io



To view this property please contact Burchell Edwards on

T 0121 733 3553
E shirley@burchelledwards.co.uk

183 Stratford Road Shirley
 SOLIHULL B90 3AU

EPC Rating: C Council Tax
 Band: D

Tenure: Freehold

view this property online burchelledwards.co.uk/Property/SHI207911



1. MONEY LAUNDERING REGULATIONS Intending purchasers will be asked to produce identification documentation at a later stage and we would ask for your co-operation in order that there will be no delay in agreeing the sale. 2. These particulars do not constitute part or all of an offer or contract. 3. The measurements indicated are supplied for guidance only and as such must be considered incorrect. Potential buyers are advised to recheck measurements before committing to any expense. 4. We have not tested any apparatus, equipment, fixtures, fittings or services and it is in the buyers interest to check the working condition of any appliances.

Burchell Edwards is a trading name of Connells Residential which is registered in England and Wales under company number 1489613, Registered Office is Cumbria House, 16-20 Hockliffe Street, Leighton Buzzard, Bedfordshire, LU7 1GN. VAT Registration Number is 500 2481 05.

See all our properties at www.burchelledwards.co.uk | www.rightmove.co.uk | www.zoopla.co.uk

Property Ref: SHI207911 - 0008