

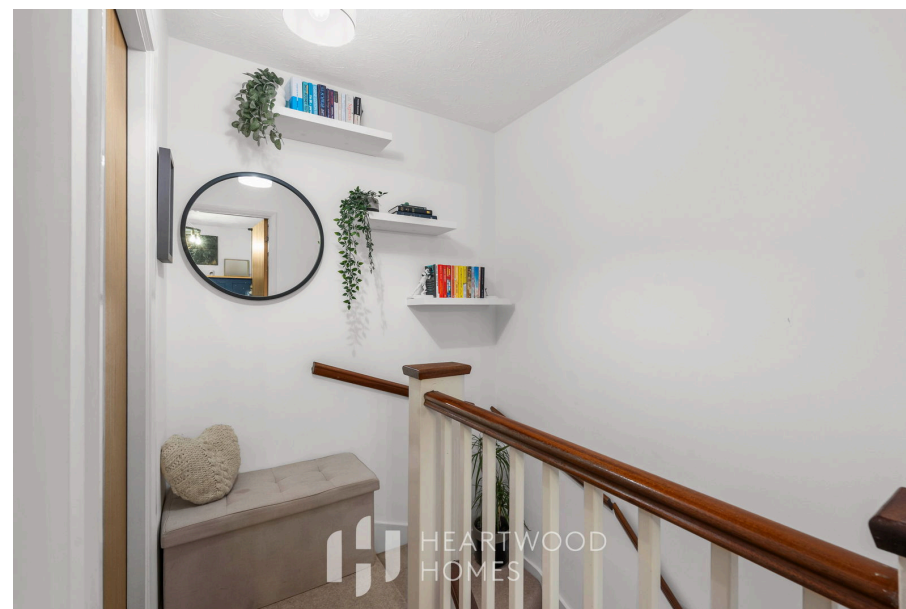




# St Leonards Court, House Lane, Sandridge, Hertfordshire, AL4 9UY

£300,000

🛏 1 🚿 1 🚿 1





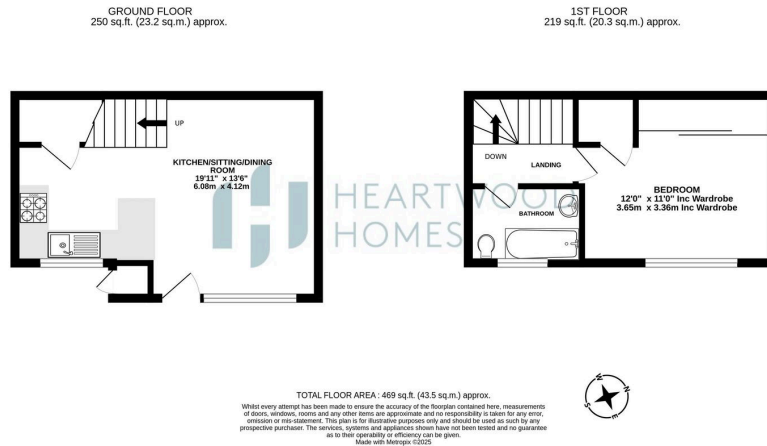
A charming one-bedroom cluster home, quietly positioned in a sought-after cul de sac in the delightful village of Sandridge. This picturesque village boasts a selection of country pubs, a local shop, and is conveniently close to well-regarded schools. Just a short stroll away, Heartwood Forest offers beautiful woodland and countryside walks, perfect for anyone who enjoys spending time in nature. St Albans City Centre and Harpenden are only a short drive, giving you easy access to rail links into London St Pancras, along with a variety of shops and leisure options.

Inside, the home features a bright open-plan kitchen and living/dining area, ideal for modern living and entertaining. The kitchen is fitted with contemporary units, plenty of storage, and a breakfast bar. Upstairs, there is a spacious double bedroom with full-width fitted wardrobes, access to a good size boarded loft space providing handy storage and a well-presented bathroom.

Outside, the property enjoys a tucked-away position at the end of the cul de sac, with ample residents' parking and pleasant communal areas to relax and unwind.

Call us today to arrange a viewing and see this lovely home for yourself.





- One-bedroom cluster home in a quiet Sandridge cul de sac
- Modern fitted kitchen with breakfast bar and ample storage
- Well-presented bathroom
- Ample residents' parking
- Short drive to St Albans, Harpenden, and London rail links
- Bright open-plan kitchen and living/dining area
- Spacious double bedroom with full-width fitted wardrobes
- Tucked-away position at the end of the cul de sac
- Close to local shops, pubs, and highly regarded schools
- EPC Grade C

