



RCP
Welcome
New Bridge
Car P

Apt 904 Embankment Exchange, 98 Greengate, Salford, M3 7JD

We are pleased to have for sale this highly specified two bedroom apartment located on the 9th floor of the Embankment Exchange development in Salford. The property comprises of a spacious lounge and kitchen with integrated appliances, two double bedrooms with the master including an en-suite, a family sized bathroom with modern fixtures and fittings. The development benefits from a communal garden, residence lounge and working space. Access to spa facilities. No chain. EWS-1 Available.

Price £320,000

Viewing arrangements

Viewing strictly by appointment through the agent
245 Deansgate, Manchester, M3 4EN 0161 833 9499 opt 3

Entrance Hallway

Leads to all rooms

Kitchen / Lounge

11'6" x 23'11"

Range of wall and base units with complimentary kitchen worktop, integrated fridge / freezer, oven / hob, extractor fan, dishwasher. The spacious lounge has floor to ceiling windows, spot lighting, electric heater, T.V access point.

Bedroom One

16'8" x 8'10"

Fitted carpet, spot lighting, floor to ceiling window, dressing area, access to main bathroom.

En-suite

8'9" x 4'5"

Low level W.C, hand wash basin, fitted mirror, en-closed shower cubicle, rain attachment with mixer, heated towel rail.

Bedroom Two

8'9" x 11'8"

Fitted carpet, spot lighting, floor to ceiling window, electric heater.

Bathroom

7'10" x 6'11"

Low level W.C, hand wash basin, fitted mirror, bath with mixer, heated towel rail.

Externally

Access to communal gardens, Gym, Spa (membership applies)

Additional Information

Service Charge- £3,483.24

Ground Rent - Peppercorn

Leasehold - 999 years from 2025

Council Tax Band - D

EPC Rating - B

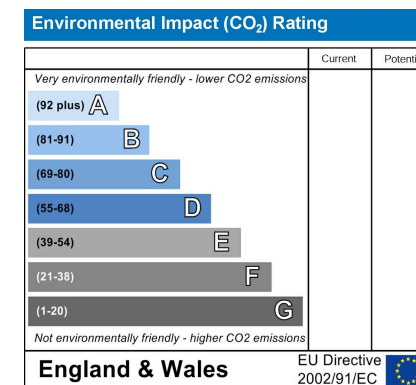
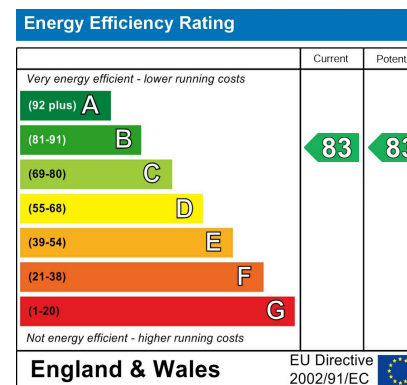
Managing Agent - Legacie Management

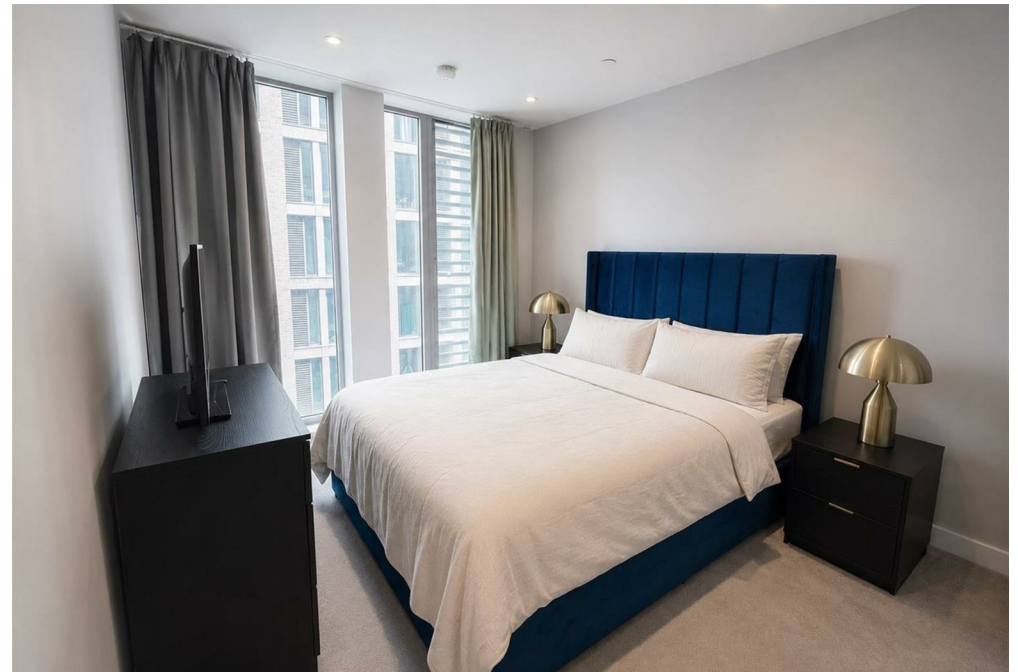
Agents notes

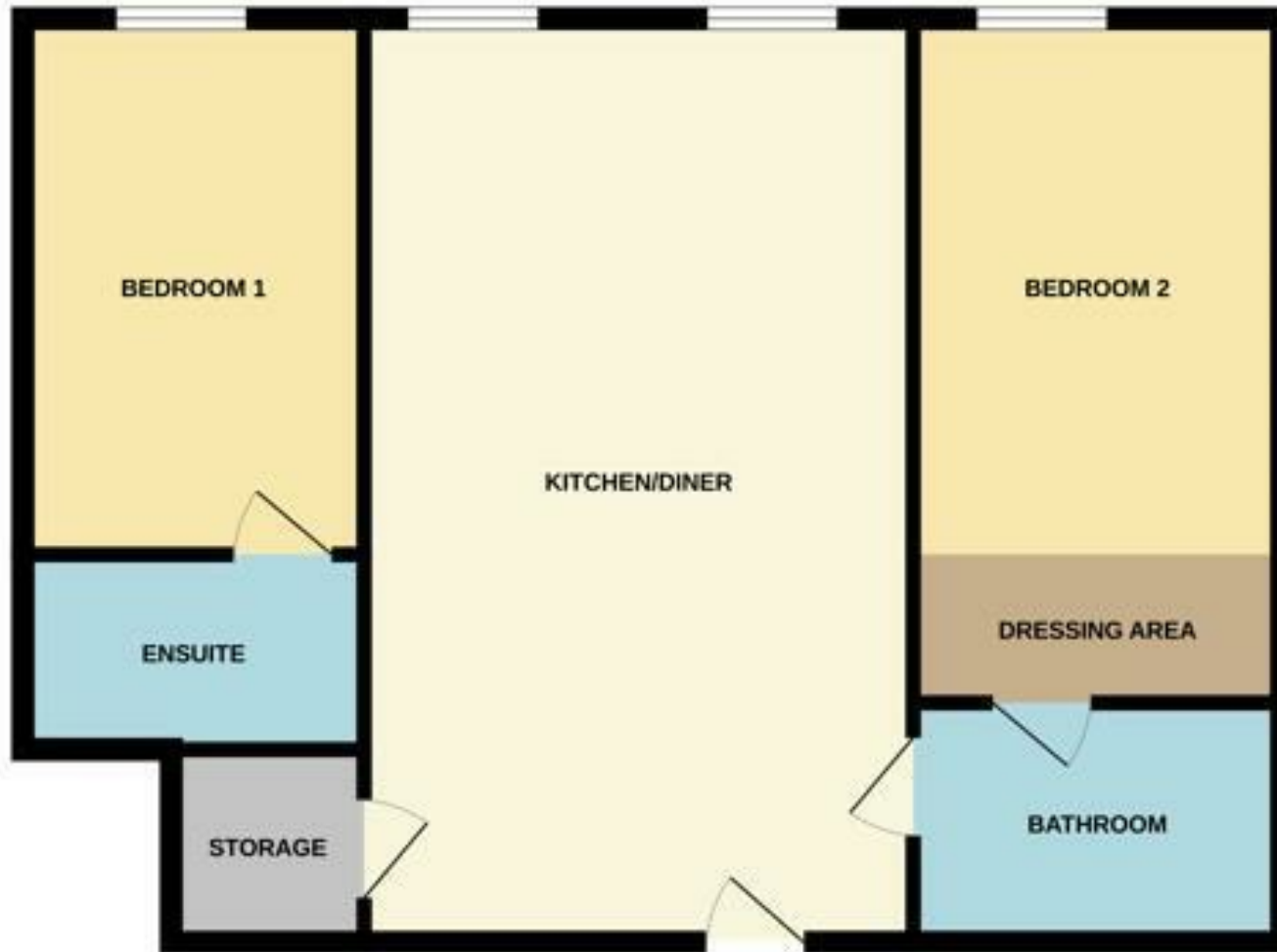
To be able to purchase a property in the United Kingdom all agents have a legal requirement to conduct Identity checks on all customers involved in the transaction to fulfil their obligations under Anti Money Laundering regulations. We outsource this check to a third party and a charge will apply. Ask the branch for further details

Disclaimer

IMPORTANT NOTE TO PURCHASERS: The lease, ground rent and service charges should all be checked via the solicitors for clarification. We endeavour to make our sales particulars accurate and reliable, however, they do not constitute or form part of an offer or any contract and none is to be relied upon as statements of representation or fact. The services, systems and appliances listed in this specification have not been tested by us and no guarantee as to their operating ability or efficiency is given. All measurements have been taken as guide to prospective buyers only, and are not precise. If floor plans were included, these may not be to scale and accuracy is not guaranteed. If you require clarification or further information on any points, please contact us.







These particulars are believed to be accurate but they are not guaranteed and do not form a contract. Neither Jordan Fishwick nor the vendor or lessor accept any responsibility in respect of these particulars, which are not intended to be statements or representations of fact and any intending purchaser or lessee must satisfy himself by inspection or otherwise as to the correctness of each of the statements contained in these particulars. Any floorplans on this brochure are for illustrative purposes only and are not necessarily to scale.

Offices at: Chorlton, Didsbury, Disley, Hale, Glossop, Macclesfield, Manchester Deansgate, Manchester Whitworth Street, New Mills, Sale, Wilmslow and Withington

245 Deansgate, Manchester, M3 4EN

0161 833 9499 opt 3

manchester@jordanfishwick.co.uk

www.jordanfishwick.co.uk

