



## PEMBROKE ROAD

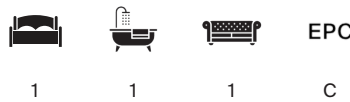
Kensington W8





## A BEAUTIFULLY PRESENTED ONE BEDROOM APARTMENT

Situated on the first floor (with lift) of this sought-after Art Deco building, ideally located closeby both High Street Kensington and Earl's Court.



Local Authority: Royal Borough of Kensington and Chelsea  
Council Tax band: E

Tenure: Leasehold, approximately 979 years remaining  
Service charge: £4,674 per annum (including heating and hot water), reviewed yearly,  
next review due 2026

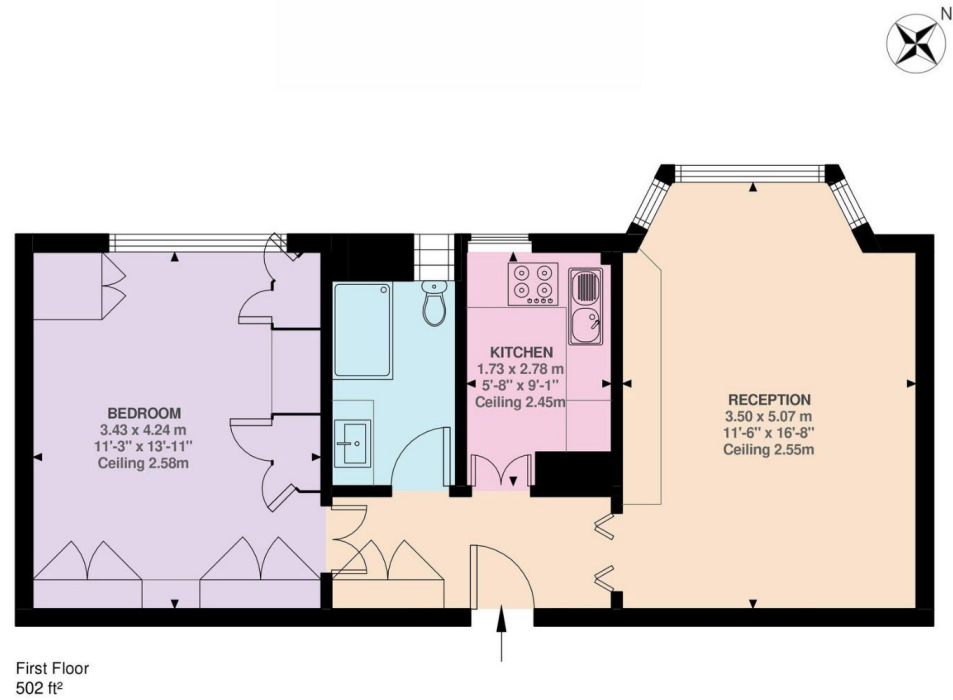
Guide Price: £650,000

The property measures approximately 500 sq ft, and briefly comprises: entrance hall, reception, contemporary fitted kitchen, double bedroom and shower room.

Residents benefit from 24-hour portage and extensive communal gardens, offering both convenience and a sense of community.

Chatsworth Court provides easy access to Kensington's vibrant array of shops, restaurants, and cultural attractions, as well as excellent transport links, ensuring seamless connectivity to the rest of London. In addition to this, it is in close proximity to the amenities of Holland Park and also Earls Court.

\*Please note we have been unable to confirm the current ground rent or review period. You should make your own enquiries.



Approximate Gross Internal Area = 46.61 sq m / 502 sq ft

This plan is for layout guidance only. Not drawn to scale unless stated. Windows and door openings are approximate. Whilst every care is taken in the preparation of this plan, please check all dimensions, shapes and compass bearings before making any decisions reliant upon them. (ID767266)

We would be delighted  
to tell you more.

**Jordanna Mancina**  
+44 20 3892 3573  
[jordanna.mancina@knightfrank.com](mailto:jordanna.mancina@knightfrank.com)

**Knight Frank Kensington**  
52-56 Kensington Church Street  
London W8 4DB

[knightfrank.co.uk](https://knightfrank.co.uk)

Your partners in property

1. Particulars: These particulars are not an offer or contract, nor part of one. You should not rely on statements given by KF West Midlands Ltd., in the particulars, by word of mouth or in writing ("information") as being factually accurate about the property, its condition or its value. Neither KF West Midlands Ltd, nor any joint agent has any authority to make any representations about the property, and accordingly any information given is entirely without responsibility on the part of KF West Midlands Ltd. 2. Material Information: Please note that the material information is provided to KF West Midlands Ltd, by third parties and is provided here as a guide only. While KF West Midlands Ltd, has taken steps to verify this information, we advise you to confirm the details of any such material information prior to any offer being submitted. If we are informed of changes to this information by the seller or another third party, we will use reasonable endeavours to update this as soon as practical. 3. Photos, Videos etc: The photographs, property videos and virtual viewings etc. show only certain parts of the property as they appeared at the time they were taken. Areas, measurements and distances given are approximate only. 4. Regulations etc: Any reference to alterations to, or use of, any part of the property does not mean that any necessary planning, building regulations or other consent has been obtained. A buyer must find out by inspection or in other ways that these matters have been properly dealt with and that all information is correct. 5. Fixtures and fittings: A list of the fitted carpets, curtains, light fittings and other items fixed to the property which are included in the sale (or may be available by separate negotiation) will be provided by the Seller's Solicitors. 6. VAT: The VAT position relating to the property may change without notice. 7. To find out how we process Personal Data, please refer to our Group Privacy Statement and other notices at <https://www.knightfrank.com/legals/privacy-statement>.

Particulars dated January 2026. Photographs and videos dated January 2026. All information is correct at the time of going to print. KF West Midlands Limited, a company registered in England and Wales with registered number 13144773. Our registered office is at 9 College Hill, Shrewsbury, Shropshire, SY1 1LZ. KF West Midlands Limited is an independently owned member of the Knight Frank Network operating under licence from Knight Frank LLP