



20 Morris Way, London Colney



## 20 Morris Way

London Colney, St. Albans

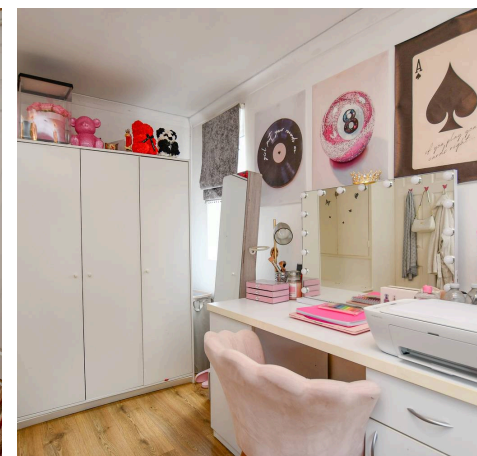
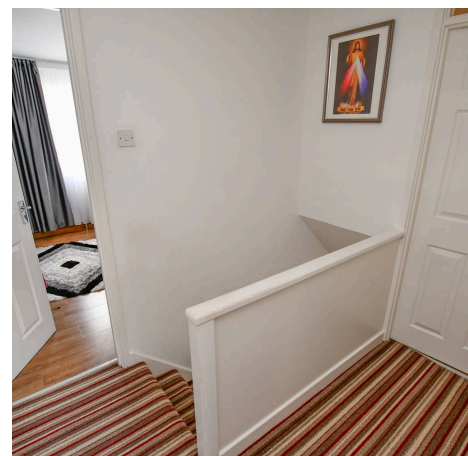
Situated on the highly sought-after Morris Way in London Colney, this three-bedroom semi-detached home presents an exciting opportunity to create a superb family residence, subject to the necessary planning permissions. Offered in good condition throughout and available chain free, the property combines comfortable living with excellent scope for future enhancement.

The accommodation has been thoughtfully extended to the rear, creating a larger-than-average kitchen/breakfast room that provides an ideal space for everyday family life and entertaining alike. A bright and welcoming lounge offers a relaxing setting, while a modern shower room completes the ground floor.

Upstairs, the property features three well-proportioned bedrooms, all offering comfortable accommodation and flexibility for growing families or those working from home.

Externally, the home benefits from both front and rear gardens, providing ample outdoor space to enjoy. Further advantages include off-street parking and a garage, adding practicality and convenience.

A fantastic opportunity in a desirable residential location, this property offers endless potential to create a truly exceptional home. Offered to the market chain free.







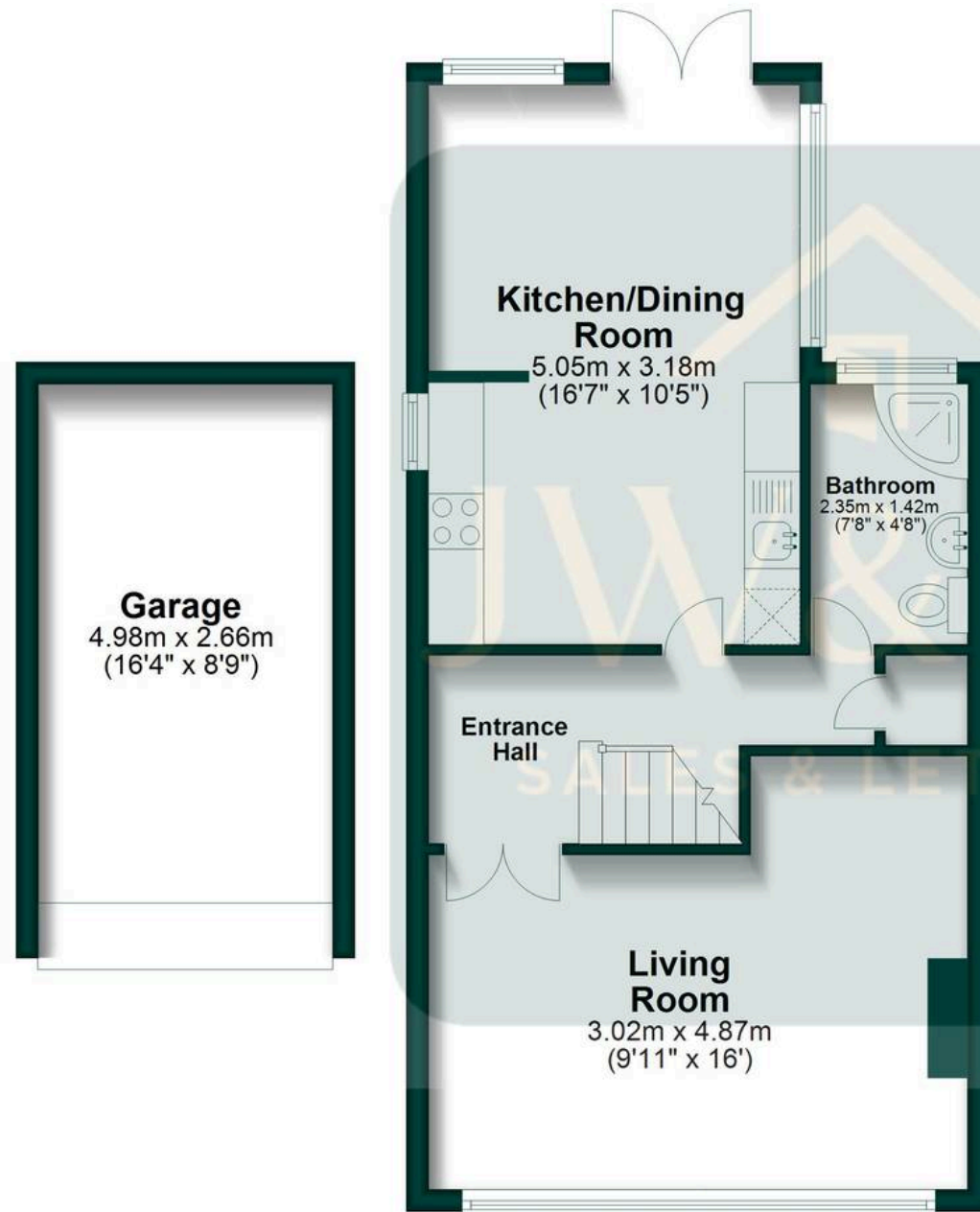
## 20 Morris Way

London Colney, St. Albans

- Semi-Detached House
- Three Bedrooms
- Extended
- Further Potential for Extension S.T.P.P
- Off Street Parking
- Garage
- Sought After Location
- Chain Free

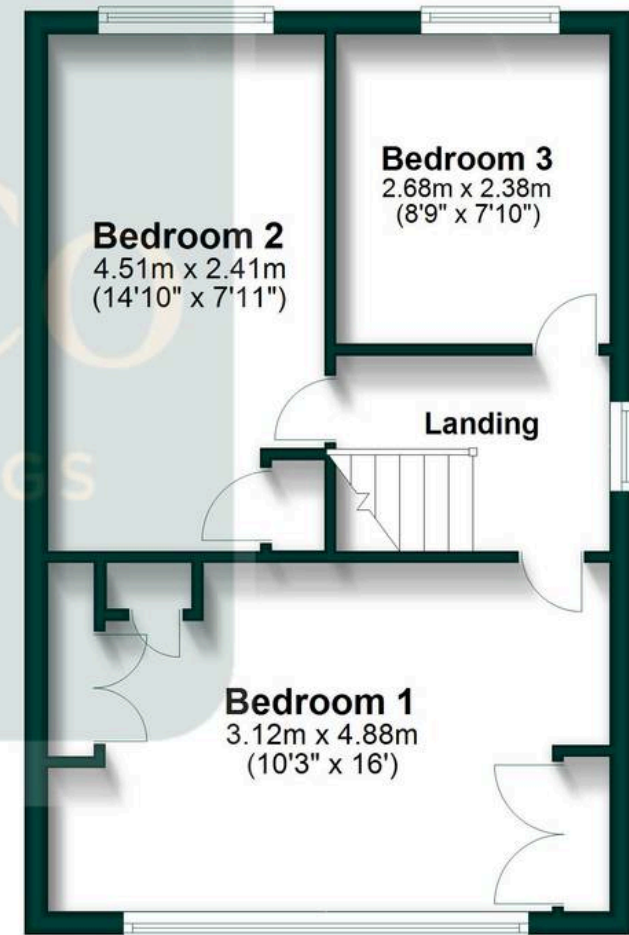
## Ground Floor

Approx. 57.2 sq. metres (615.2 sq. feet)



## First Floor

Approx. 37.8 sq. metres (406.5 sq. feet)



Total area: approx. 94.9 sq. metres (1021.7 sq. feet)



**JW&Co**

J W & Co Langleys, 3 London Road - AL1 1LA

01727 844444 · [stalbins@jwandco.co.uk](mailto:stalbins@jwandco.co.uk) · [www.jwandco.co.uk](http://www.jwandco.co.uk)

