



Harrow Road NW10

Parkheath
Sold on Service





Harrow Road, NW10
£599,950
Leasehold

- Large 2 bedroom apartment of circa 887 Sq Ft
- Modern building that completed in 2014
- Secure parking space in a gated car park
- Third floor serviced by a lift
- Enclosed balcony with open views
- Close proximity to both Kensal Rise/Green Stations
- Short walk to Notting Hill
- Large open plan kitchen/reception
- 2 large double bedrooms
- EPC: Rating B, Council Tax: Brent band D

Belsize Park/Hampstead
 208 Haverstock Hill
 NW3 2AG
 Sales 020 7431 1234
 Lettings 020 7431 3104
nw3@parkheath.com

South/West Hampstead
 192 West End Lane
 NW6 1SG
 Sales & Lettings
 Tel 020 7794 7111
192@parkheath.com

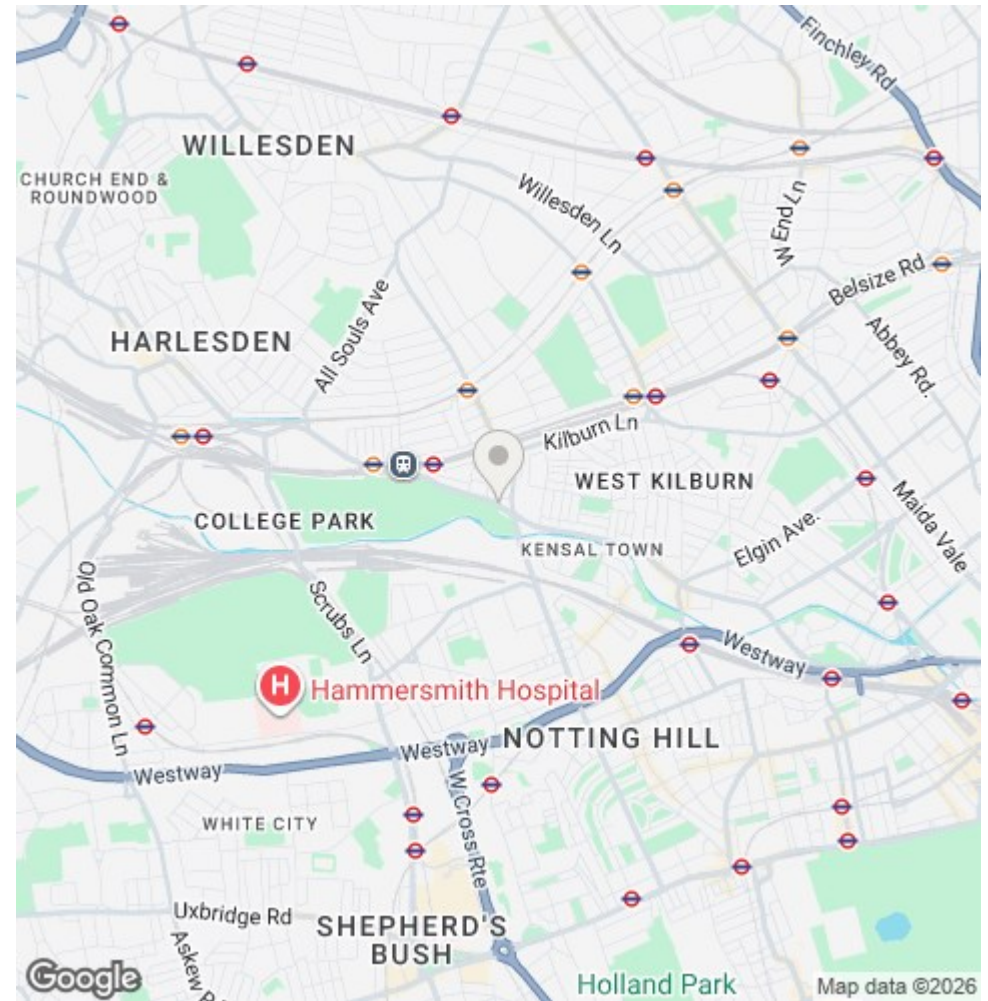
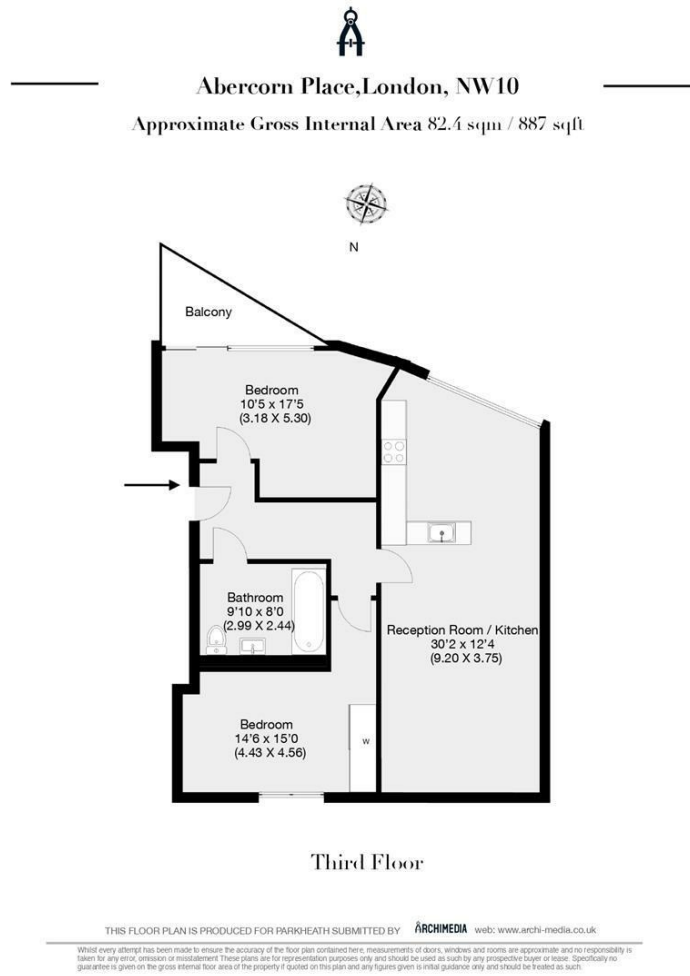
Kensal Rise
 54-56 Chamberlayne Rd
 NW10 3JH
 Tel 020 8960 4845
kensal@parkheath.com

Property Management
 192 West End Lane
 NW6 1SG
 020 7433 6174
pm@parkheath.com

www.parkheath.com

Parkheath
Sold on Service

Brent Tax band D



The particulars do not constitute part of an offer or contract. The particulars, including text, photographs and plans, are for the guidance only of prospective purchasers/tenants and must not be relied upon as statements of fact. The descriptions provided therein represent the opinion of the author and whilst given in good faith should not be construed as statements of fact. Nothing in these particulars shall be deemed a statement that the property is in good condition or otherwise or that any services or facilities are in good working order. All measurements are approximate