



## Gloucester Drive, N4

### £400,000

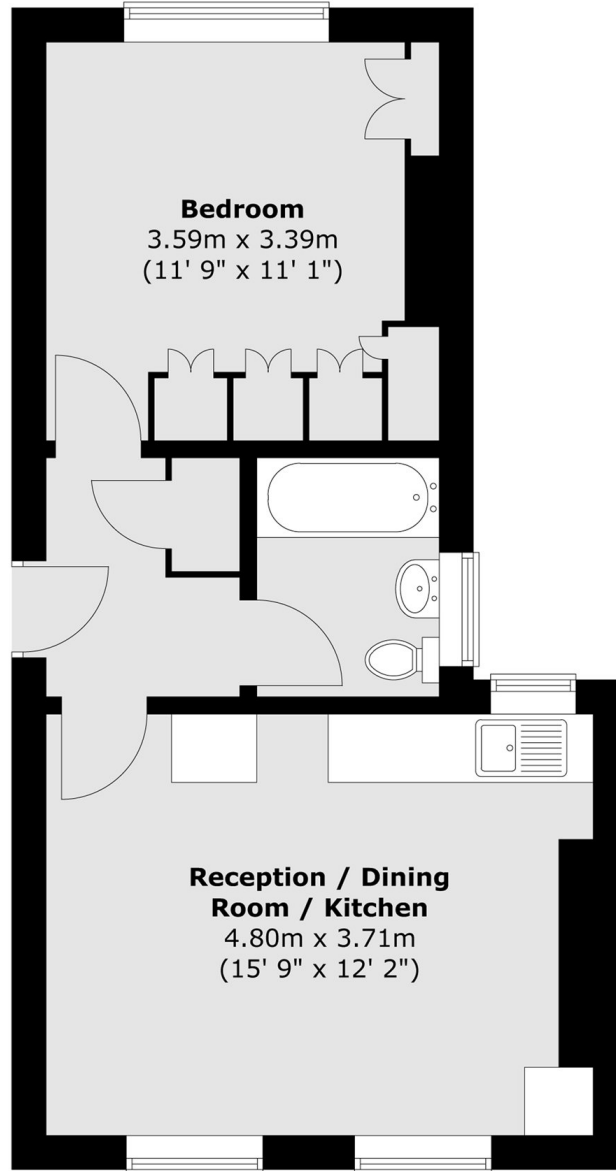
A well-presented one bedroom flat on Gloucester Drive, featuring an open plan kitchen and living space with plenty of natural light. The property offers a spacious feel with a practical layout ideal for comfortable living.

Gloucester Drive is close to Finsbury Park Station (Victoria and Piccadilly lines) and a range of independent shops, bars and cafés. It's also within easy reach of Finsbury Park, and other recreational spaces.

### Features

- One Bedroom Flat
- Share of Freehold
- Long Underlying Lease
- Open Plan Kitchen
- Period Property
- Chain Free

# Gloucester Drive, LONDON, N4



Total area (approx.) : 38.3 sq. m (412 sq. ft)