



Wharf Place, E2

£475,000

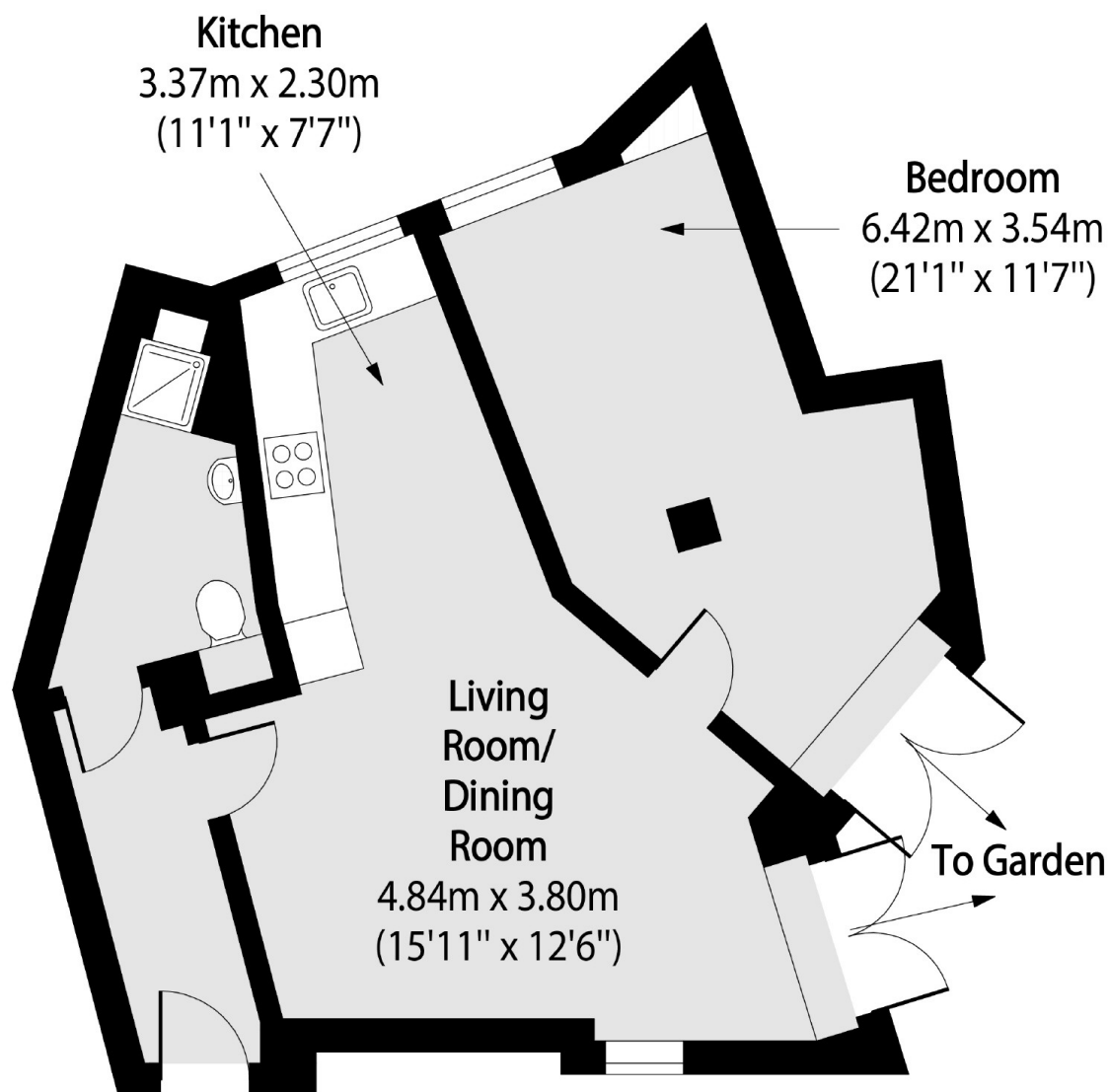
A one double bedroom apartment measuring in excess of 500 sq ft. With a private courtyard patio garden. This property offers semi open plan living with modern kitchen and bathroom. There is floor to ceiling windows and double doors in the living area leading out onto the garden. This property is chain free

Located at the bottom of Broadway Market, right on the Canal with an abundance of local amenities and London Fields Park nearby. Also ideally located a short walk away from Bethnal Green underground and London Fields Overground.

Features

- Chain Free
- Open Plan
- Private Courtyard Garden
- Close to Broadway Market
- Canal-side
- Modern Finish

Wharf Place, London, E2



Lower Ground Floor

Total area (approx): 48.98 sq m (527 sq. ft)