



# Tower Bridge Road

London, SE1

£3,500 per month  
(£807.69 per week)

A stylish two-bedroom apartment is available to rent within the Newham's Yard development. The property features two well-proportioned bedrooms, including a principal bedroom with en-suite, alongside a contemporary kitchen and a sleek family bathroom.

Residents benefit from a premium London lifestyle, with excellent transport links providing quick access across the city — from renowned universities and the West End to vibrant nightlife, green royal parks, and key financial districts.

**CHESTERTONS**



# Tower Bridge Road

London, SE1

- Two Bedroom
- Two Bathroom
- Furnished
- Modern



Perfectly positioned, the development offers a central yet quiet setting, bordered by tranquil gardens, mature trees, and open green spaces.

On-site amenities include a beautifully designed communal roof terrace on the fourth floor, as well as daytime concierge services. Newham's Yard is a vibrant mixed-use development, incorporating residential spaces, restaurants, office units, an independent gym, an aparthotel, and newly created public courtyards.

**Minimum Term:** 12 months  
**Deposit Required:** £0.00  
**Local Authority:** London Borough of Southwark  
**Council Tax Band:** D  
**EPC Rating:** B  
**Furnished**

| Score | Energy rating | Current | Potential |
|-------|---------------|---------|-----------|
| 92+   | A             |         |           |
| 81-91 | B             | 81 B    | 81 B      |
| 69-80 | C             |         |           |
| 55-68 | D             |         |           |
| 39-54 | E             |         |           |
| 21-38 | F             |         |           |
| 1-20  | G             |         |           |

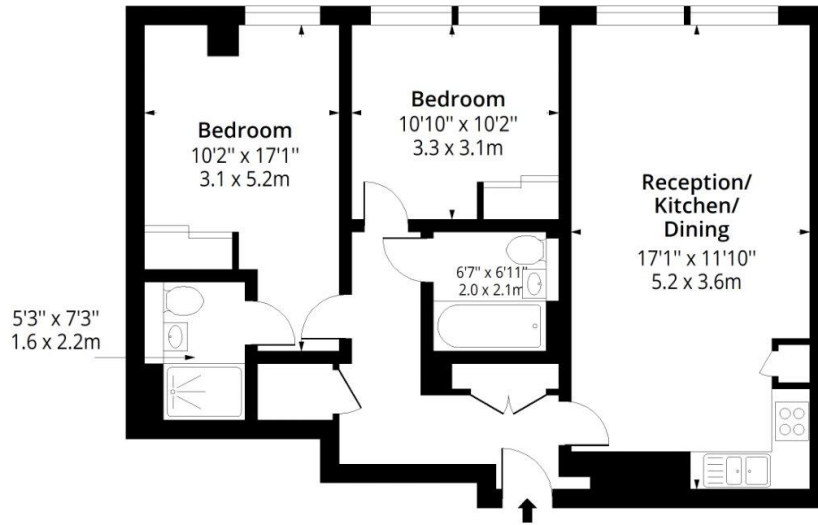
### *Chestertons Tower Bridge Lettings*

220 Tower Bridge Road  
 Tower Bridge  
 London  
 SE1 2UP  
 towerbridgelettingsusers@chestertons.co.uk  
 02073576911  
 chestertons.co.uk

Additional tenant charges apply (fees apply to non-AST tenancies only)  
 Tenancy Agreement Fee: £300  
 References per Tenant/Guarantor: £60  
 Inventory check (approx. £100 – £250 inc. VAT)  
[chestertons.co.uk/property-to-rent/applicable-fees](https://www.chestertons.co.uk/property-to-rent/applicable-fees)

# Tower Bridge Road SE1

Approx. Gross Internal Area 797 Sq Ft - 74.04 Sq M



## Fourth Floor

Floor Area 797 Sq Ft - 74.04 Sq M



Measured according to RICS IPMS2. Floor plan is for illustrative purposes only and is not to scale. Every attempt has been made to ensure the accuracy of the floor plan shown, however all measurements, fixtures, fittings and data shown are an approximate interpretation for illustrative purposes only. 1 sq m = 10.76 sq feet.

lpaplus.com

Date: 30/03/2026



This paper is 100% recyclable