



3 BEDROOM SEMI-DETACHED

The Trefonen



Note: Image for illustrative purposes only. Shown here alongside The Yrmywy.

This double-fronted three-bedroom semi-detached home is a new design to the Fletcher Homes collection, commanding corner plots and constructed with distinctive vernacular stone cladding.

GROUND FLOOR

- Light and spacious living room extending the full width of the house.
- French doors leading to the rear garden.
- Large cloakroom off the hallway.
- Large, open-plan living room.
- Useful understairs storage cupboard.

FIRST FLOOR

- Three substantial bedrooms.
- Large landing with 2 storage areas.
- Sizeable and modern main bathroom.
- Bedrooms 1 & 2 are both double-sized.
- Bedroom 1 has a fitted sliding wardrobe.
- Bedroom 3 is a perfect single room or study.

Phase 1 - Plots 37, 38 & 56 | Phase 2 - Plots 91 & 120

Sq. ft 893

Please note: Materials used vary on each home. Please ask the Sales Consultant for specific details.

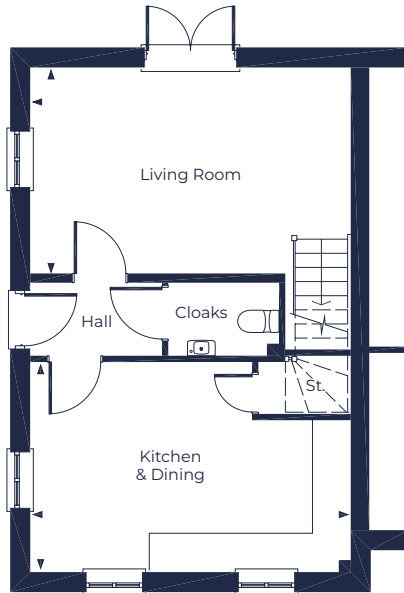




FLOOR PLAN

The Trefonen

www.fletcherhomes.co.uk



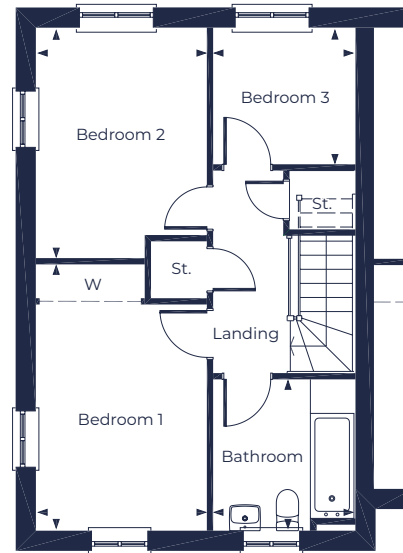
GROUND FLOOR

Living Room

5.10m x 3.27m (16'9" x 10' 9")

Kitchen & Dining

5.10m x 3.29m (16'9" x 10'10")



FIRST FLOOR

Bedroom 1

2.71m x 4.26m (8'11" x 14'0")

Bedroom 2

2.71m x 3.68m (8'11" x 12'1")

Bedroom 3

2.25m x 2.16m (7'5" x 7'1")

Bathroom

2.25m x 2.40m (7'5" x 7'10")

KEY | St. = Store | W = Wardrobe | CC = Hot Water Cylinder Cupboard

Please Note: Every Fletcher Homes' development is designed to be as individual as possible. External finishes and specifications may therefore vary on each property. Full details on the home of your choice are available from the Sales Department. This information sheet outlines the plans, specifications and layout for the development at the time of printing. The information has been prepared for guidance only and does not form part of an offer of a contract or warranty. All floor plans and artists impressions are only intended as a guide and should not be relied upon for precise measurements. All descriptions and dimensions are indicative and should not be used as the basis for purchasing furnishings, such as carpets or curtains, appliances or furniture. Such information is given in good faith and believed to be correct but any intending purchasers or lessees should not rely upon them as statements or representations of fact but satisfy themselves by inspection or otherwise as to the correctness of each of them. Any customer choices contained within the specification depend upon the construction stage reached when reservation is made. Fletcher Homes operates a policy of continual improvement and reserves the right to alter its designs, specifications or floor plans/layout and prices without prior notice. Should you require further clarification or confirmation of any matters contained on this information sheet, they should be raised through your solicitor or conveyor.