



Bear Estate Agents are understandably enthused to bring to the market, this deceptively spacious, beautifully presented and lovingly cared for three/four bedroom detached chalet which is able to boast a quite incredible plot with a rear garden measuring 125' in length, a rear driveway measuring 70' in length, a huge double garage measuring 37'10 x 16'4 and a quite remarkable master bedroom suite complete with walk in wardrobe and en suite shower room. All this whilst being tucked down a quiet and family-friendly cul de sac.

- Striking & Spacious Entrance Hall
- Living Room 13'5 x 10'8
- Ground Floor Bathroom 6'9 x 6'3
- Huge Rear Garden Approx 125' In Length
- Quiet & Family-Friendly Cul De Sac Location
- Open Plan Kitchen/Dining & Living Area 29'10 x 12'2 With Separate Utility Room 5'6 x 5'4
- Two Ground Floor Bedrooms, 12'11 x 9'8 With En Suite 6'3 x 5'4 Plus Bedroom Two 12'11 x 9'1
- Stunning First Floor Master Bedroom Suite 24'4 x 18'1 With En Suite 10'8 x 8'10 & Dressing Area 16' x 6'7
- Large Double Garage 37'10 x 16'4 Leading to Approx 70' Driveway Offering Parking For 6 - 8 Vehicles
- Walking Distance To Local Shops, Amenities & Rail Links Direct Into London

Elverston Side

Basildon

£675,000



Elverston Side



Internally the new owner will be greeted by the striking and spacious entrance hall, the staircase is central to the entrance hall and becomes the focal point of this area. The entrance hall allows access to all of the remaining living accommodation which offers a bathroom suite, two ground floor bedrooms, a living room and huge open plan kitchen, living & dining area.

The two ground floor bedrooms both come complete with feature bay windows. The larger of the two ground floor bedrooms measures 12'11 x 9'8, complete with en suite shower room, 6'3 x 5'4 whilst the second of the two ground floor bedrooms measures a further 12'11 x 9'1.

Across from the two bedrooms is the living room, again, complete with bay window. Measuring 13'5 x 10'8, if not used as a living room, given the rooms size, this could comfortably act as a further bedroom which would then make this a sizeable four bedroom home, the options are vast which is a great illustration of the versatility that this home possesses.

Worthy of special mention is the impressive kitchen, dining and living area which measures 29'10 x 12'2. The living area extends by a further 5'. This huge open plan space combines to provide the perfect environment in which to both entertain and relax. There are two sets of double doors off of the living space alongside multiple windows which together, combine to flood the area with natural light.

Off of the kitchen is the separate 5'6 x 5'4 utility room with space for washing machine and tumble drier plus an additional sink.

The main kitchen area measures 12'2 x 9'5 and offers an abundance of both worktop space and storage space alongside a wealth of fitted appliances.

Completing the ground floor living accommodation is the family bathroom suite, 6'9 x 6'3 and consisting of the bathtub with overhead shower, washbasin and W/C.

The entire first floor is dedicated to the quite incredible master bedroom suite complete with velux windows, large walk-in wardrobe and large en suite bathroom. The main bedroom area measures 19'3 x 18'1 which is incredibly sizeable and offers a wealth of space. There are wardrobe doors which open onto a huge walk-in wardrobe which measures 16' x 6'7. The en suite measures 10'8 x 8'10 and consists of the large walk-in shower, washbasin and W/C. The en suite is accessible via both the master bedroom suite and the walk-in wardrobe. The master bedroom is a fine feature within itself and provides a tranquil environment in which to both relax and unwind.

Externally this home continues to impress and excel with a quite extraordinary plot. The garden measures approximately 125' in length offering both side and rear access. To the bottom of the garden is a huge double garage which measures 37'10 x 16'4 with pitched roof and velux windows. Given its size, and of course, subject to planning, this could be converted into a detached annexe which is another fine feature within itself.

In front of the garage is a driveway which measures approximately 70' in length offering potential for driveway parking for between 6 - 8 cars. To the front of the driveway is additional parking for two further vehicles.

Plots of this unique size and shape truly are few and far between with this truly adopting the title of a tardis.

Situated toward the bottom of a quiet and family-friendly cul de sac there is

no through traffic yet the property remains just a short walk from local shops, amenities and rail links direct into London. The property further benefits from being just a stones throw from Pound Lane Recreation Ground.

Built in 2016, the property is only 10 years old and retains a stunning finish throughout, internal viewings come strongly recommended so that one can appreciate and acknowledge the time, care and attention to detail the current owners have invested into bringing this home as close to perfect as one could hope for.

Freehold.
Council Tax Band E.
Amount £2,624.49.

AML Checks - All buyers interested in purchasing a property through us are required to complete an Anti-Money Laundering (AML) check. A non-refundable fee of £30 + VAT per buyer in the transaction will apply. This fee must be paid before proceeding with the purchase.

Striking & Spacious Entrance Hall

Incredible Kitchen/Living/Dining Area

29'10 x 12'2

Utility Room

5'6 x 5'4

Living Room

13'5 x 10'8

Ground Floor Bedroom One

12'11 x 9'8

En Suite

6'3 x 5'4

Ground Floor Bedroom Two

12'11 x 9'1

Ground Floor Bathroom

6'9 x 6'3

Incredible First Floor Master Bedroom Suite

24'4 x 18'1

En Suite Bathroom

10'8 x 8'10

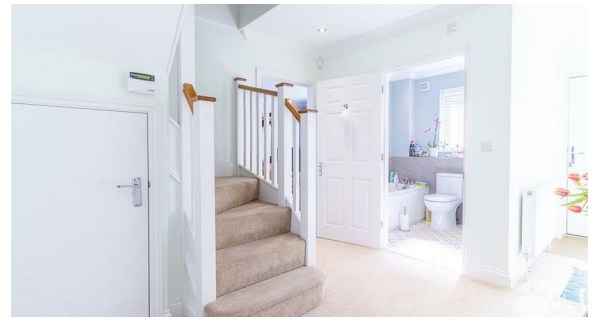
Walk In Dressing Room

16' x 6'7

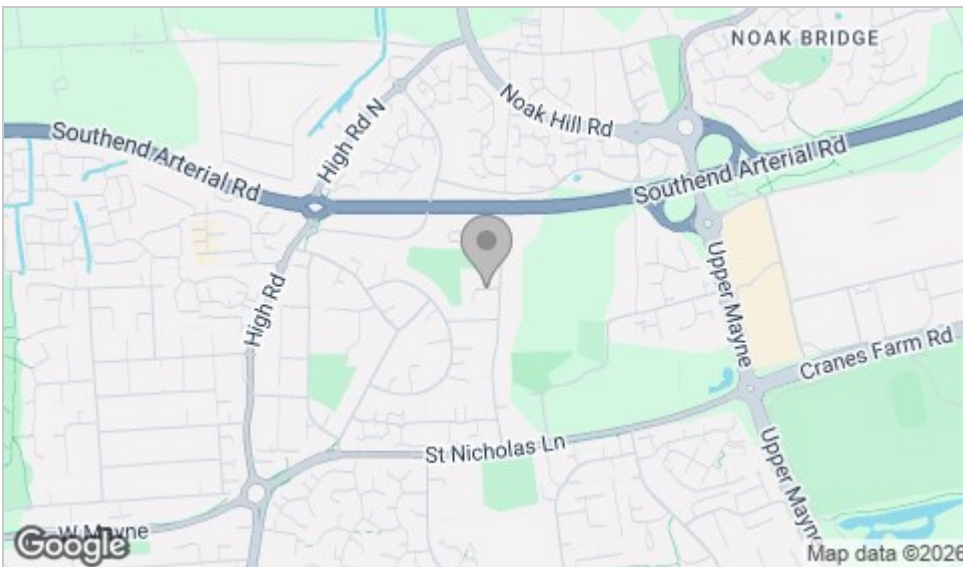
Large Approx 125' Rear Garden



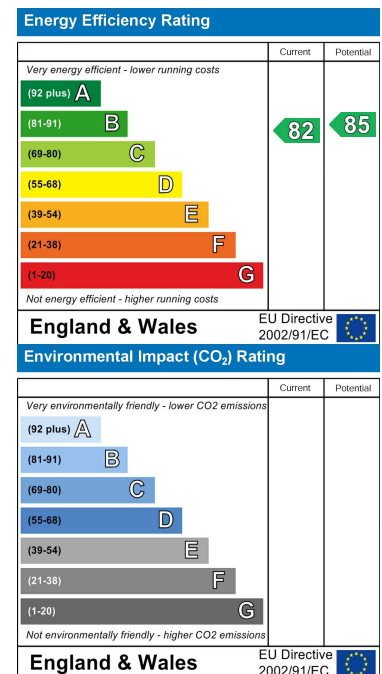
Floor Plan



Area Map



Energy Efficiency Graph



Viewing

Please contact our Basildon Office on 01268 661215 if you wish to arrange a viewing appointment for this property or require further information.

These particulars, whilst believed to be accurate are set out as a general outline only for guidance and do not constitute any part of an offer or contract. Intending purchasers should not rely on them as statements of representation of fact, but must satisfy themselves by inspection or otherwise as to their accuracy. No person in this firm's employment has the authority to make or give any representation or warranty in respect of the property.

351 Clay Hill Road, Basildon, Essex, SS16 4HA

Office: 01268 661215 basildon@bearestateagents.co.uk <http://www.bearestateagents.co.uk/>