



BLANDFIELD ROAD, SW12

£1,150,000

- Four Bedrooms
- End of Terrace
- Private Garden
- Nightingale Triangle
- Modern Finish Throughout
- Energy Rating: B





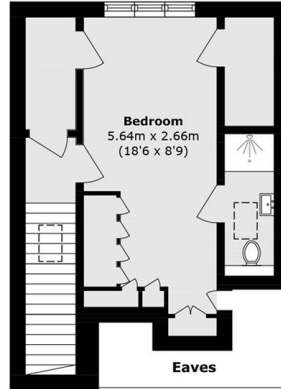
## ABOUT THE HOME

A superb end of terrace family home located in the highly sought after Nightingale Triangle of Balham. This wonderful property benefits from a spacious kitchen living space, downstairs W/C and large private garden with additional side access. On the first floor there are three bedrooms and a family bathroom as well as a further bedroom with an en-suite in the loft.

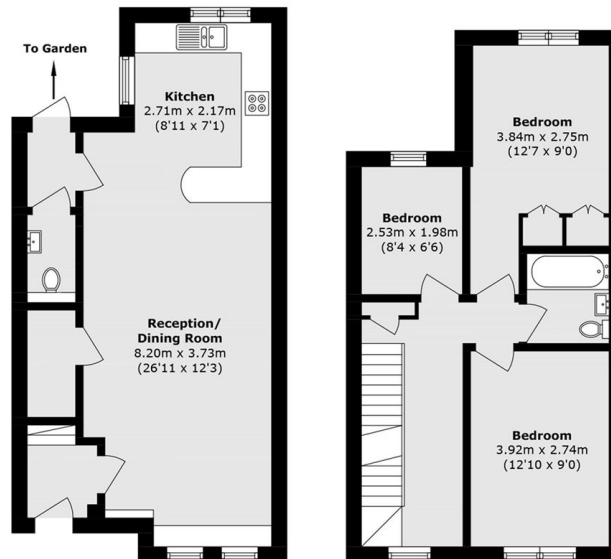
Located on Blandfield Road within the Nightingale Triangle this property is well situated for easy access to Clapham South underground station as well as Balham mainline and underground stations. Both Wandsworth Common and Clapham Common are also within easy reach.







**Second Floor**



**Ground Floor**

**First Floor**

Total area (approx.): 116.9 sq. m (1258.3 sq. ft)  
(Excluding Eaves)

**JACKSONS BALHAM**

8-11 Balham Station Road,  
London, SW12 9SG  
Sales: 020 8675 6555  
Lettings: 020 8675 6565

Energy Rating: We aim to make our particulars both accurate and reliable. However they are not guaranteed; nor do they form part of an offer or contract. If you require clarification on any points then please contact us, especially if you're traveling some distance to view. Please note that appliances and heating systems have not been tested and therefore no warranties can be given as to their good working order.