



Bishops Way, Winnington

Offers Over £250,000





Turnkey homes in Winnington that offer this level of finish, location and lifestyle are exactly what buyers are searching for right now.

This one is ready for you to move straight into and start enjoying from day one.

Three-bedroom homes in Winnington that combine space, flexibility and a garden like this are exactly what buyers are searching for right now and this one delivers on all three.

Positioned within one of the area's most popular residential settings, this well-presented three-bedroom semi-detached home offers the perfect opportunity for first-time buyers, young families or those looking for a home that can adapt over time.



From the moment you step inside, the home offers a modern, well-maintained finish that immediately feels both welcoming and practical for everyday life.

The main living space is generous in size, creating a room where the whole family can come together comfortably, whether that's relaxed evenings in front of the TV, hosting friends, or creating a space that naturally becomes the heart of the home.

It's a layout that allows for flexibility, giving you room to style and use it in a way that suits your lifestyle.

"The home that just keeps giving, from room to room."

To the rear, the kitchen diner continues the same modern aesthetic and is designed with both functionality and social living in mind. There is ample space for a dining table, making it ideal for everything from family meals to hosting friends nights or a glass (or two) of wine in the evening.

Positioned overlooking the rear garden, the kitchen offers a real lifestyle advantage, allowing you to keep an eye on children playing outside while preparing meals, while still feeling connected to the rest of the home. It's a space that works just as well for busy weekday routines as it does for more relaxed, social occasions.



Upstairs, the property continues to impress with three well-proportioned bedrooms, each offering a practical and comfortable layout.

The two main bedrooms are generous doubles, providing plenty of room for furnishings without compromise ideal for both families and those wanting guest accommodation or additional space to grow into. The principal bedroom benefits from a stylish ensuite shower room with double shower enclosure, finished in a contemporary style that flows seamlessly with the rest of the home.

The third bedroom is a versatile and well-sized single, offering flexibility depending on your needs. Whether used as a nursery, home office, dressing room or child's bedroom, this room allows the home to adapt as your lifestyle evolves, something increasingly important for buyers planning ahead.

The family bathroom mirrors this same modern finish, creating consistency throughout.

The overall feel upstairs mirrors the rest of the home... modern, well-kept and ready to move straight into, removing the need for any immediate work and allowing you to simply settle in.



“Imagine, a home that grows with you and your family.”



Externally, the property offers a standout feature in the form of its large south-east facing rear garden, enjoying sunlight throughout the day. Designed for both enjoyment and practicality, the space allows everyone to use it at once without compromise. A generous lawn provides the perfect area for summer days, while a dedicated barked section creates an ideal children's play area.

To the rear, a raised decked seating area with pergola offers a fantastic setting for alfresco dining, entertaining or unwinding in the evening sun, making this garden just as suited to social occasions as it is to everyday family life. To the front, a two-car driveway ensures convenient off-road parking, an increasingly valuable feature for buyers in Northwich.



“Step outside and the sense of space continues from inside to out.”





This is a home designed not simply for now, but for the years ahead, adaptable, spacious and perfectly positioned for life to change around it.

Not just a house to live in, but a home to grow into.

Why Winnington?

Winnington is one of the most popular residential areas in Northwich, particularly for families seeking modern homes with access to green space and strong community surroundings. The area is known for its well-planned developments, family-friendly environment and proximity to both countryside and town amenities. Its continued demand makes it a consistently sought-after location for buyers looking in Northwich and the wider Cheshire area. Families gravitate to this area as the sense of community is strong, and yet the countryside escapism alongside convenience are both easily accessible. For first-time buyers, it provides an opportunity to step into a location that continues to see strong demand and long-term appeal.

Its proximity to Northwich town centre ensures that everyday amenities, shopping and dining are always within easy reach.



“A home that is not only positioned on a prime plot, but is also nestled within the heart of the community.”



Local Life in Warrington

Living in Warrington means enjoying a lifestyle that balances convenience with leisure. Nearby green spaces such as Anderton Nature Park provide the perfect setting for outdoor time, while Destination Padel offers a growing hub for fitness and social activity.

Independent spots like Eleven are ideal for coffee and catching up with friends, adding to the community feel that makes the area so appealing.

For commuters, the location provides strong links to Chester, Manchester and Liverpool, making it a practical base for both work and lifestyle.



“Whether you are looking to escape the hustle and bustle life can bring, or the ease of access to it, you can have it all here.”



9 Bishops Way, Winnington

Approximate Gross Internal Area = 75.72 sq.m / 815 sq.ft

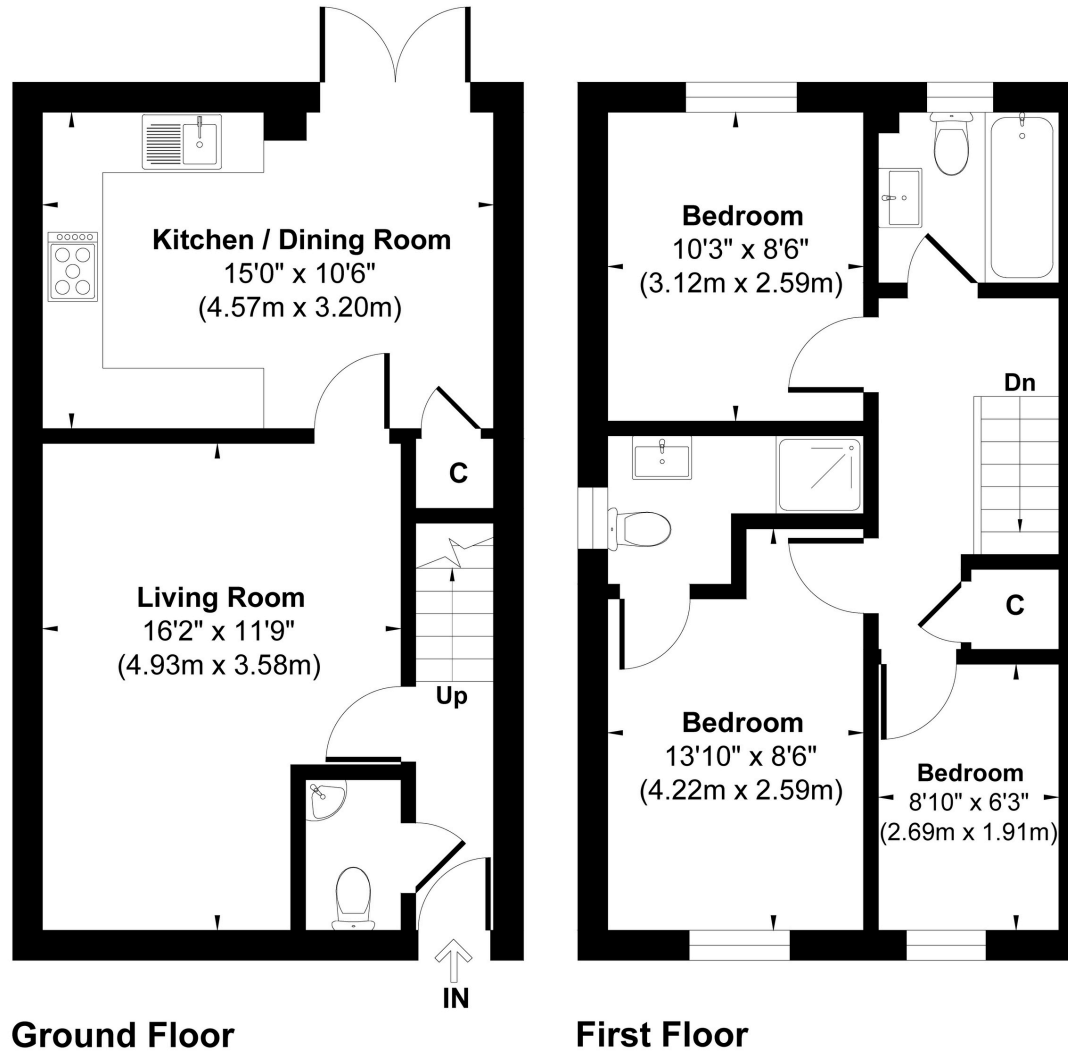


Illustration for identification purpose only, measurements approximate and not to scale.



Amy Walley

01606 531338 | 07749 163356 | amy.walley@theagencyuk.com



@thatpropertygirlamy