



**Victoria Bolt**  
estate agents POWERED BY **exp** UK

# Pym Street, Plymouth

Guide Price £300,000

🛏️ 4 🚿 2 🚗 2



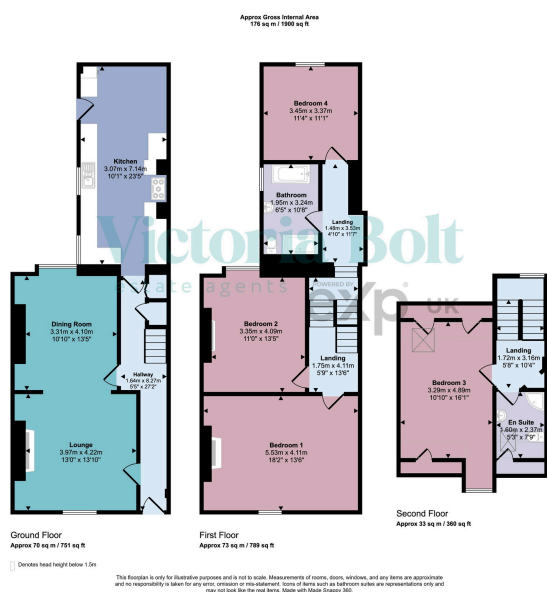
- Substantial Victorian terraced home for sale with no onward chain
- Four well-proportioned bedrooms over two floors
- Character features including fireplaces, coving & ceiling roses
- Generous kitchen with ample space
- Permit parking to the front with potential rear parking
- Approx. 1,900 sq ft of accommodation
- Two spacious reception rooms
- Two bathrooms for added convenience
- Private, low-maintenance courtyard garden
- Convenient location close to amenities and city centre



NO ONWARD CHAIN. A substantial Victorian terraced home on Pym Street offering approximately 1,900 sq ft of spacious and versatile accommodation. This impressive property features four bedrooms arranged over two upper floors, two reception rooms with attractive period features, and two bathrooms, making it ideal for growing families or those needing flexible living space.

The ground floor provides a welcoming entrance hall, a generous living room, a separate dining room perfect for entertaining, and a well-sized kitchen. Upstairs, three double bedrooms and a family bathroom occupy the first floor, while the top floor offers a further spacious bedroom and an additional bathroom.

Externally, the property benefits from a private, low-maintenance and potentially amenity space, and the front local character,



Energy Efficiency Rating		Current	Potential
Very energy efficient – lower running costs			
(92 plus)	<b>A</b>		
(81-91)	<b>B</b>		
(69-80)	<b>C</b>		<b>74</b>
(55-68)	<b>D</b>	<b>60</b>	
(39-54)	<b>E</b>		
(21-38)	<b>F</b>		
(1-20)	<b>G</b>		
Not energy efficient – higher running costs			
<b>England &amp; Wales</b>		EU Directive 2002/91/EC	