



## Virginia Close, KT3

£495,000

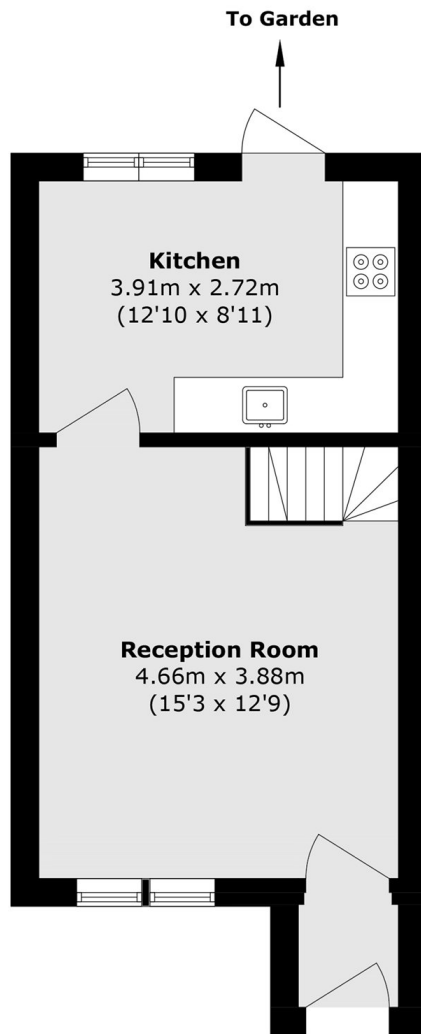
A good sized light and bright two bedroom home in a great location. The property offers plenty of space and light throughout with two double rooms, a good sized garden and off street parking. There is the opportunity to purchase a small bit of land at the back to the house to make the garden bigger.

Virginia Close is a quiet cul-de-sac located just off Kingston Road. Kingston Town Centre and New Malden Town Centres are close by with plenty of shops, cafes and restaurants. New Malden and Norbiton Stations are also close by with plenty of bus routes into the city

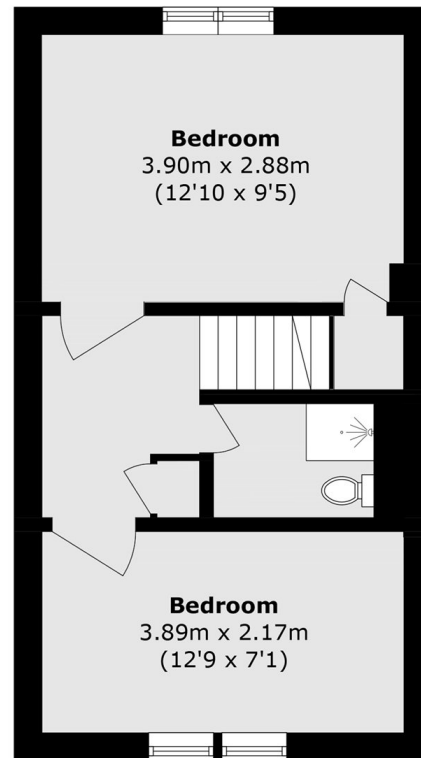
### Features

- Terraced House
- Two Double Bedrooms
- Private Garden
- Great Location
- Off Street Parking
- Chain Free

# Virginia Close, New Malden, KT3



**Ground Floor**



**First Floor**

Total area (approx.): 60.0 sq. m (645.8 sq. ft)