



## Queen's Gate, SW7

£692 Per week

A well-proportioned one bedroom apartment located on the lower ground floor of a red-brick Victorian townhouse, positioned at the park end of Queen's Gate and within a short distance of Hyde Park.

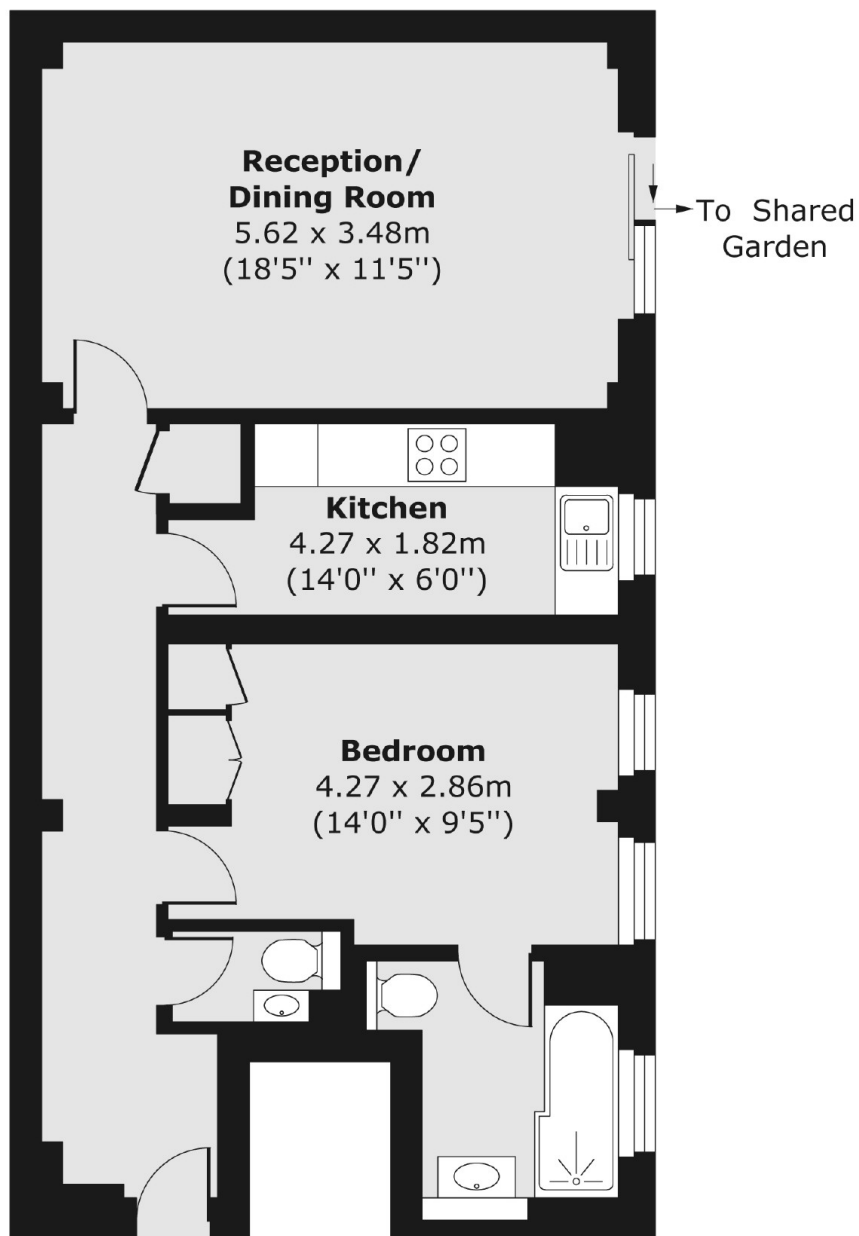
This red-brick Victorian townhouse is situated at the park end of Queen's Gate, within close proximity to Kensington High Street, Gloucester Road, and Knightsbridge, offering access to a wide range of international shops and restaurants.

### Features

- Large Double Bedroom
- Separate Kitchen
- Wooden Floors Throughout
- Patio Garden
- Recently Refurbished
- Close To Hyde Park

# Queen's Gate, London, SW7

## Lower Ground Floor



Total area (approx.) 57.48 sq. m (619 sq. ft)