

Luxury+Prestige

PREMIER HOUSE

29A BLAKE HILL CRESCENT, LILLIPUT, POOLE, BH14 8QW

















TAKE A STEP INSIDE



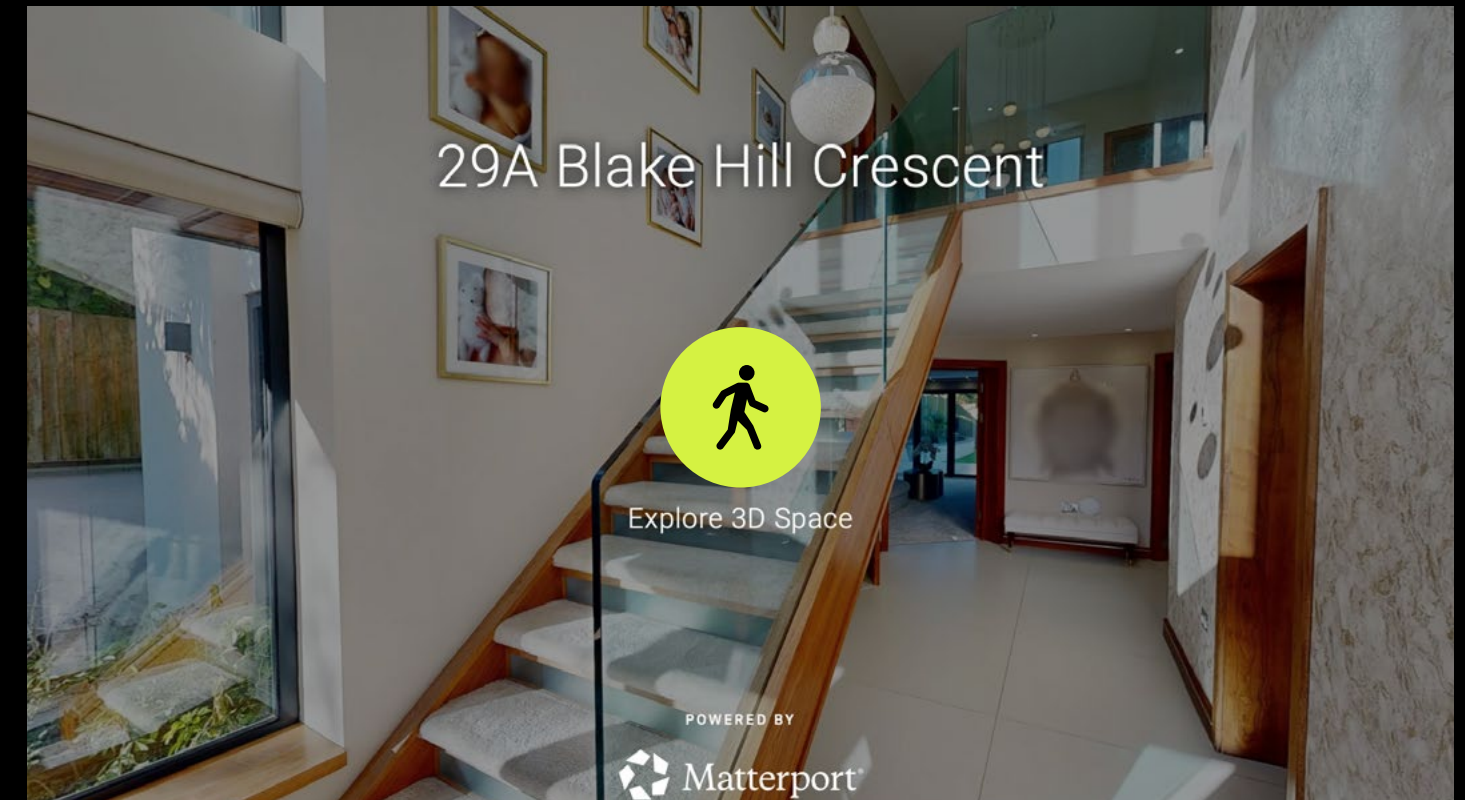
Simply click on the thumbnail above to let one of our team give you a guided tour of the highlights.

If you are longing for a more in-depth explore at your own pace, then head across the page to our fully interactive 3D tour.

vimeo

Can't wait to view in person?

All of our properties feature a professionally produced one minute video, personally introduced by a member of our team as well as a fully interactive 3D tour.



Simply click on the thumbnail above to take a step inside and explore this beautiful home.

Matterport™

This fully immersive experience allows you to 'click and drag' your way through the property at your own pace. It is best viewed on a desktop screen or in landscape mode on your smartphone or tablet.

Floorplan

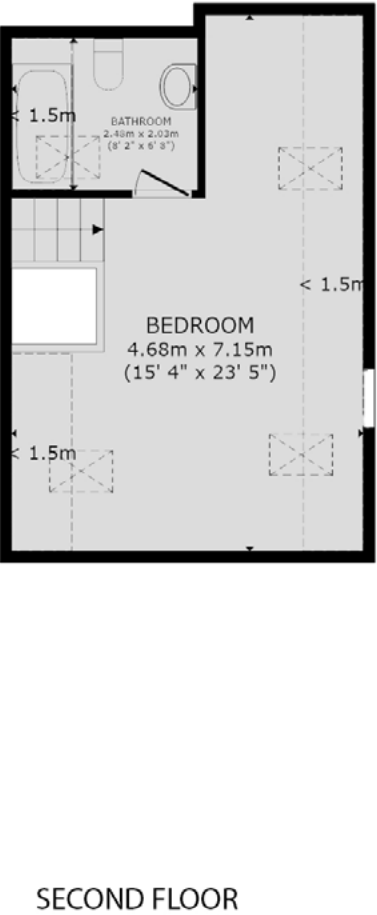
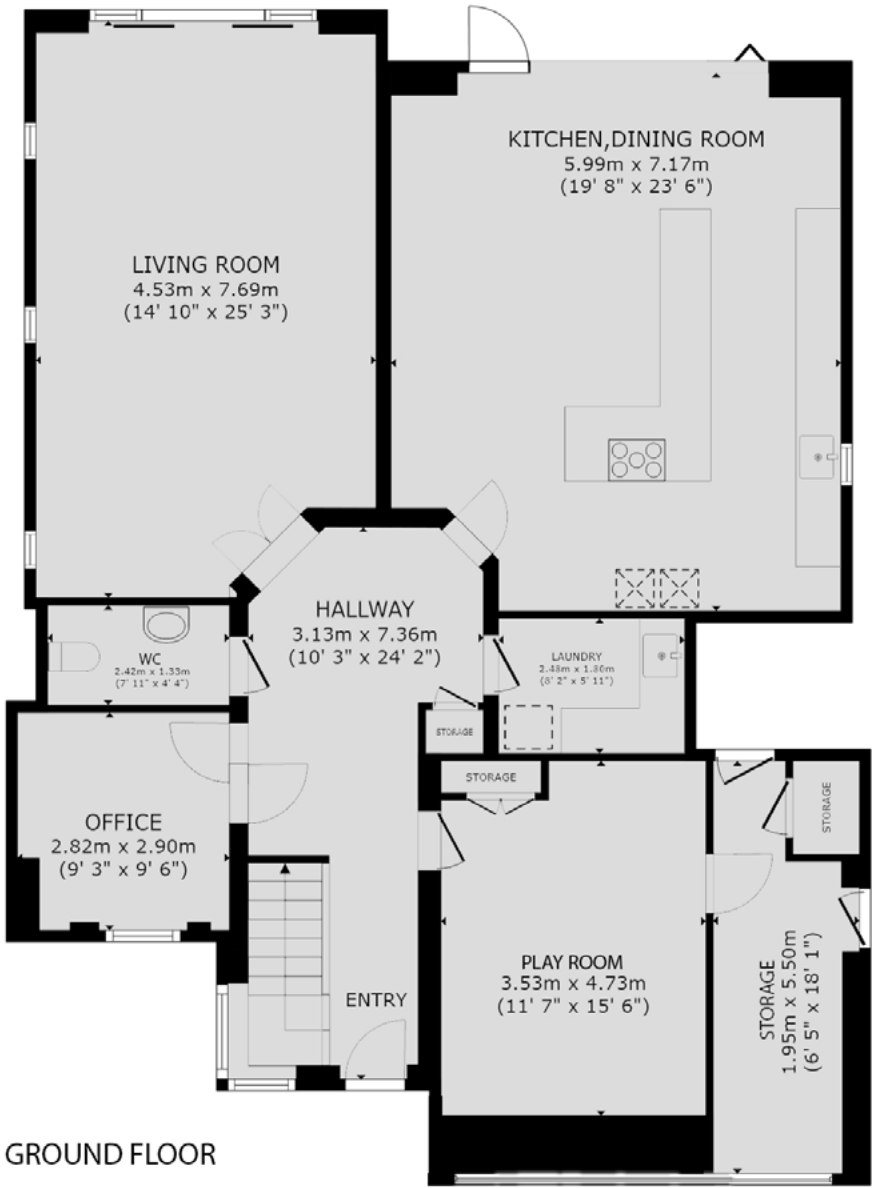
Premier House, 29A Blake Hill Crescent
Lilliput, Poole, BH14 8QW

GROSS INTERNAL AREA

House:

Ground Floor:	1,440 sq. ft / 134 m ²
First Floor:	1,527 sq. ft / 142 m ²
Second Floor:	250 sq. ft / 23 m ²
Storage:	101 sq. ft / 9 m ²
Total:	3,318 sq. ft / 308 m ²

Sizes and dimensions are approximate, actual may vary.



Summary

Premier House is located in an exclusive road where some of the best houses in Lilliput can be found.

With built form extending to circa 3,300 sq ft it offers the luxury of space although it has been the subject of an extensive program of works including programmable lightning and home automation by Control 4 and improvements by the current owners.

There is a total of four generous bedrooms and bathrooms and the opulent principal suite even includes a walk-in closet. The first floor study could double up as a potential bedroom five and adds to the flexible layout.

Downstairs there is a choice of receptions, a home office and a simply stunning contemporary kitchen diner complete with centre island and banquette seating for up to eight people. This especially impressive room connects to the rear garden and private sun terrace via large format bifold doors. Level gardens with a large lawn are rare in the area so this is a stand out feature.

In addition to the outdoor living space on the terrace there is a specially constructed garden room which is fitted out as a private cinema and / or entertaining space. The photographs of the interior paint a picture of the exceptional standard of interior design throughout.

Details

Guide Price:	£1,995,000		
Tenure:	Freehold		
Lease Length:	N/A		
Maintenance:	N/A		
Ground Rent:	N/A*		
	* Ground Rents can increase over time and advice should always be sought from your solicitor before exchange of contracts.		
Stamp Duty:	Main Home	£153,150**	
	Additional Home	£252,900**	
	** based on guide price		
Local Authority:	BCP Council		
Council Tax:	Band G		
	2025/2026	£3,758.23pa***	
	*** Amount shown is for a main home, please seek advice for additional home.		
Services:	Mains gas, electricity, water and drainage		

Key features

- + Prestigious location
- + Main accommodation over two floors
- + Beautiful reception hall
- + Stunning interior
- + Four / five bedrooms
- + Ideal for entertaining
- + Choice of receptions
- + Contemporary kitchen with centre island & banquette seating
- + Wonderful level garden
- + Garden studio / cinema

Our team



Steve Isaacs
Director

07970 878106
steve@luxuryandprestige.com



David Chissell
Director

07795 835647
david@luxuryandprestige.com



Harriet Towning
Head of Sales

07809 908718
harriet@luxuryandprestige.com



Adrianna Ciereszko
Photographer

01202 007373
adrianna@luxuryandprestige.com



Ryan Horan
Land & New Homes

07512 196688
ryan@luxuryandprestige.com



Thomas Powner
Residential Sales

07437 491094
tom@luxuryandprestige.com



Valentina Morana
Residential Sales

07366 799790
valentina@luxuryandprestige.com



Joanne Bound
Search Agent

01202 007373
jbound@luxuryandprestige.com

Get in touch

In person:	28A Haven Road Canford Cliffs Poole BH13 7LP
By phone:	01202 007373
By email:	info@luxuryandprestige.com
Online:	luxuryandprestige.com
Facebook:	facebook.com/luxuryandprestige
Instagram:	@luxuryprestigerealty
Property ref:	1139
Published:	February 2026



Important notice
Luxury and Prestige Realty Ltd, its clients and any joint agents give notice that 1: They are not authorised to make or give any representations or warranties in relation to the property either here or elsewhere, either on their own behalf or on behalf of their client otherwise. They assume no responsibility for any statement that may be made in these particulars. These particulars do not form part of any offer or contract and must not be relied upon as statements or representations of fact. 2: Any areas, measurements or distances are approximate. The text, photographs and plans are for guidance only and are not necessarily comprehensive. It should not be assumed that the property has all necessary planning, building regulation or other consents and Luxury and Prestige have not tested any services, equipment or facilities. Purchasers must satisfy themselves by inspection or otherwise.

Luxury+Prestige

luxuryandprestige.com