



Summerlee Avenue, N2

£4,500 Per calendar month

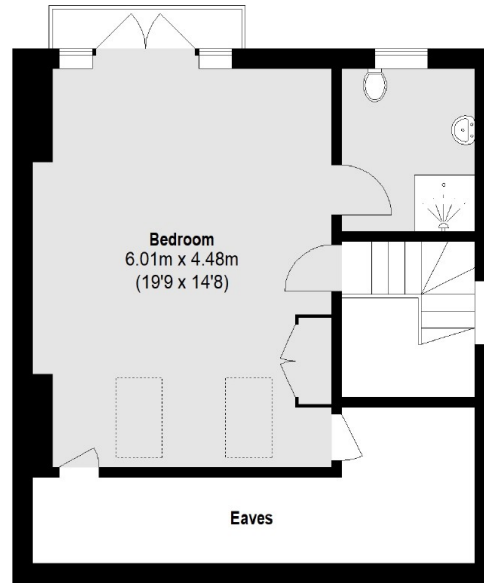
A well presented four bedroom house set on a beautiful residential street in East Finchley. Arranged over three floors with a double reception room, separate kitchen, three bathrooms, garden with lawn and off street parking.

Located within the catchment areas for local schools, the property is ideal for a family seeking a long tenancy and easy access to East Finchley Tube station

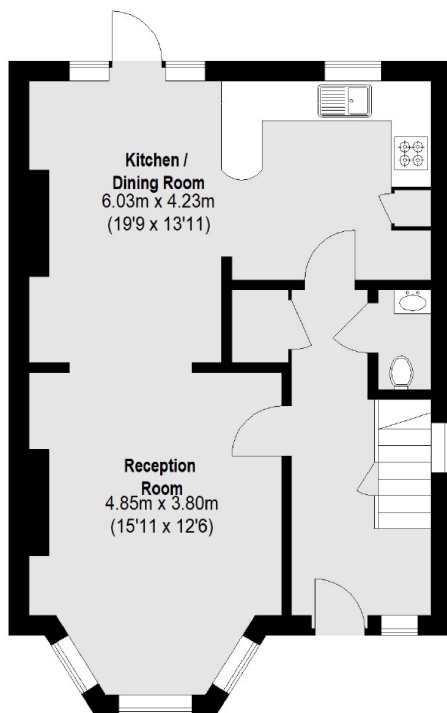
Features

- Four Bedroom House
- Garden
- Separate Kitchen
- Wood Floors
- Three Bathrooms
- Off Street Parking

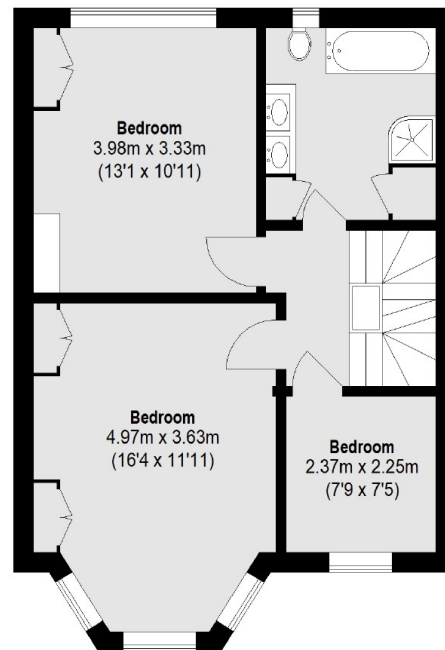
Summerlee Avenue, London, N2



Second Floor



Ground Floor



First Floor

Total area (approx.): 140.19 sq. m (1509 Sq. ft)
(Excluding Eaves)