



1602 10 Park Drive, London, E14 9GD

Asking price £500,000

 0  1  1  B

Experience elevated contemporary living in this bright and beautifully crafted studio apartment, set on the 15th floor of the iconic Ten Park Drive in the heart of Canary Wharf. Perfectly formed across 47.5sqm (511sqft), this spacious studio stands out with its floor to ceiling windows, flooding the interior with natural light and creating an airy, luxurious atmosphere.

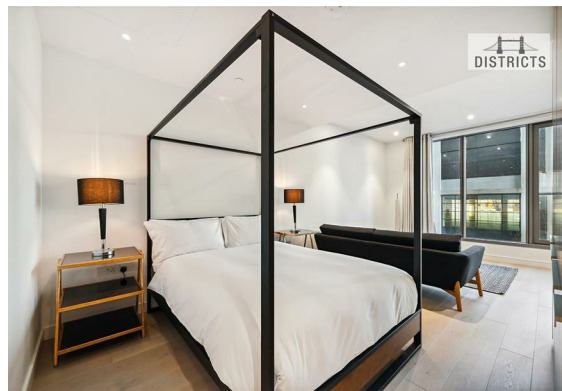
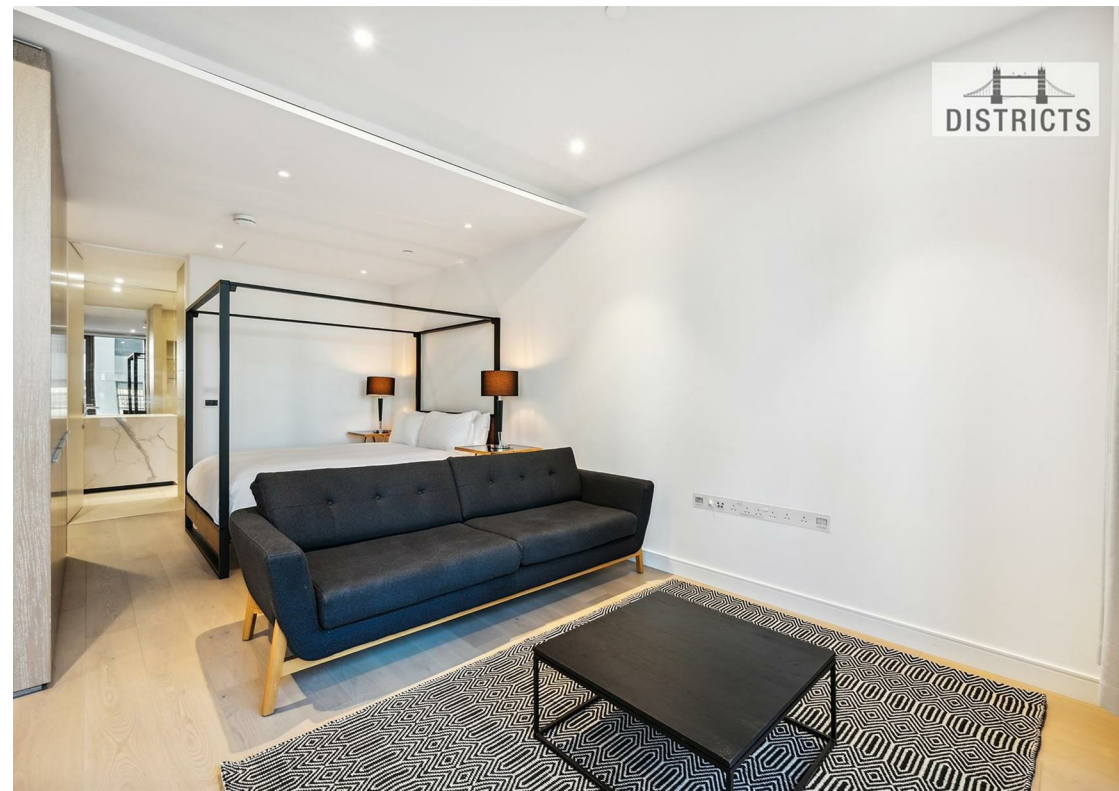
A rare highlight of this property is the inclusion of two Third Space Health Club memberships (gym & swim), giving you access to one of London's most sought after wellness facilities—an exceptional benefit for fitness lovers. Inside, the apartment is meticulously designed with high quality natural materials and sophisticated finishes. The open plan layout offers flexible living, dining, and sleeping zones, with clever design ensuring excellent flow throughout. Storage is plentiful, with fitted wardrobes and additional entrance cupboards providing practical convenience. A sleek and modern bathroom completes the home, offering a calming retreat after a long day.

Located within the secure, 24/7 patrolled Canary Wharf Estate, residents enjoy peace of mind along with a premium lifestyle offering. The building provides an impressive selection of amenities, including a 24 hour concierge, a beautifully landscaped Sky Garden, an elegant residents' lounge, and a dedicated media/cinema room—ideal for downtime, working remotely or entertaining guests.

Leasehold: 235 years
Ground rent amount: Approx. £450 p/a
Review period: Ask agent
Service charge amount: Approx. £6277 p/a
Review period: Ask Agent
Council tax band: E – Tower Hamlets

Electricity supply – Mains | Heating & Cooling – Mains | Water Supply & Sewerage – Mains | Lift Access | Cladding: EWS1 Cert. Ask Agent | Parking: No

To check broadband and mobile phone coverage please visit Ofcom
To check planning permission please visit Tower Hamlets Council Website, Planning & Building Control

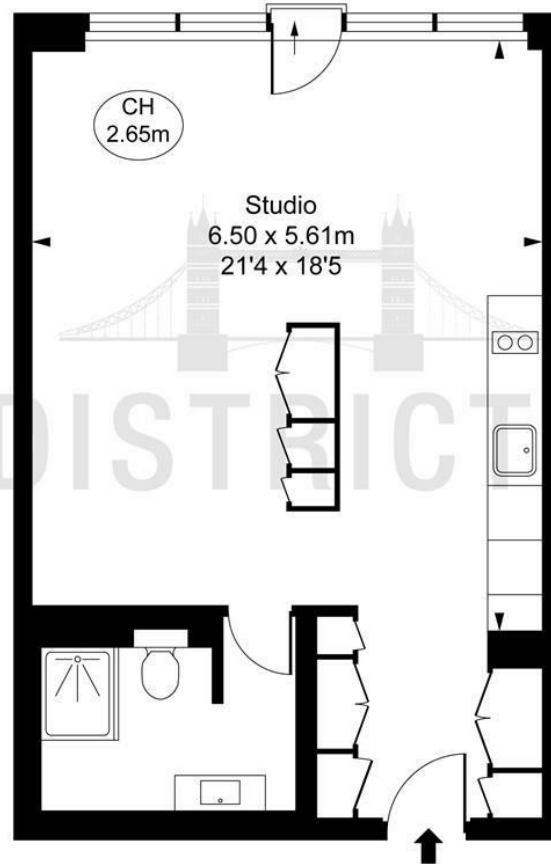





Park Drive, E14
 Approximate Gross Internal Area
 47.50 sq m / 511 sq ft



(CH = Ceiling Heights)



This plan is not to scale. It is for guidance and not for valuation purposes.
 All measurements and areas are approximate only, and have been prepared in accordance with the current edition of the RICS Code of Measuring Practice.
 © Fulham Performance

Energy Efficiency Rating		
	Current	Potential
Very energy efficient - lower running costs		
(92 plus) A		
(81-91) B	85	85
(69-80) C		
(55-68) D		
(39-54) E		
(21-38) F		
(1-20) G		
Not energy efficient - higher running costs		
England & Wales	EU Directive 2002/91/EC 	

These particulars, whilst believed to be accurate are set out as a general outline only for guidance and do not constitute any part of an offer or contract. Intending purchasers should not rely on them as statements of representation of fact, but must satisfy themselves by inspection or otherwise as to their accuracy. No person in this firm's employment has the authority to make or give any representation or warranty in respect of the property.