



JAMES PYLE^{CO.}

Westend Cottage, West End, Avening, Gloucestershire, GL8 8NE

Detached Cotswold stone cottage
Outstanding position with superb views
4 bedrooms
Bathroom and 2 en-suites
2 reception rooms
Large kitchen/dining room
Landscaped southerly gardens
Garage
Peaceful edge of village setting



01666 840 886
jamespyle.co.uk



The Barn, Swan Barton, Sherston, Wiltshire, SN16 0LJ
James Pyle Ltd trading as James Pyle & Co. Registered in England & Wales No: 10927906

Guide Price: £875,000

Approximately 2,310 sq.ft excluding garage

‘Peacefully positioned on the edge of Avening commanding an elevated position with outstanding views, a charming detached Cotswold stone 4-bedroom cottage’



The Property

Westend Cottage is a substantial detached period home, beautifully positioned in an elevated setting on the edge of Avening, offering breathtaking views across the Gatcombe Valley. Constructed of attractive natural Cotswold stone, this cottage is presented to an exceptional standard throughout, having been thoughtfully updated and remodelled in modern times. The deceptively spacious accommodation extends to 2,310 sq.ft., arranged over two floors, where every window frames the stunning, far-reaching views.

The ground floor opens to an entrance hall, complete with a convenient cloakroom. Double oak doors open into a generously sized, triple-aspect living room, featuring a bespoke stone-carved fireplace with an inset wood-burning stove and new bi-folding doors that connect seamlessly to a charming terrace. At the heart of the home lies a magnificent kitchen/dining room, benefiting from underfloor heating. The fitted kitchen boasts Quartz work surfaces, a large central breakfast bar, a walk-in larder, and a range of built-in appliances including an

electric Range cooker and water softener. A further reception room provides flexible living space, alongside a utility room thoughtfully designed with ample built-in storage.

Ascending to the first floor, a generous landing offers space for a study or home office. There are four well-proportioned double bedrooms, two of which include excellent en-suite facilities, while the principal bedroom benefits from fitted wardrobes. The stylish family bathroom features a shower over the bath.

Outside, the gardens have been extensively relandscaped to embrace the south-facing aspect and capture the sun throughout the day, arranged across three principal levels. A side terrace, accessible from the living room, features a front gate leading to the lane. Stone steps ascend to a private top rear lawn, while a new decking area extends to higher elevations, backing onto the fields and offering superb views across the valley. Opposite the cottage across the quiet lane, is a detached garage with adjoining off-road parking. The garage is equipped with power and boasts a high vaulted ceiling, offering potential for conversion, subject

to planning.

Situation

The cottage enjoys a peaceful and picturesque position on the edge of Avening set down a quiet no-through lane with a host of scenic walks available straight off the doorstep including the Macmillan Way Path. Avening has a public house, a village hall, an excellent primary school and parish Church. The property is located on the northern edge of Avening within walking distance to the well-known Minchinhampton Golf Club, boasting two 18 hole courses, as well as Gatcombe Park, the home of The Princess Royal and Gatcombe Horse Trials. Avening is conveniently located between Tetbury and Nailsworth, both of which have an excellent range of facilities including shops, public houses and primary schools with a secondary school at Tetbury. There is an excellent choice of both public and private schools within the area including Beaudesert Park near Minchinhampton. Also within the local area are a number of places of interest including the world famous Westonbirt Arboretum with some 18 thousand trees and shrubs in approximately 600

acres of landscaped grounds, and over 600 acres of National Trust common land at Minchinhampton.

Additional Information

The property is Freehold with oil-fired central heating, shared private drainage, mains water and electricity. The property is located within the Cotswold Area of Outstanding Natural Beauty. Ultrafast broadband is available. Information taken from the Ofcom mobile and broadband checker, please see the website for more information and mobile phone coverage. Cotswold District Council Tax Band G.

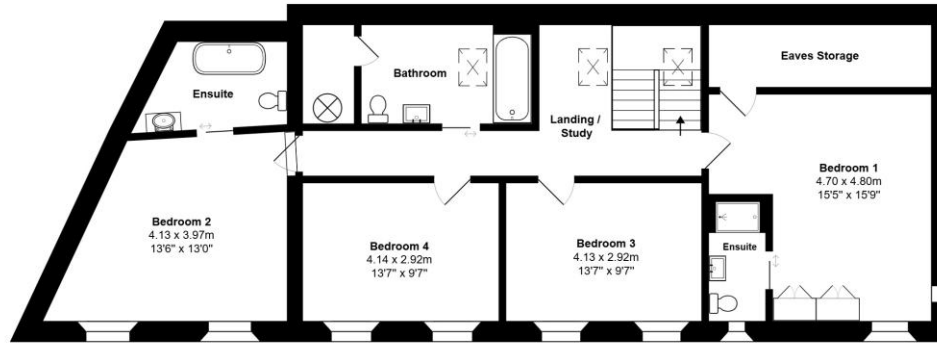
Directions

From Tetbury, take the B4014 to Avening. As the hill starts to drop down into the village, take the first left hand lane and turn left at the end onto West End. Locate the property on the left hand side.

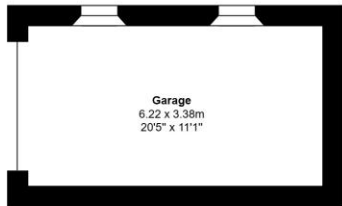
Postcode GL8 8NE

What3words: ///romantics.device.dilute



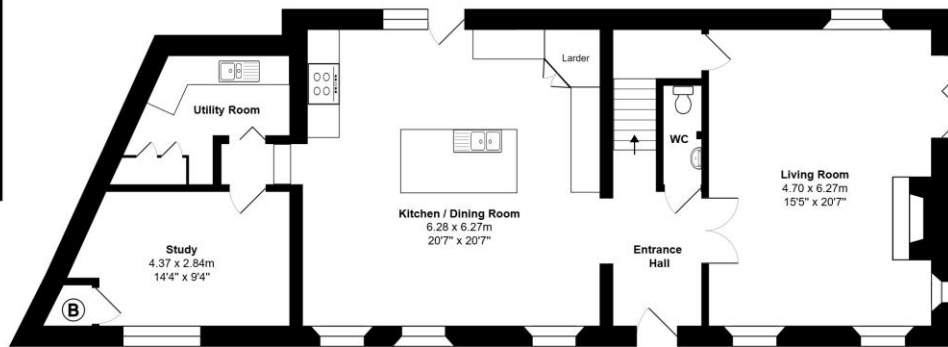


First Floor

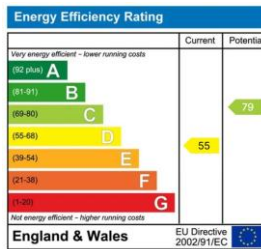


Total Area: 214.6 m² ... 2310 ft² (excluding garage)

All measurements are approximate and for display purposes only



Ground Floor



James Pyle Holdings Ltd and any parties they are acting for hereby give notice that these details are for guidance only and cannot guarantee accuracy of any description, dimension, condition or any required permission for occupation and use. It is not company policy to test any services or appliances in properties offered for sale and these should be verified by the purchaser's solicitors. James Pyle Holdings Ltd will not be liable for any loss arising from the use of these details. No responsibility is taken for any errors, omissions or misstatements within these particulars. It should not be assumed that the property has all the necessary planning, building regulation or other consents. These particulars do not form any part of any offer or contract and must not be relied upon as statements or representations of fact. James Pyle & Co is a trading name of James Pyle Holdings Ltd, registered in England & Wales. Registered number 10927906

COTSWOLD & COUNTY (HEAD OFFICE)

The Barn, Swan Barton, Sherston SN16 0LJ

01666 840 886 or 01452 812 054

LONDON (ASSOCIATE OFFICE)

121 Park Lane, Mayfair W1k 7AG

0207 0791 577