



OVER 60?

Secure this property
for up to **59% less!**

Price

£550,000

Freehold

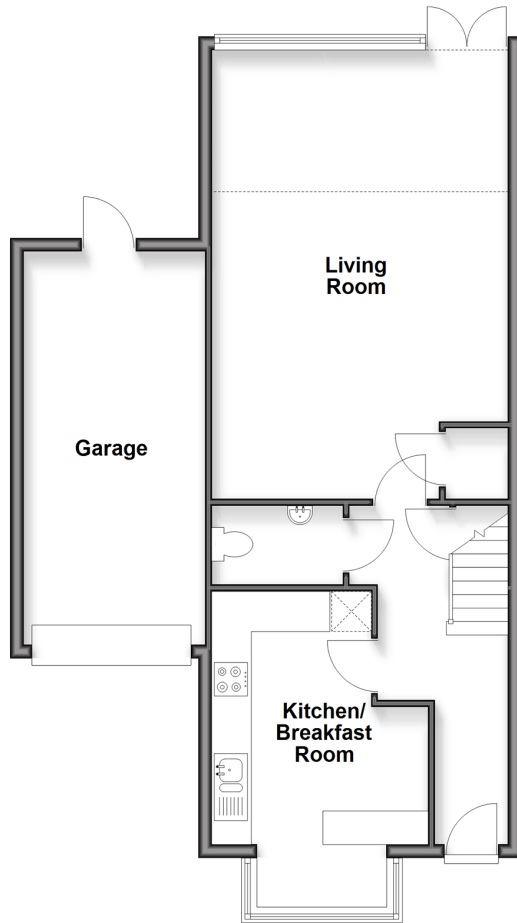
4x  2x  1x 

**Goodworth Road,
Redhill, Surrey, RH1**

cubitt&west
Helping you move forwards

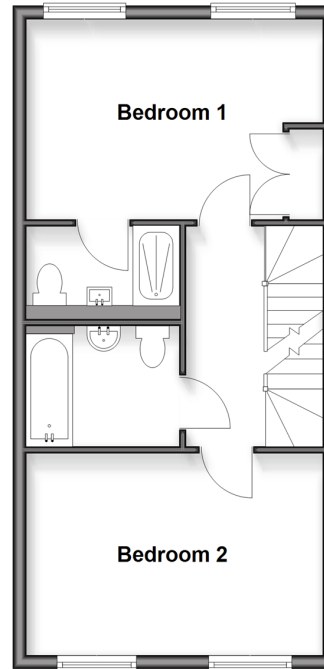
Ground Floor

Approx. 70.3 sq. metres (756.2 sq. feet)



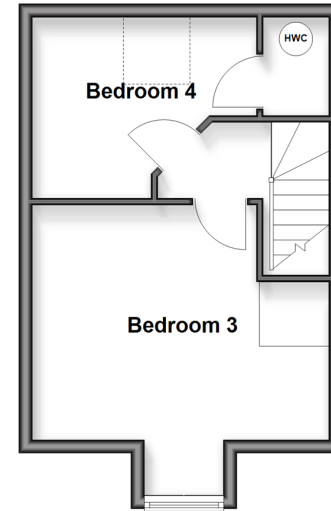
First Floor

Approx. 42.3 sq. metres (454.9 sq. feet)



Second Floor

Approx. 29.1 sq. metres (312.9 sq. feet)



Accommodation

GROUND FLOOR

Entrance Hall

Kitchen/Breakfast Room: 15'7 x 10'8 (4.75m x 3.25m)

Living Room: 20'11 x 14'8 (6.38m x 4.47m)

Cloakroom

FIRST FLOOR

Landing

Bedroom 1: 14'8 x 10'7 (4.47m x 3.23m)

En Suite Shower Room

Bathroom

Bedroom 2: 14'8 x 10'4 (4.47m x 3.15m)

SECOND FLOOR

Landing

Bedroom 3: 14'9 x 14'3 (4.50m x 4.35m)

Bedroom 4: 11'2 x 8'11 (3.41m x 2.72m)

OUTSIDE

Garage: 19'7 x 9'0 (5.97m x 2.75m)

Rear Garden

Driveway



Main features

- No onward chain
- Garage and driveway parking
- Split across three floors with multiple receptions
- Sought after location on popular 'Park 25' development
- Maintained communal grounds with private residential park
- Short walk to Redhill Train Station and High Street



Nearest Schools

Primary Schools: Furze Field Primary 1.5 miles, Nutfield Church CofE Primary 1.5 miles, St Joseph's Catholic Primary, Redhill 1.7 miles
Secondary Schools: The Warwick School 0.7 miles, St Bede's School 1.9 miles, Reigate School 2.0 miles



Transport Information

Train Stations: Redhill 1.0 miles, Earlswood 1.9 miles, Reigate 2.0 miles



Address

Goodworth Road, Redhill, Surrey, RH1



Directions

For directions to this property please contact us.



cubitt&west
Helping you move forwards

Call Redhill Branch 01737 778866 ■ cubittandwest.co.uk



- Legal advice should be taken to verify fixtures/fittings, planning, alterations and/or lease details
- Appliances & services are untested, dimensions are approximate and floor plans are not to scale
- Through a Homewise Home For Life Plan people aged 60+ can secure this property for up to 50% less, by purchasing a Lifetime Lease.



23411029/20251122/AB/KH