



Matthias Road, N16

£650,000

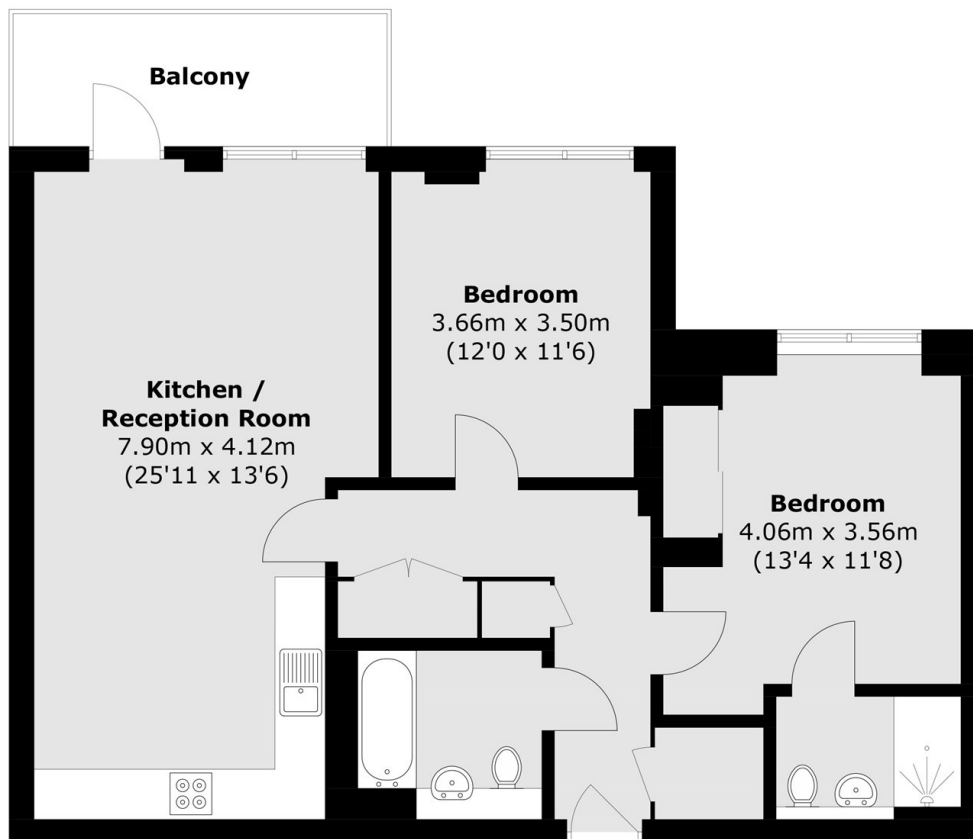
A beautifully maintained two-bedroom, two-bathroom third-floor apartment. The property features a bright and spacious open-plan reception and kitchen area with access to a private balcony. Both bedrooms are well proportioned, with the principal bedroom benefiting from an en suite bathroom. Additional features include a communal rear patio, secure bike storage, video-entry system, and lift access to all floors.

Walrond House is located on Matthias Road, only moments from the many bars, restaurants and coffee houses of Dalston, Newington Green and Stoke Newington Church Street. Transport links include, Canonbury station (overground), Dalston Kingsland & Junction Stations (overground) and a wide variety of bus routes into The City and West End.

Features

- Two Double Bedrooms
- Two Bathrooms
- Open Plan
- Private Balcony
- Lift Access
- Secure Bike Storage

Matthias Road, London, N16



Total area (approx.): 78.1 sq. m (840.7 sq. ft)
Balcony: 7.1 sq. m (76.4 sq. ft)