

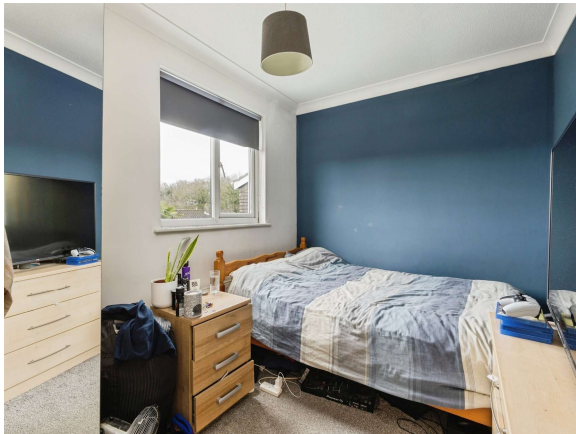


Ashleigh Gardens, Wymondham NR18 0EX

welcome to

Ashleigh Gardens, Wymondham

A bright and practical three-bedroom home featuring living room, a kitchen/diner, and a conservatory leading to an enclosed rear garden. With two double bedrooms, a single room, a family bathroom, and a downstairs cloakroom, it offers comfortable everyday living.



Description

This well-presented three-bedroom home offers generous living space, thoughtful layout, and excellent potential for families or first-time buyers. The ground floor features an inviting living room that flows seamlessly into the kitchen/diner. A conservatory extends the living space further, opening directly onto the rear garden and providing an ideal spot for relaxing or entertaining.

Upstairs, the property offers two spacious double bedrooms and a well-proportioned single room, all benefiting from plenty of built-in storage. A modern family bathroom serves the first floor, and a convenient downstairs cloakroom.

The enclosed rear garden is a real highlight, offering a mix of shingle and patio areas perfect for outdoor dining and low-maintenance planting. To the front, the garden features a shingled area and a dropped kerb, offering potential for off-road parking.

Living Room

Front facing window, stair leading to first floor with additional storage complete with laminate flooring and door leading to the porch area

Cloakroom

Sink and W.C

Kitchen/Diner

Open plan area space for a dining table, built in oven, hob with extractor fan with plenty of wall and base level units and space for white goods

Conservatory

Wrap around windows with french doors leading to the rear garden, space for dining table as well as fixtures and fittings

Bedroom One

Double room with front facing window complete with built in wardrobes

Bedroom Two

Double bedroom with rear facing window

Bedroom Three

Single room with front facing window

Bathroom

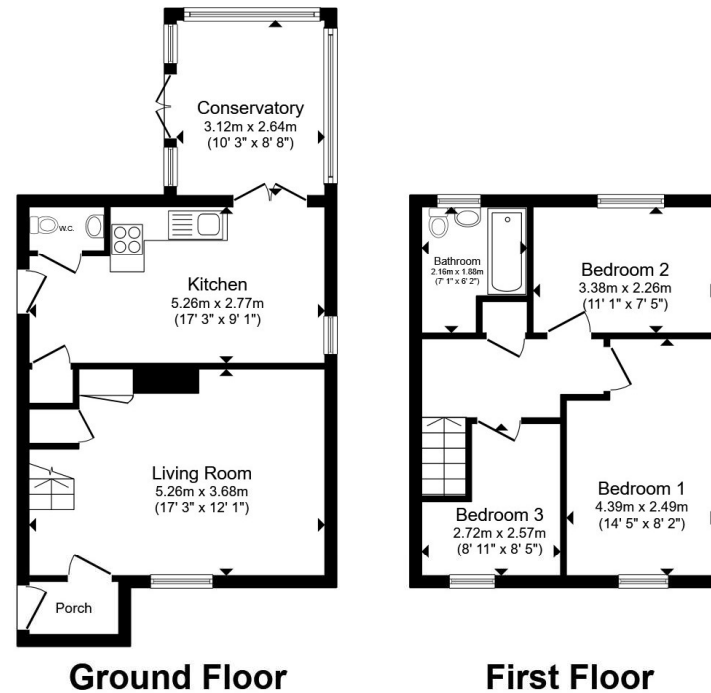
Complete with bath, sink and W.C

Rear Garden

Shingle area low maintenance with patio area used for dining with space for a shed

Front Garden

Shingle area low maintenance



Ground Floor

First Floor

Total floor area 79.6 m² (857 sq.ft.) approx

This floor plan is for illustrative purposes only. It is not drawn to scale. Any measurements, floor areas (including any total floor area), openings and orientation are approximate. No details are guaranteed, they cannot be relied upon for any purpose and they do not form part of any agreement. No liability is taken for any error, omission or misstatement. A party must rely upon its own inspection(s). Powered by www.propertybox.io



welcome to

Ashleigh Gardens, Wymondham

- Three Bedroom
- Enclosed Rear Garden
- Garage
- Conservatory
- Ample Built-in Storage
- Family Bathroom & Cloakroom

Tenure: Freehold EPC Rating: E Council Tax Band: C

£265,000



Please note the marker reflects the postcode not the actual property

view this property online williamhbrown.co.uk/Property/WYM109027



Property Ref:
WYM109027 - 0005

1. MONEY LAUNDERING REGULATIONS Intending purchasers will be asked to produce identification documentation at a later stage and we would ask for your co-operation in order that there is no delay in agreeing the sale. 2. These particulars do not constitute part or all of an offer or contract. 3. The measurements indicated are supplied for guidance only and as such must be considered incorrect. Potential buyers are advised to recheck measurements before committing to any expense. 4. We have not tested any apparatus, equipment, fixtures or services and it is in the buyers interest to check the working condition of any appliances. 5. Where an EPC, or a Home Report (Scotland only) is held for this property, it is available for inspection at the branch by appointment. If you require a printed version of a Home Report, you will need to pay a reasonable production charge reflecting printing and other costs. 6. We are not able to offer an opinion either written or verbal on the content of these reports and this must be obtained from your legal representative. 7. Whilst we take care in preparing these reports, a buyer should ensure that his/her legal representative confirms as soon as possible all matters relating to title including the extent and boundaries of the property and other important matters before exchange of contracts.

William H Brown Corp is a trading name of Sequence (UK) Limited which is registered in England and Wales under company number 4268443, Registered Office is Cumbria House, 16-20 Hockliffe Street, Leighton Buzzard, Bedfordshire, LU7 1GN. VAT Registration Number is 500 2481 05.

 **william h brown**
Incorporating
**Porter
Glenny**



01953 602578



Wymondham@williamhbrown.co.uk



27 Market Street, WYMONDHAM, Norfolk,
NR18 0AJ



williamhbrown.co.uk