



Greenwich Park Street, SE10

£850,000

**Dexters**



## Greenwich Park Street, SE10

A beautifully presented three bedroom period home in a sought after location which has been finished to a phenomenal standard. Upon entering the ground floor, you are welcomed into a cosy reception area with a fireplace, flowing into an open-plan kitchen and dining space with a utility area with patio doors opening onto the garden. The first floor offers two bedrooms and a family bathroom, while the top floor hosts a bright and airy master bedroom.

Greenwich Park Street is a residential street located a short walk from Maze Hill Mainline Station providing direct links to London Bridge, Cannon Street and St Pancras. Greenwich Park is located nearby as are the many historical attractions of Greenwich including the National Maritime Museum, Royal Observatory and the Royal Naval College. For further transport connections, Cutty Sark DLR Station is also within walking distance, offering fast links to Canary Wharf and the City. There are an array of local shops, restaurants and cafés along Trafalgar Road for residents to enjoy, while larger supermarkets are also within easy reach. A number of popular nurseries and schools for families are also in the local vicinity.

### Features

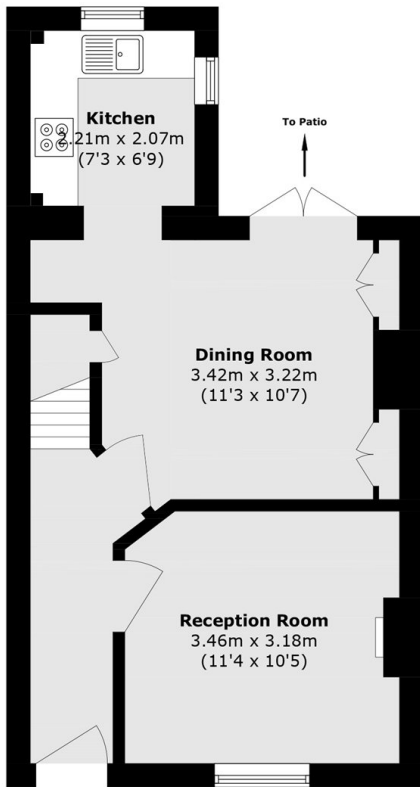
- Three Bedrooms
- Period Family Home
- Sought After Location
- Chain Free
- Finished To A High Standard
- No Work Required



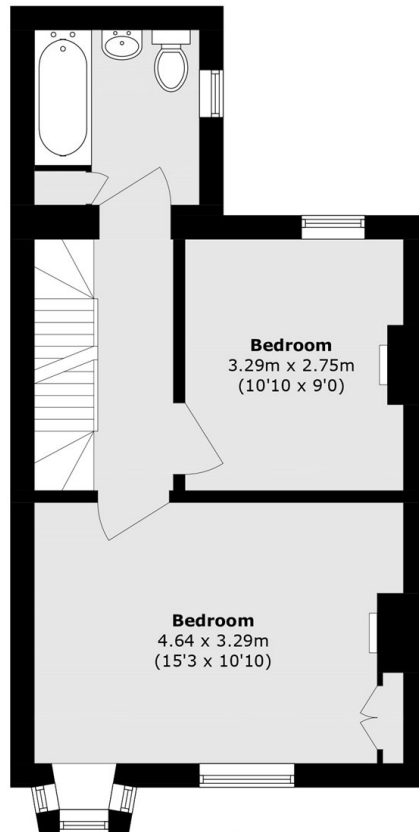




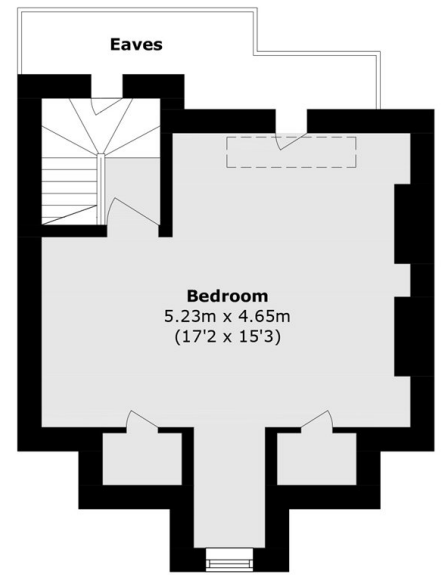
# Greenwich Park Street, London, SE10



**Ground Floor**



**First Floor**



**Second Floor**

Total area (approx.): 93.8 sq. m (1009.7 sq. ft)  
(Excluding Eaves)