



Sterling Gardens, SE14

£360,000

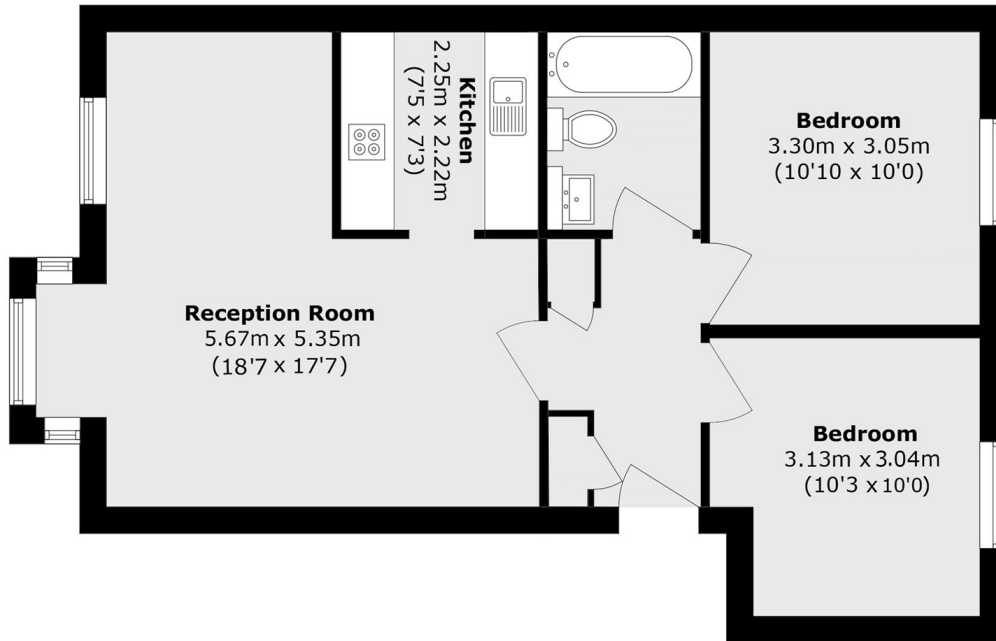
A well-presented two-bedroom property set within a sought-after development in New Cross Gate. The accommodation features two spacious bedrooms, a stylish open-plan kitchen and reception area, a bright contemporary bathroom, and built-in storage.

Located near New Cross Gate, New Cross, Surrey Quays, and Deptford (DLR and Overground), offering convenient access to Central London, Kent, and Croydon. A range of bus routes also provide additional connections.

Features

- Two Bedrooms
- Chain Free
- Large Reception Room
- Allocated Parking
- Top Floor
- Communal Gardens

Sterling Gardens, London, SE14



Total area (approx.): 56.9 sq. m (612.4 sq. ft)