



**Candle Street, E1**

**£300,000**

**Dexters**



## Candle Street, E1

A well-presented one bedroom apartment in a sought after development. The apartment benefits from a large, open plan living room with ample space to dine, this area leads out to the properties private balcony. The property also has a spacious double bedroom, an entrance hall with plenty of storage, a separate modern bathroom. The development also has an area for secure bike storage.

Ideally located equidistant from both Stepney Green (District, Hammersmith&City), Mile End (Central) and Limehouse for DLR, this location offers convenient access to transport links throughout the City. The local area provides a selection of cafés, bars and restaurants and the green spaces of Mile End Park and Victoria Park are nearby.

### Features

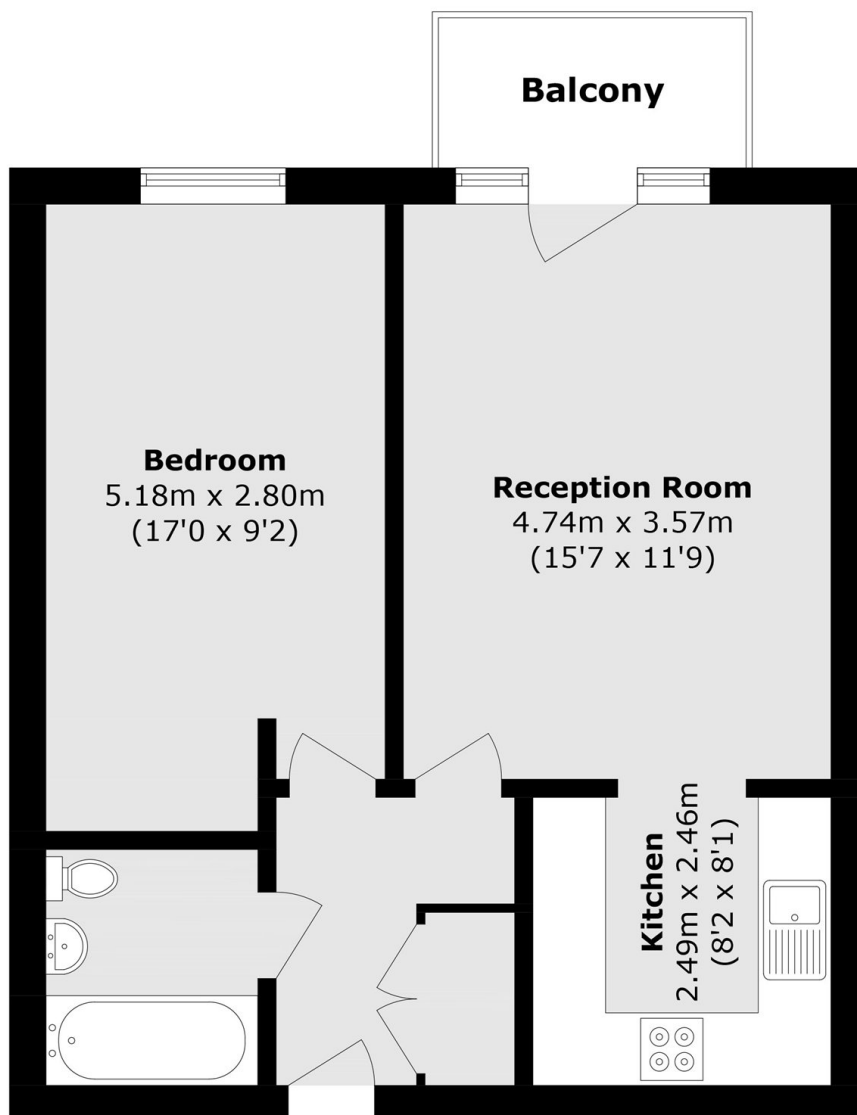
- One Double Bedroom
- Private Balcony
- Purpose Built
- Bright interiors
- Sought after development







# Candle Street, London, E1



Total area (approx.): 47.1 sq. m (506.9 sq. ft)  
Balcony area (approx.): 3.1 sq. m (33.3 sq. ft)