



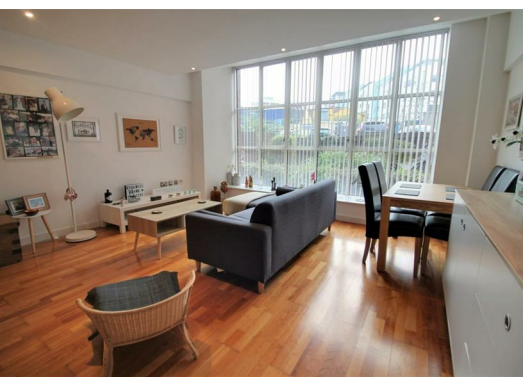
Apartment 8, 128 Morville Street, Birmingham, B16 8FJ Offers in excess of £125,000

Goodmove present this one bed apartment for sale on Morville Street, Birmingham, B16. Located close to local amenities and with Birmingham City Centre and M6 motorway links close by.

Located in Brindley Place, this centrally located apartment will definitely ensure that you can make the most of living in the heart of the city. The hardest decision will be to decide where to try first - but Ju Ju's Café, The Distillery and Siamais are some of our recommendations! If you need to commute for work, it really couldn't be easier here, with New Street Station and Moor Street Station both a 15 minute walk away and the Library Metro Tram Stop just a 10 minute walk away.

Plus when it comes to enjoying a spot of retail therapy, the Bullring Shopping Centre can be reached within 30 minutes on foot, and if you fancy hitting the cinema on a Friday or Saturday night, you'll also find a Cineworld round the corner on Broad Street.

Don't miss out on viewing this modern and stylish apartment for yourself! Book yours today by calling .



Disclaimer

- 1. MONEY LAUNDERING REGULATIONS:** Intending purchasers will be asked to produce identification documentation at a later stage and we would ask for your co-operation in order that there will be no delay in agreeing the sale.
- 2. General:** While we endeavour to make our sales particulars fair, accurate and reliable, they are only a general guide to the property and, accordingly, if there is any point which is of particular importance to you, please contact the office and we will be pleased to check the position for you, especially if you are contemplating travelling some distance to view the property.
- 3. Measurements:** These approximate room sizes are only intended as general guidance. You must verify the dimensions carefully before ordering carpets or any built-in furniture.
- 4. Services:** Please note we have not tested the services or any of the equipment or appliances in this property, accordingly we strongly advise prospective buyers to commission their own survey or service reports before finalising their offer to purchase.
- 5. THESE PARTICULARS ARE ISSUED IN GOOD FAITH BUT DO NOT CONSTITUTE REPRESENTATIONS OF FACT OR FORM PART OF ANY OFFER OR CONTRACT. THE MATTERS REFERRED TO IN THESE PARTICULARS SHOULD BE INDEPENDENTLY VERIFIED BY PROSPECTIVE BUYERS OR TENANTS. NEITHER GOODMOVE NOR ANY OF ITS EMPLOYEES OR AGENTS HAS ANY AUTHORITY TO MAKE OR GIVE ANY REPRESENTATION OR WARRANTY WHATSOEVER IN RELATION TO THIS PROPERTY.**

| Energy Efficiency Rating | | Current | Potential |
|---------------------------------------------|--|-------------------------|-----------|
| Very energy efficient - lower running costs | | | |
| (92 plus) A | | | |
| (81-91) B | | | |
| (69-80) C | | | |
| (55-68) D | | | |
| (39-54) E | | | |
| (21-38) F | | | |
| (1-20) G | | | |
| Not energy efficient - higher running costs | | | |
| England & Wales | | EU Directive 2002/91/EC | |

| Environmental Impact (CO ₂) Rating | | Current | Potential |
|-----------------------------------------------------------------|--|-------------------------|-----------|
| Very environmentally friendly - lower CO ₂ emissions | | | |
| (92 plus) A | | | |
| (81-91) B | | | |
| (69-80) C | | | |
| (55-68) D | | | |
| (39-54) E | | | |
| (21-38) F | | | |
| (1-20) G | | | |
| Not environmentally friendly - higher CO ₂ emissions | | | |
| England & Wales | | EU Directive 2002/91/EC | |

