



Living
made
better

Crown Court
Twickenham, TW1 3ES



£1,995 PCM

Crown Court, Twickenham, TW1 3ES

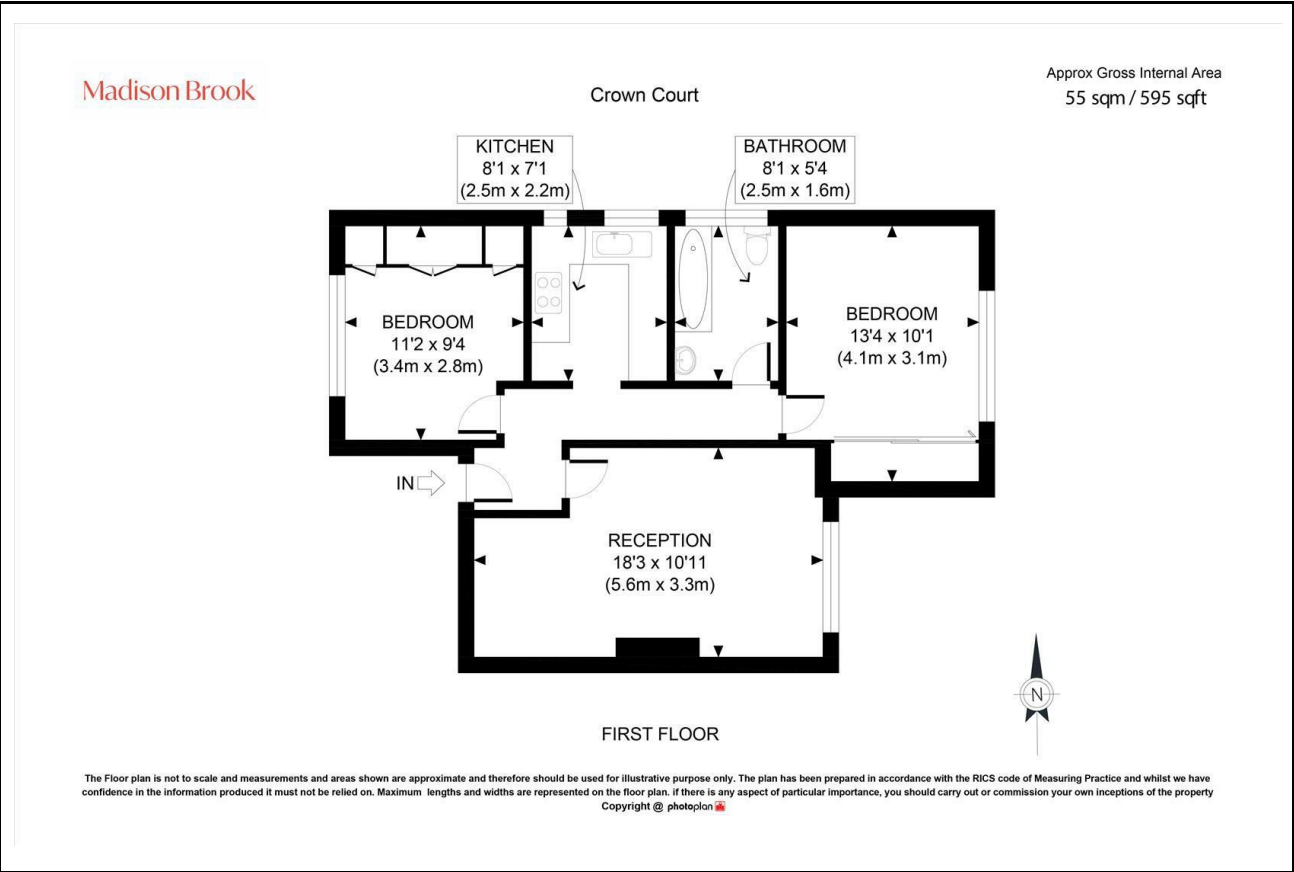
Madison Brook

Property Summary

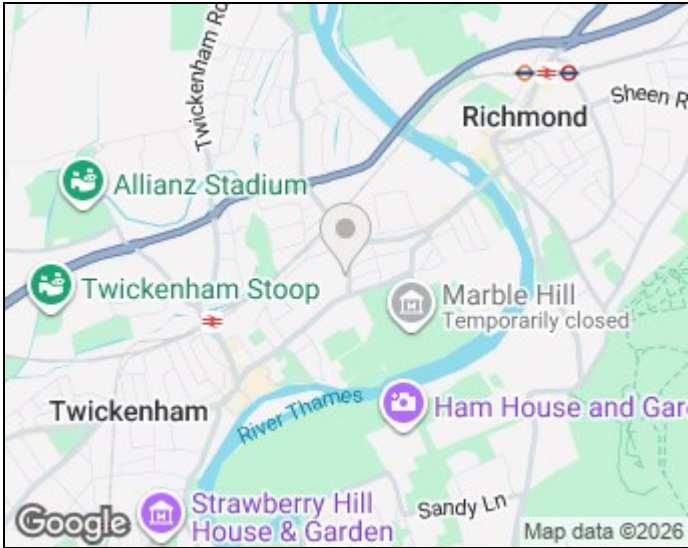
Located on the first floor of a low-rise, purpose-built block, this two-bedroom flat offers approximately 595 sq.ft. bright and well-proportioned internal living space. This property offers a generous reception room, separate fitted kitchen, two double bedrooms and a three-piece bathroom.

Residents benefit from a well-maintained landscaped communal gardens, unallocated residents' parking, and the proximity to the Train Station and Town Centre.

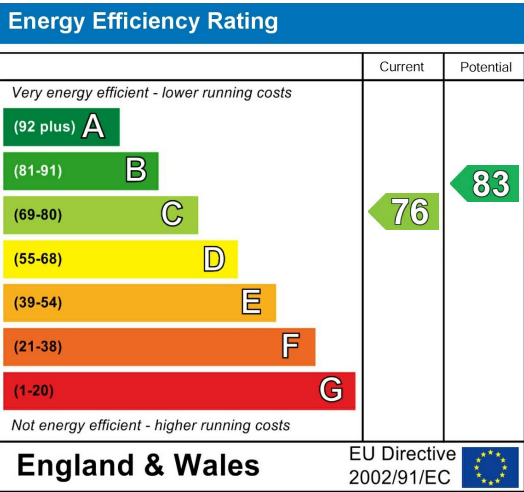
Floorplan



Area Map



Energy Efficiency Graph



These particulars, whilst believed to be accurate are set out as a general outline only for guidance and do not constitute any part of an offer or contract. Intending purchasers should not rely on them as statements of representation of fact, but must satisfy themselves by inspection or otherwise as to their accuracy. No person in this firm's employment has the authority to make or give any representation or warranty in respect of the property.

16 Church Street, Twickenham, TW1 3NJ
Tel: 020 3946 6400 Email:
twickenham@madisonbrook.com
<https://madisonbrook.com/>