



**Guide Price**  
**£180,000**

**Leasehold**

1x  1x  1x 

**Higham Avenue,  
Snodland, Kent, ME6**

**OVER 60?**

Secure this property  
for up to **59% less!**

*Wards*  
Helping you move forwards





## Main features

- Truly immaculate and spacious second floor apartment
- Excellent entertaining space in the lounge/diner
- Handy garage to use as you wish
- Extremely light and airy throughout
- Enjoy a glass of something in the evenings on the lovely balcony

## Accommodation

### SECOND FLOOR

Entrance Hall

Kitchen: 7'9 x 7'3 (2.36m x 2.21m)

Lounge/Diner: 15'2 x 12'1 (4.63m x 3.69m)

Balcony

Bedroom: 15'5 x 8'10 (4.70m x 2.69m)

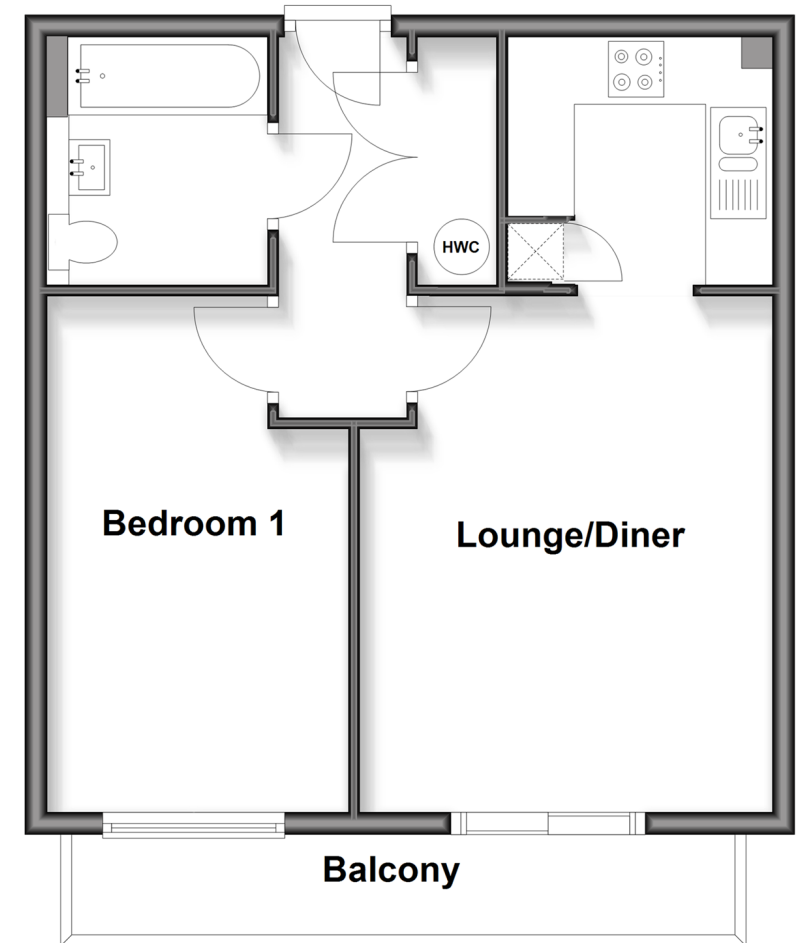
Bathroom

### OUTSIDE

Garage

## Second Floor

Approx. 45.6 sq. metres (490.5 sq. feet)



**Call Snodland - 01634 245055 ■ [wardsofkent.co.uk](http://wardsofkent.co.uk)**

- Legal advice should be taken to verify fixtures/fittings, planning, alterations and/or lease details
- Appliances & services are untested, dimensions are approximate and floor plans are not to scale
- Through a Homewise Home For Life Plan people aged 60+ can secure this property for up to 50% less, by purchasing a Lifetime Lease



13821861/20251218/MM/LK